




## INCHES

SIZE in	Bust	Waist	Hip
XS	34.3	26.4	36.2
S	36.2	28.3	38.2
M	38.2	30.3	40.2
L	40.2	32.3	42.1
XL	42.1	34.3	44.1
XXL	44.1	36.2	46.1
XXXL	46.1	38.2	48

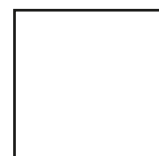
## CENTIMETERS

SIZE cm	Bust	Waist	Hip
XS	87	67	92
S	92	72	97
M	97	77	102
L	102	82	107
XL	107	87	112
XXL	112	92	117
XXXL	117	97	122

Print this page, the square must be exactly 2 cm x 2 cm  0 Cm 2 Cm  
 If it is, proceed to print the patterns.

The printer "actual size" option must be enabled and all resize or adjust option disabled.

**PRINT IN A4**



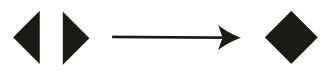
# PATTERN ASSEMBLY INSTRUCTIONS

## 1

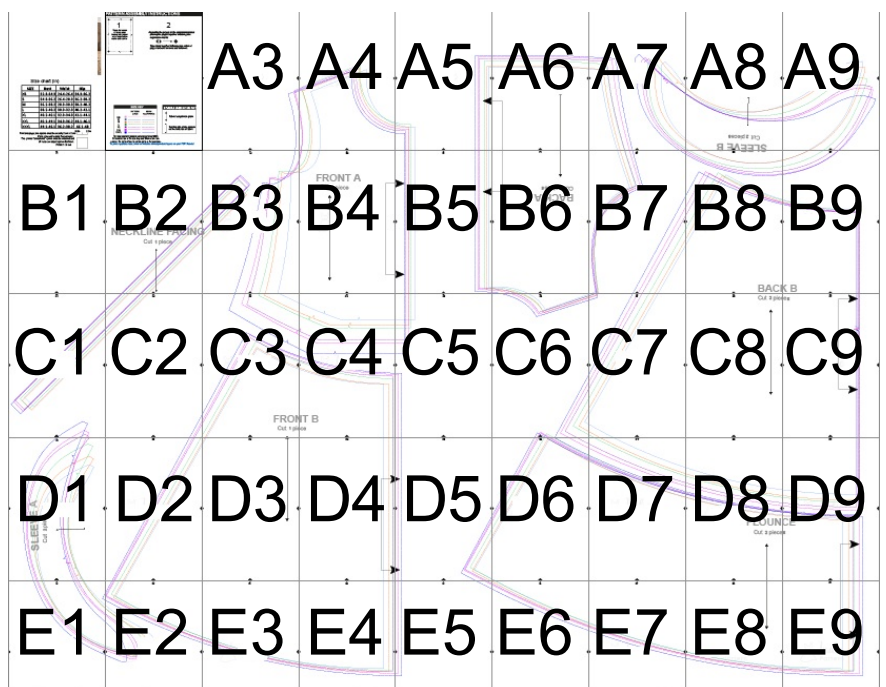
Trace the border of every page joining the corners of the registration marks and cut it off.

## 2

Assembly the pages as the diagram indicates placing the pages together matching the registration marks

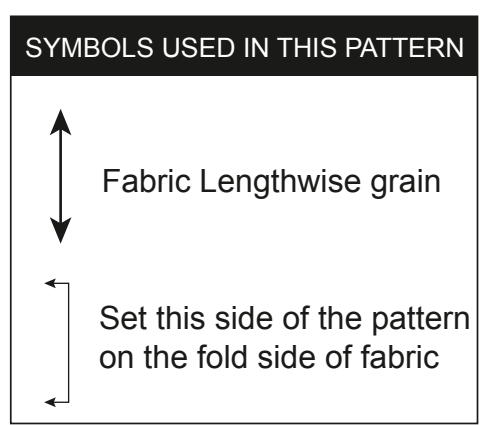


Tape them together following the order of page numbers for rows and columns.

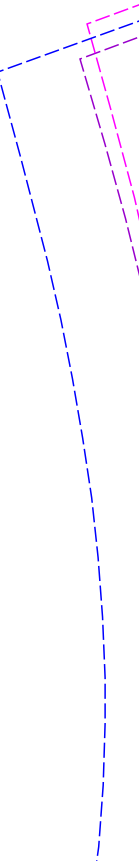


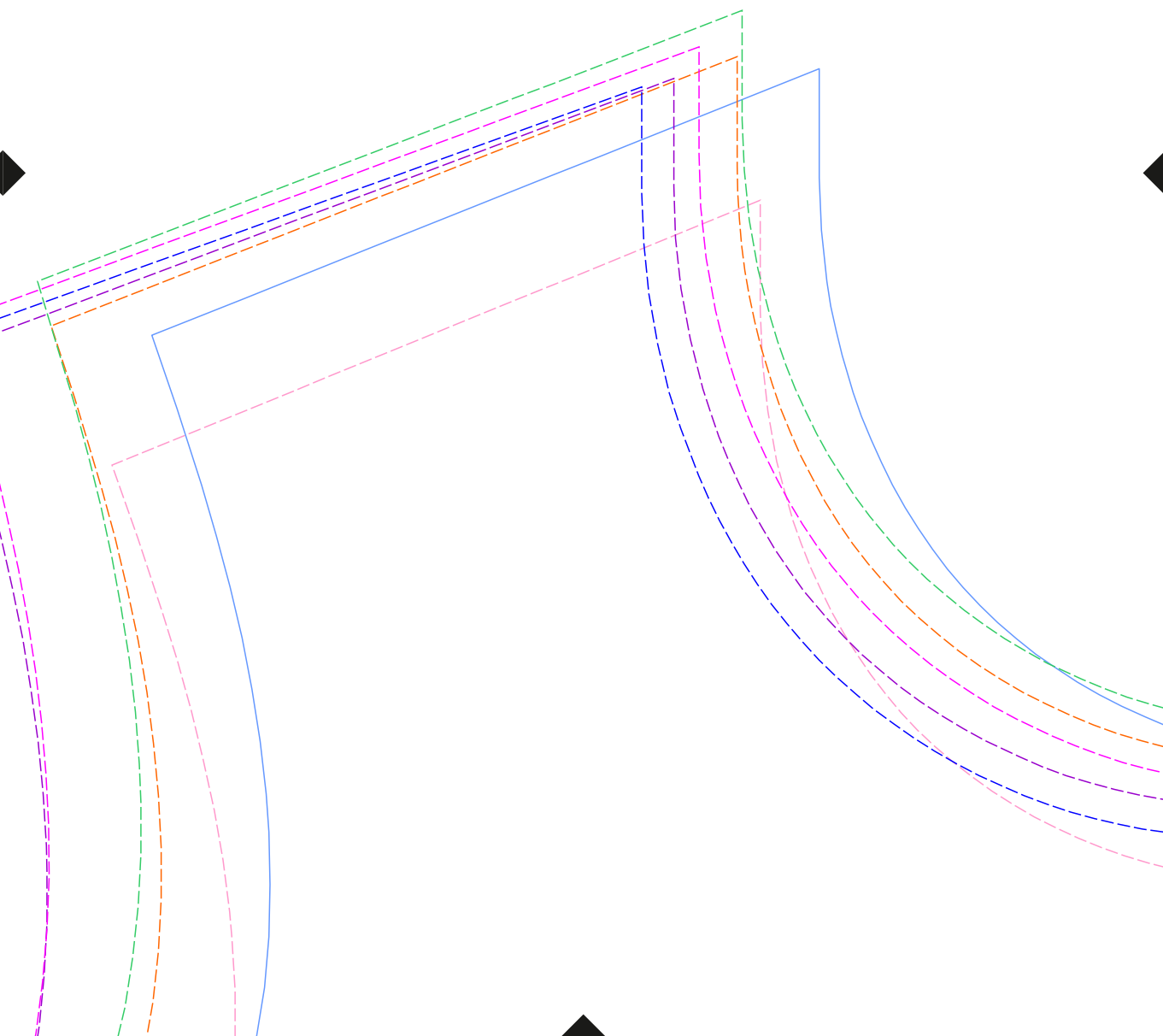
SIZE KEY		
XS	<span style="color: pink;">■</span>	—————
S	<span style="color: blue;">■</span>	—————
M	<span style="color: orange;">■</span>	—————
L	<span style="color: green;">■</span>	—————
XL	<span style="color: purple;">■</span>	—————
XXL	<span style="color: magenta;">■</span>	—————
XXXL	<span style="color: blue;">■</span>	—————

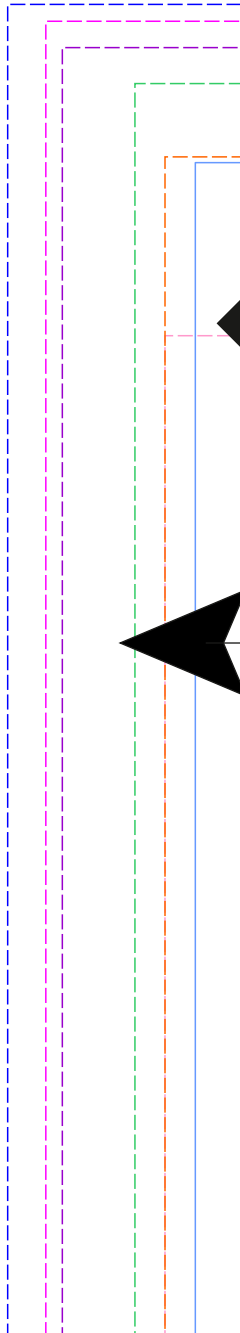
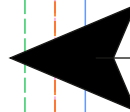
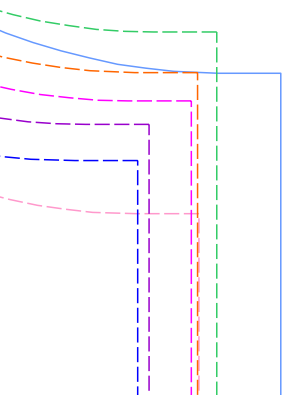
**Seam allowance: 1 cm / 0.4 inches**



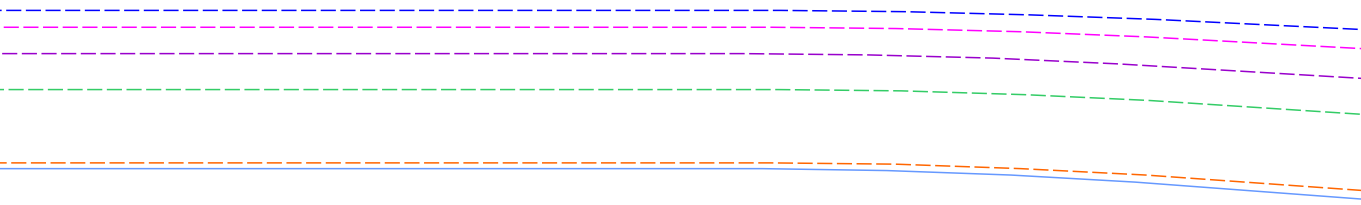
You can print this pattern either in color or B&W.  
 Select the size in the size key and follow either the color or the style of line to cut the pattern for your size.  
[To print separate sizes, show or hide the correspondent layers on your PDF Reader](#)

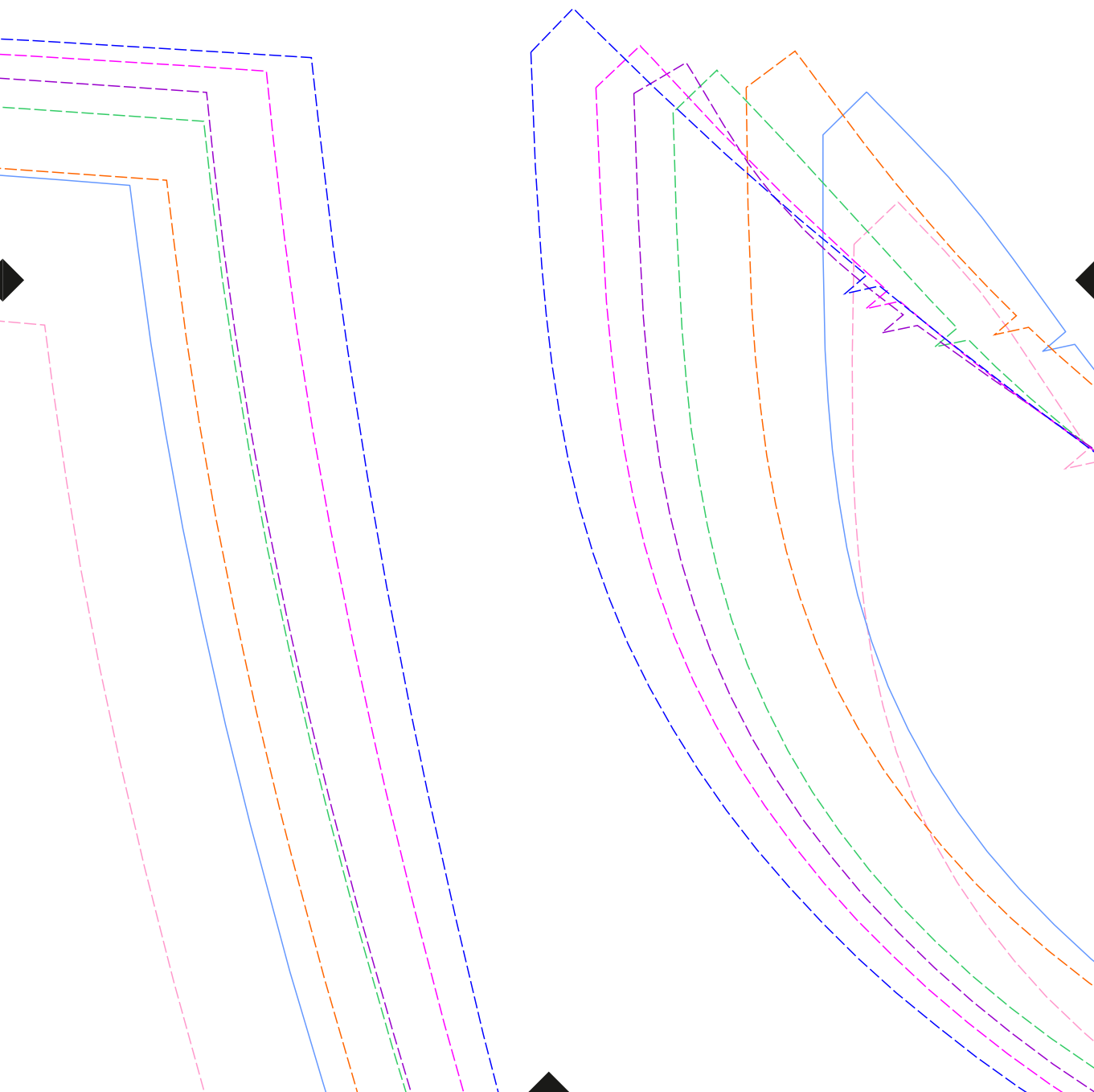


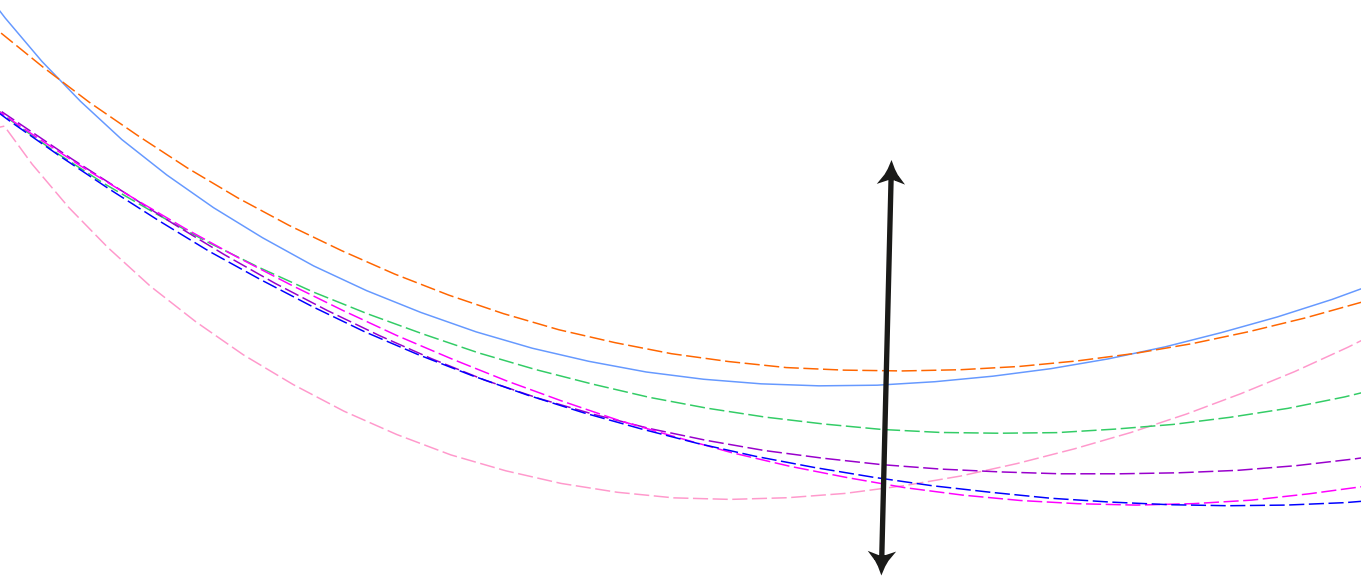




A6



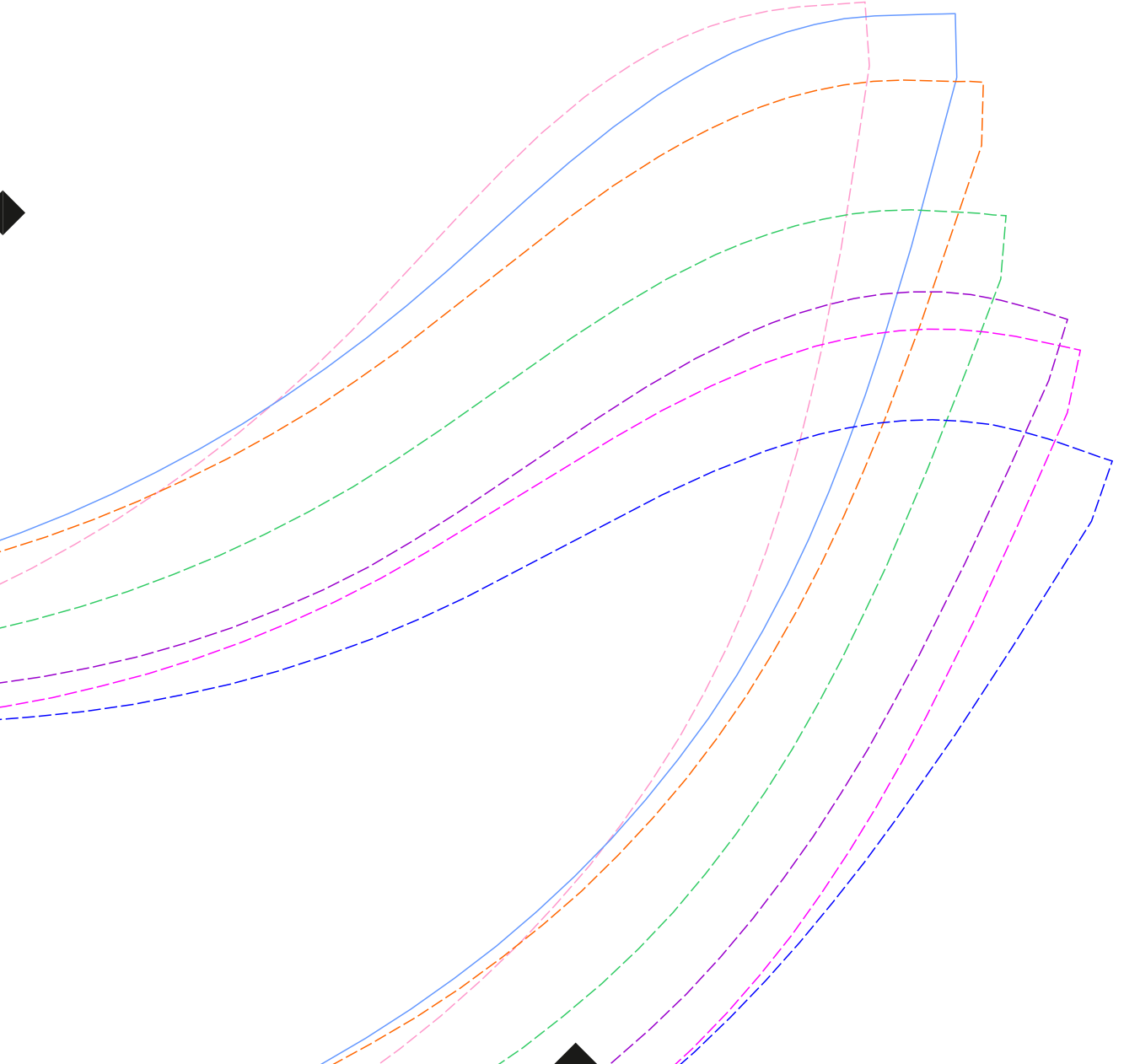




Cut 2 pieces

# SLEEVE B



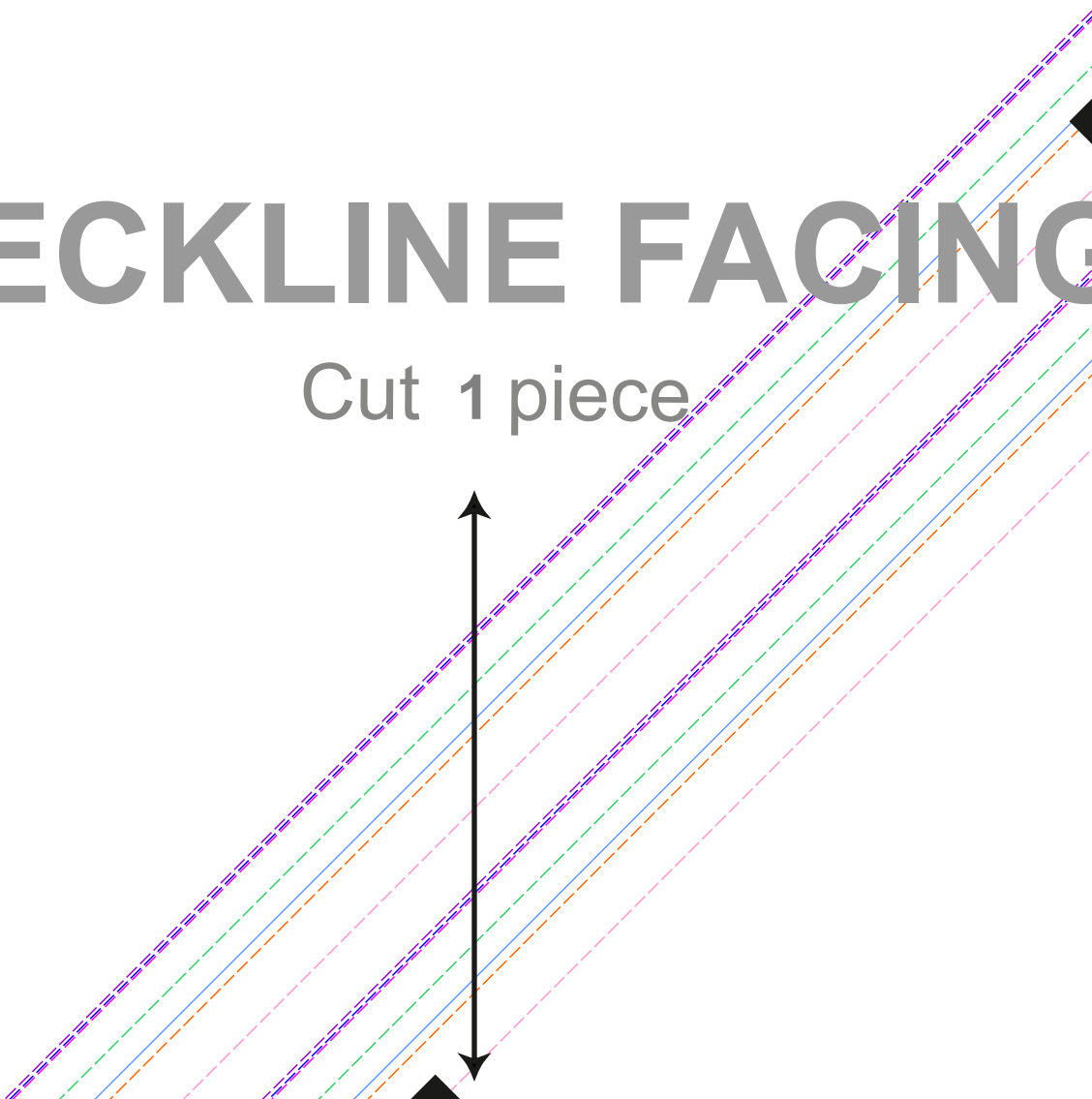




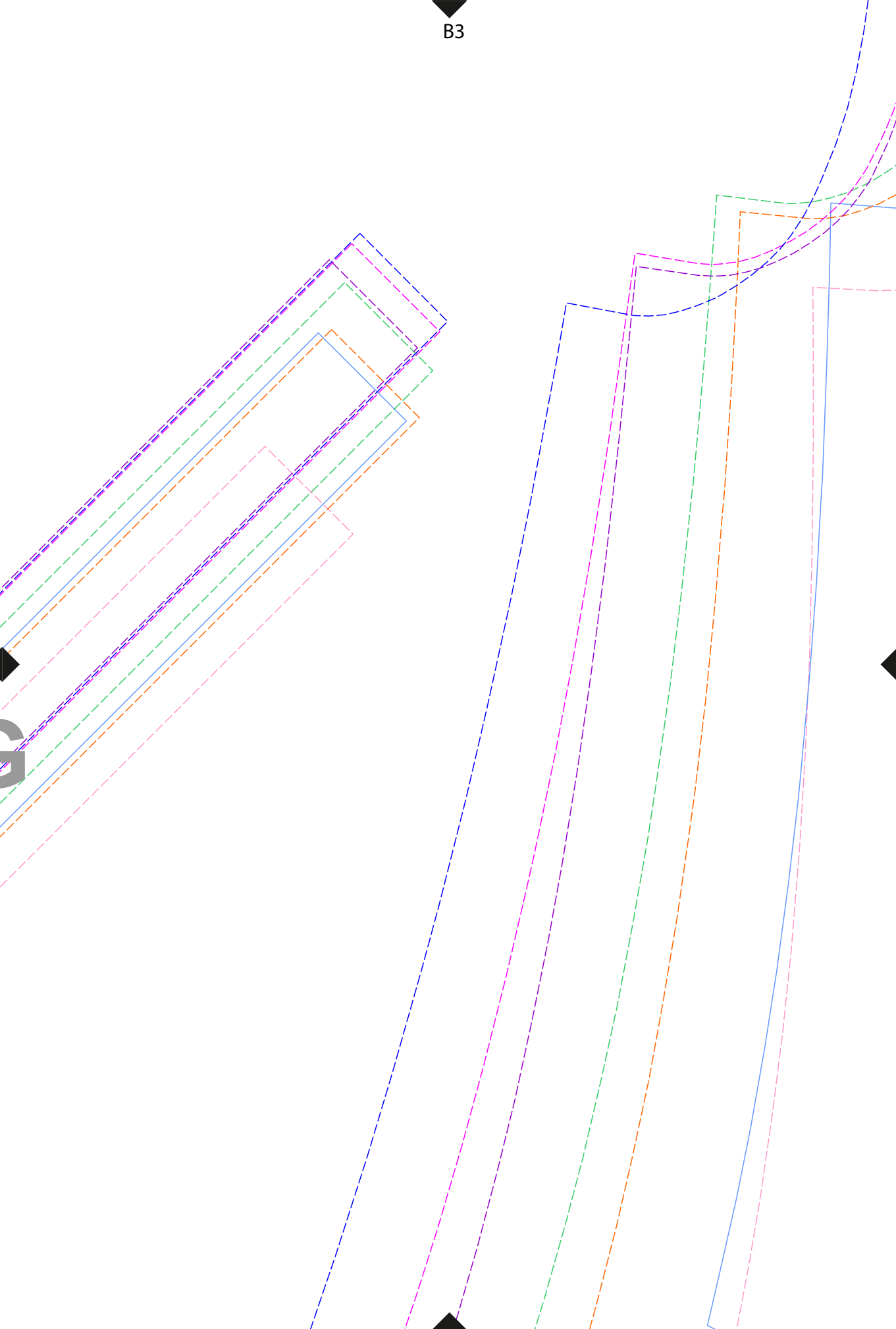
B2

# NECKLINE FACING

Cut 1 piece



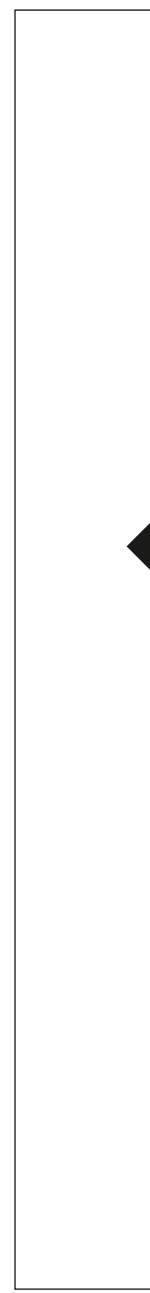
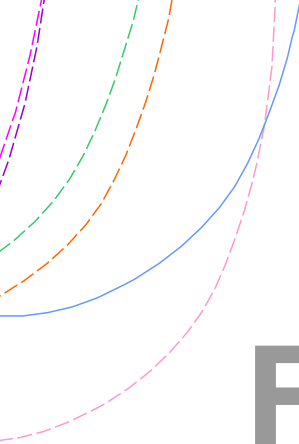
B3

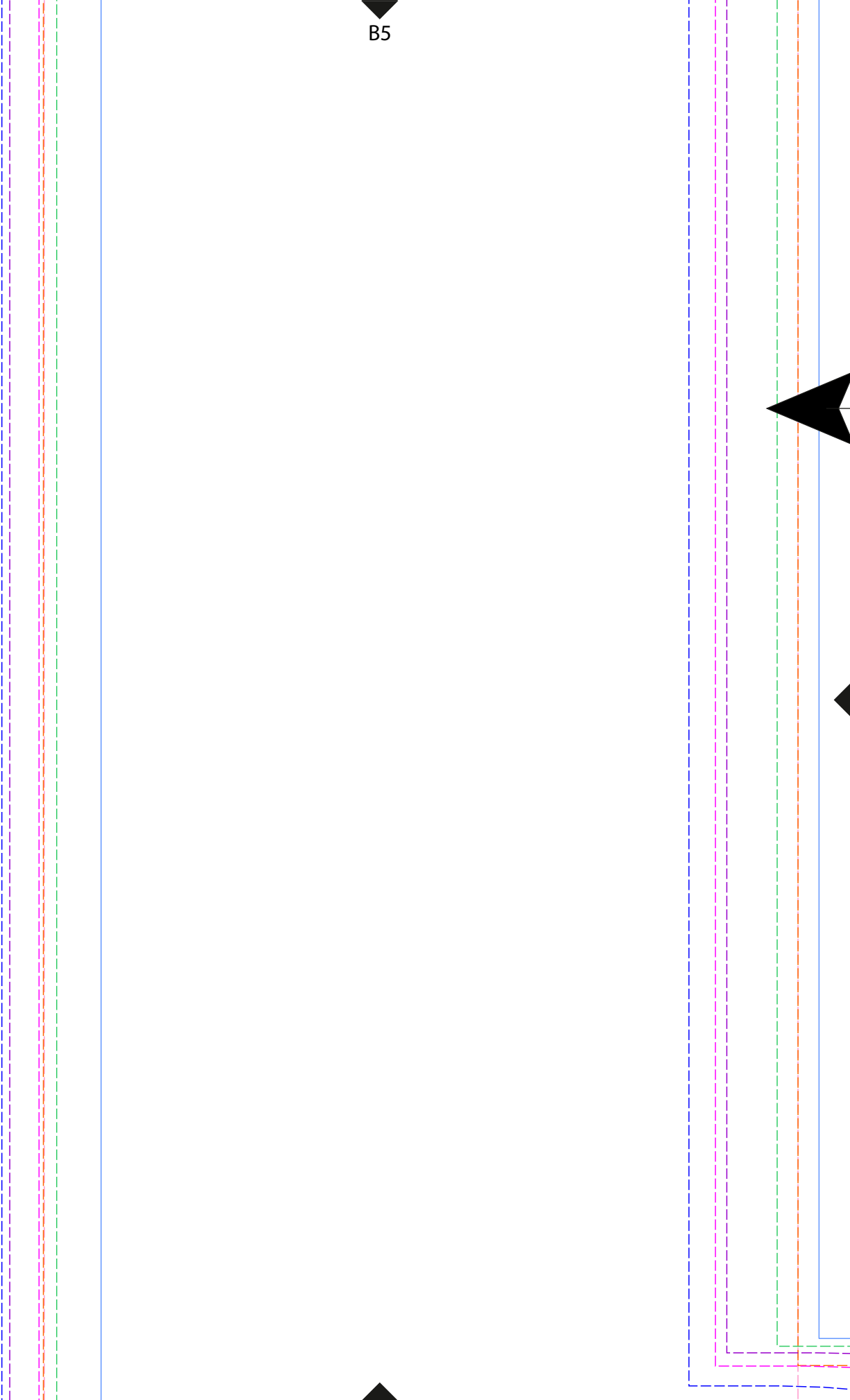
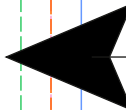
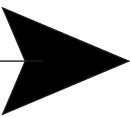
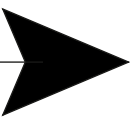


B4

# FRONT A

Cut 1 piece



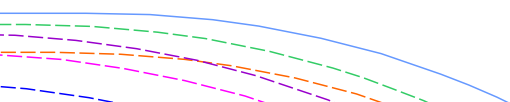


B6

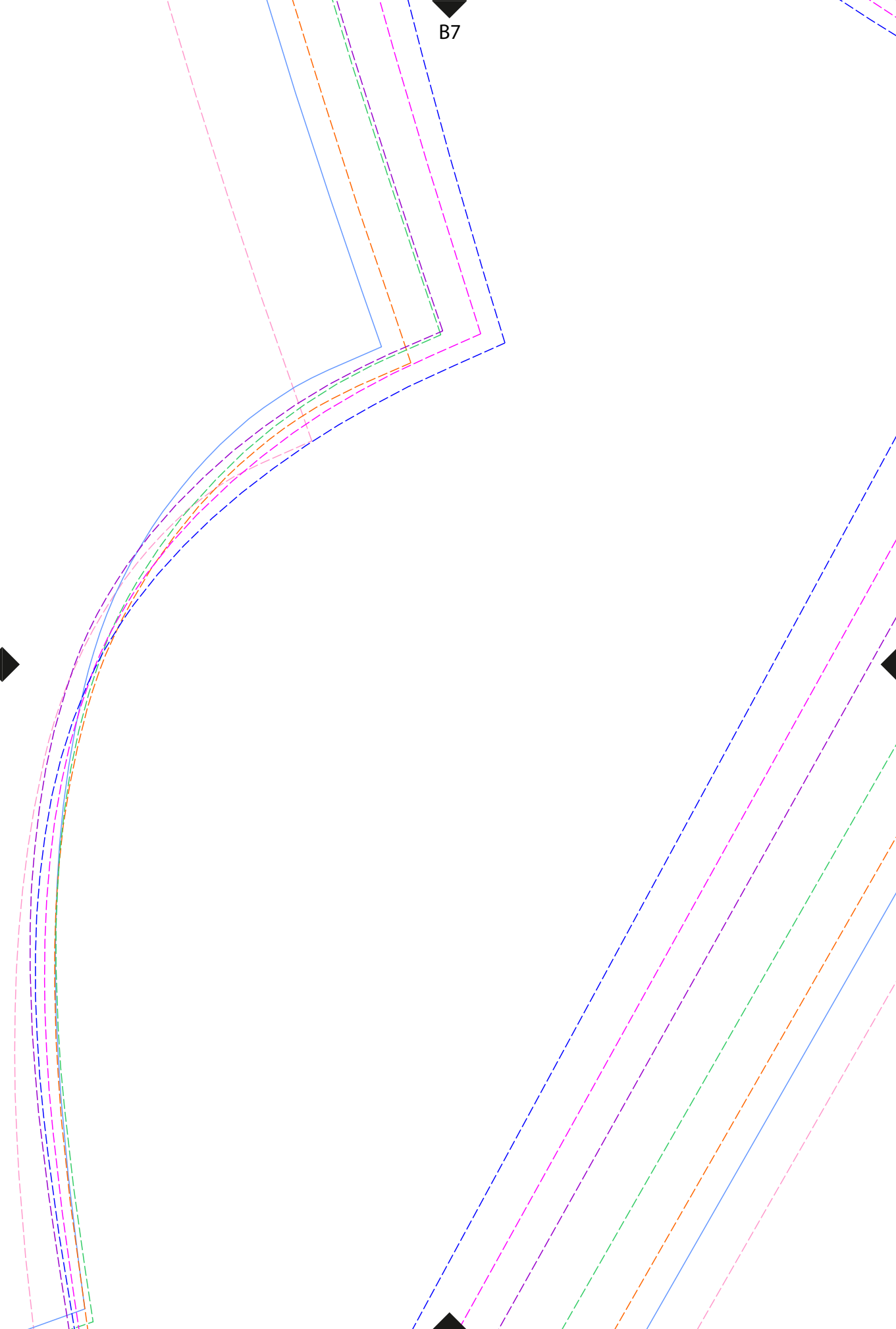


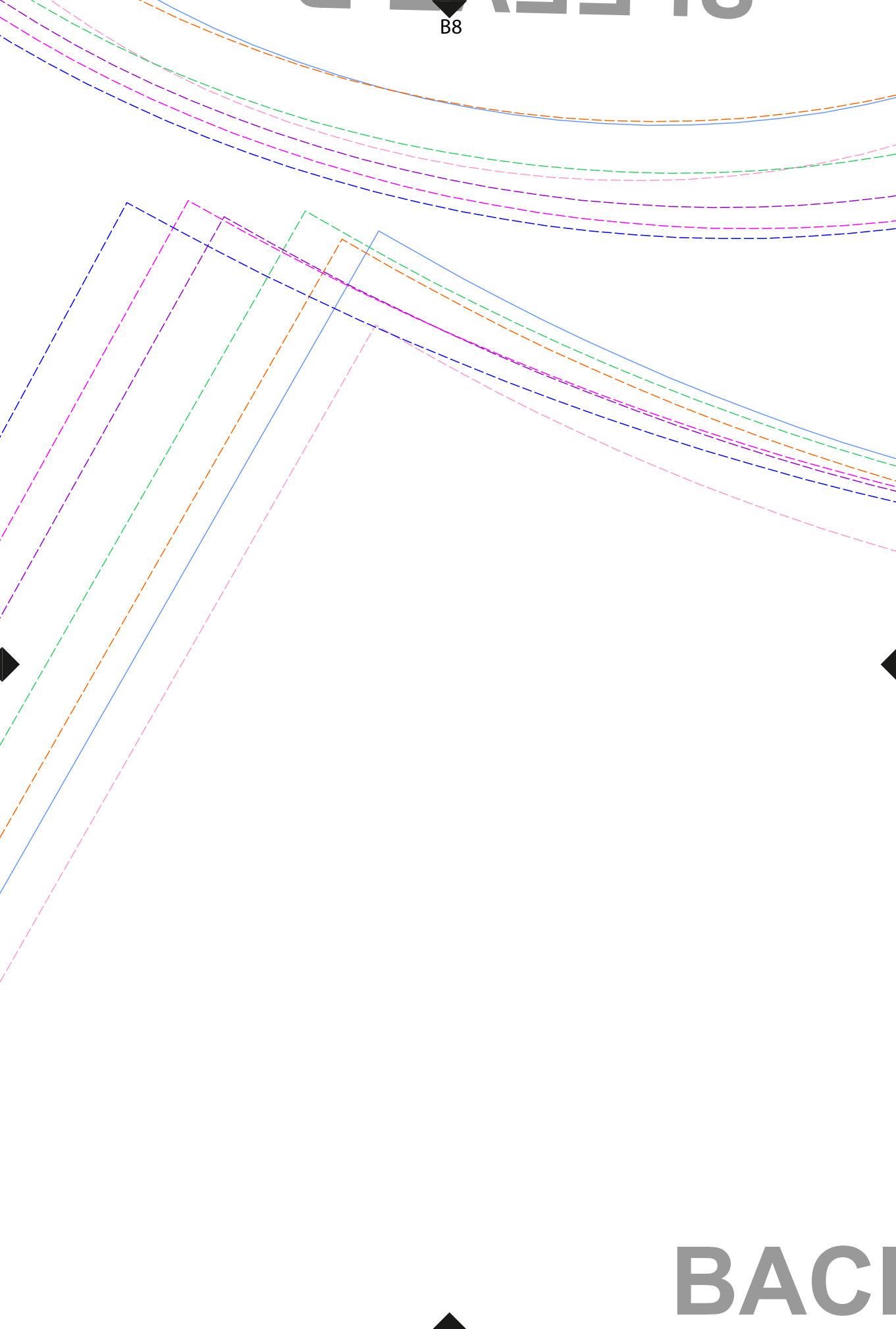
Cut 2 pieces

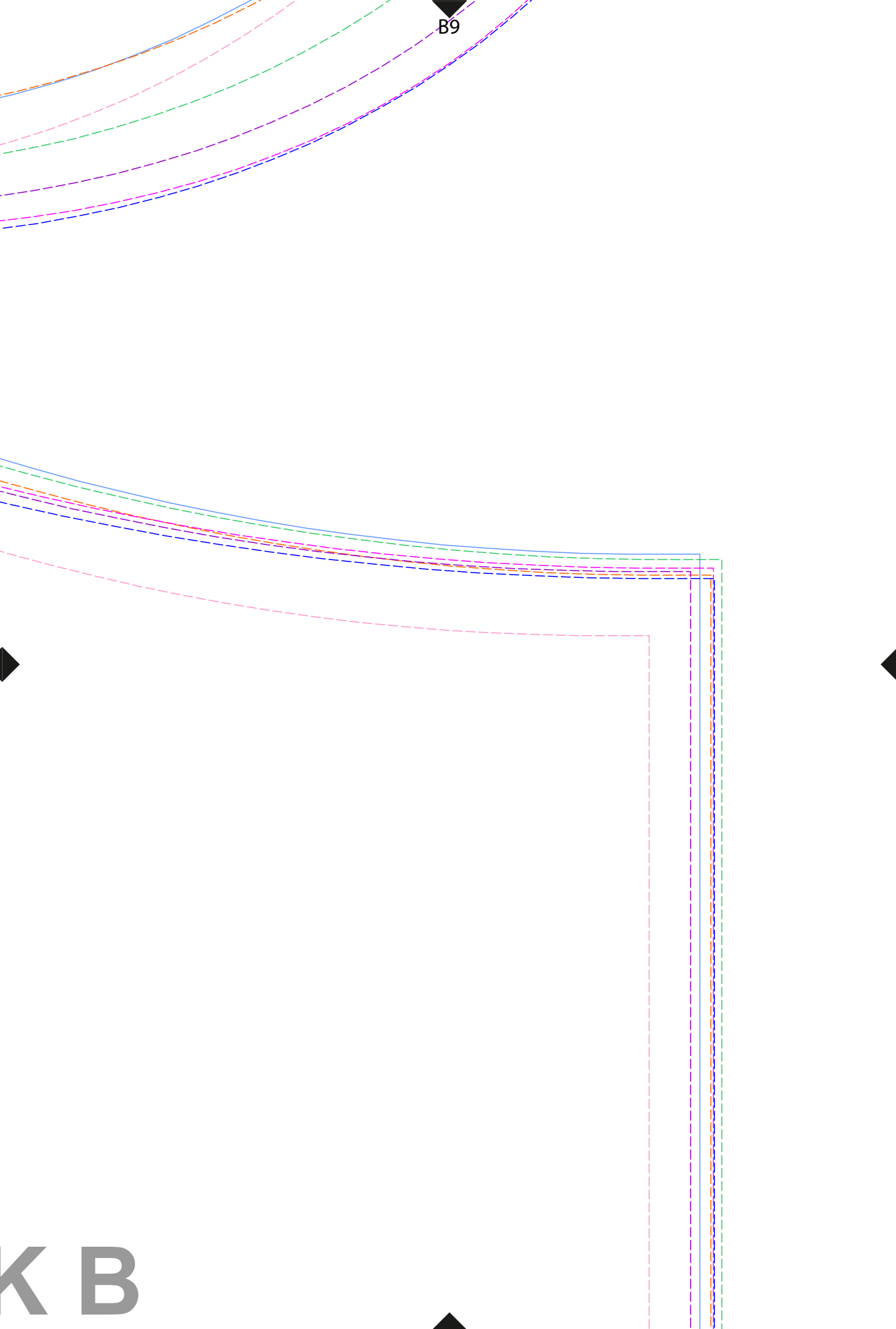
**BACK A**



B7



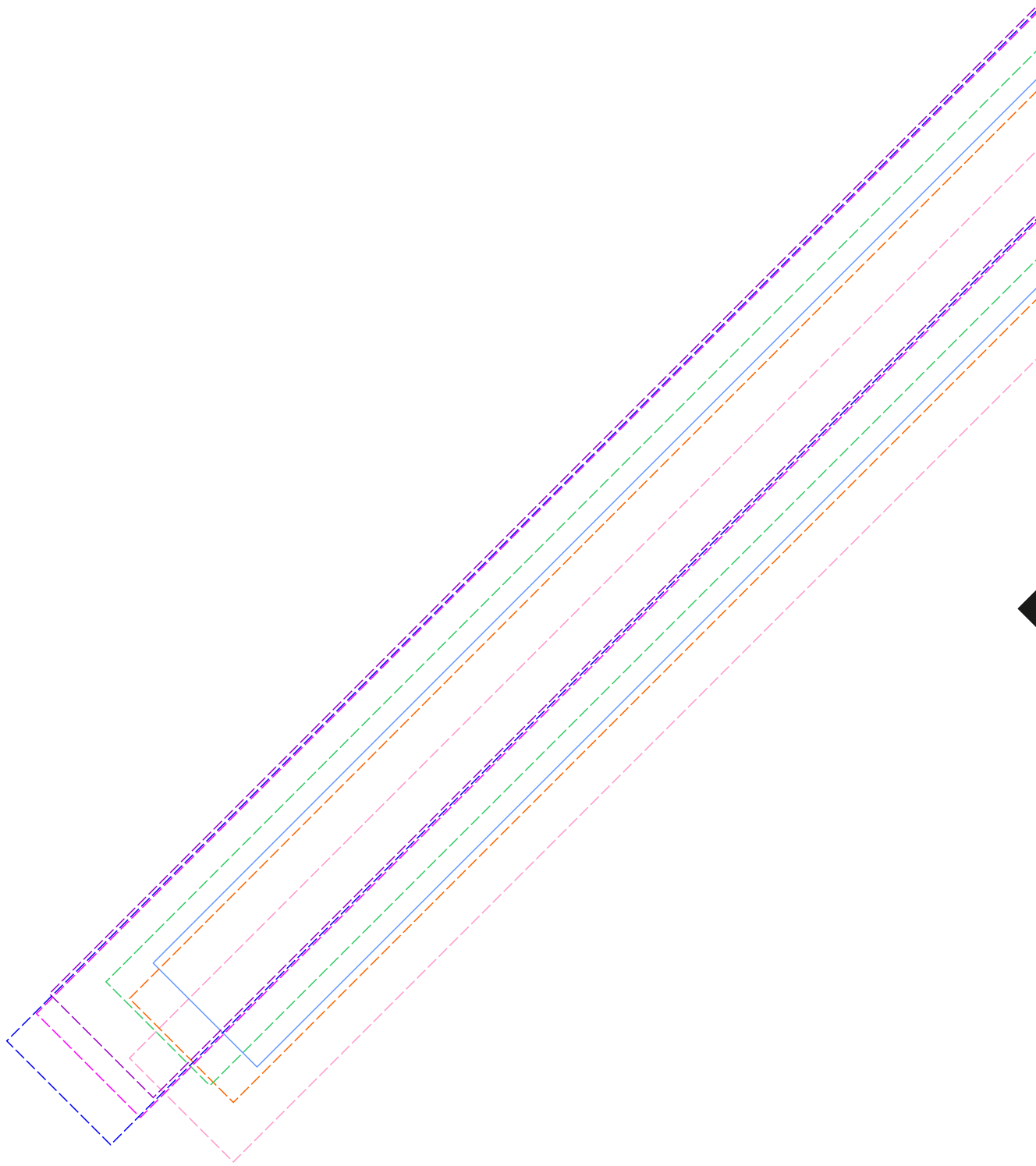


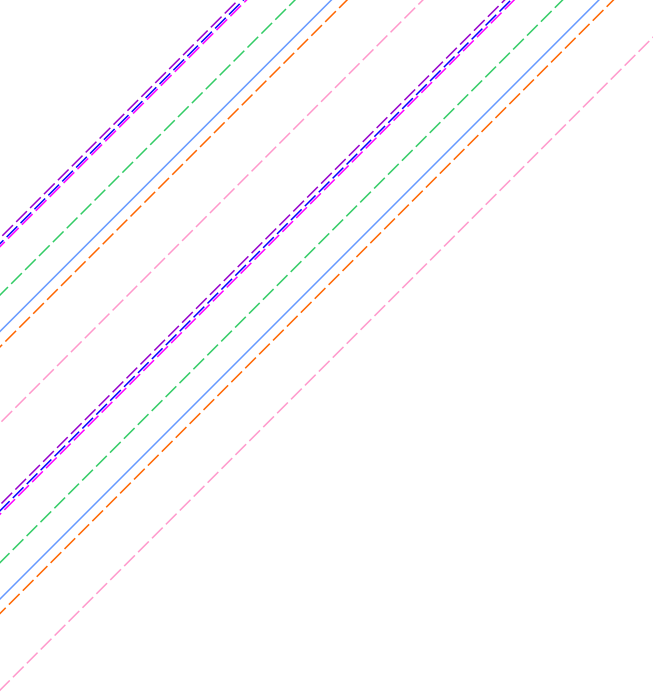


B9

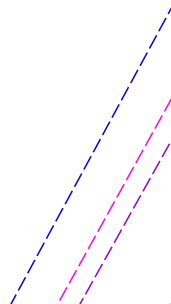
K B

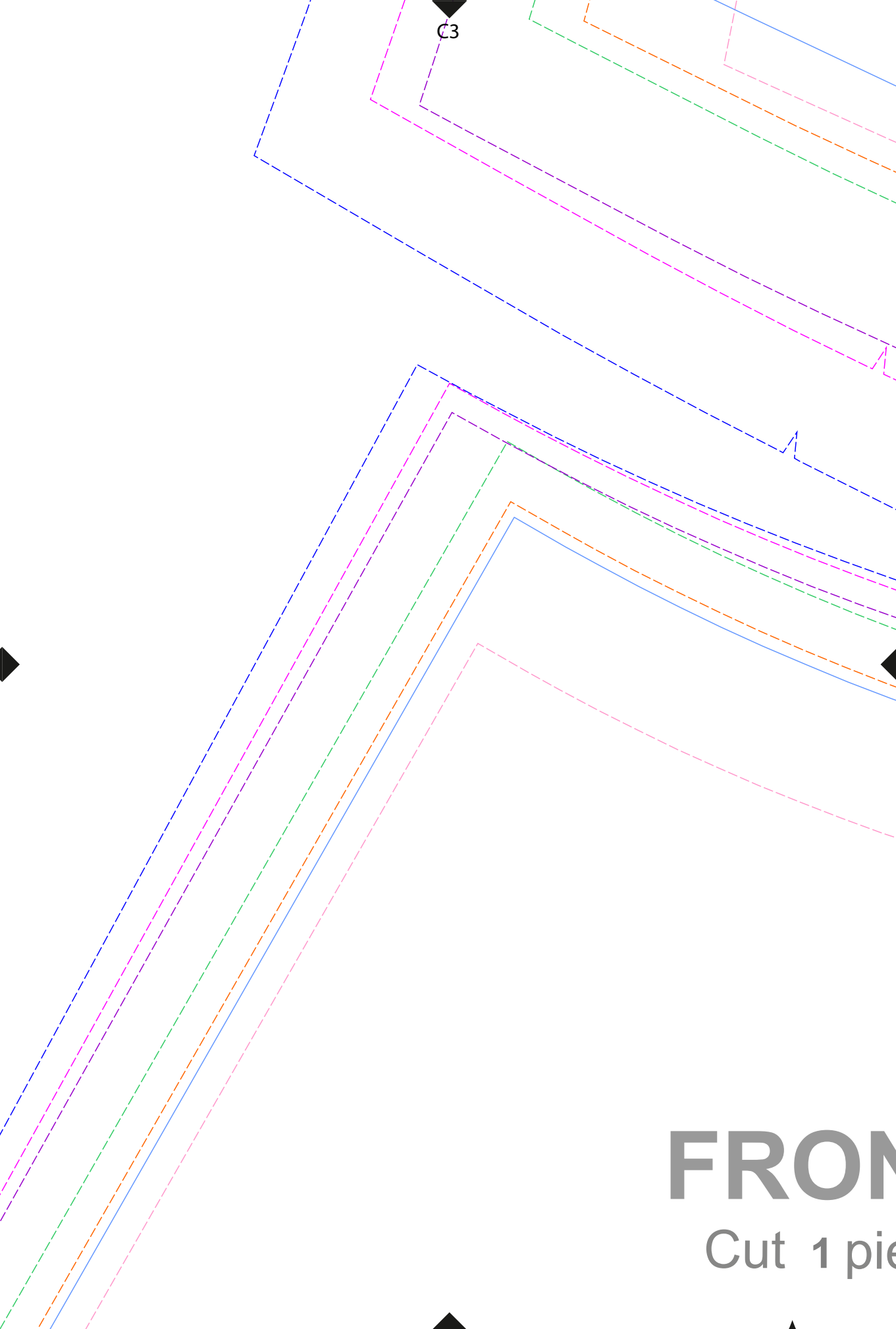
C1





C2



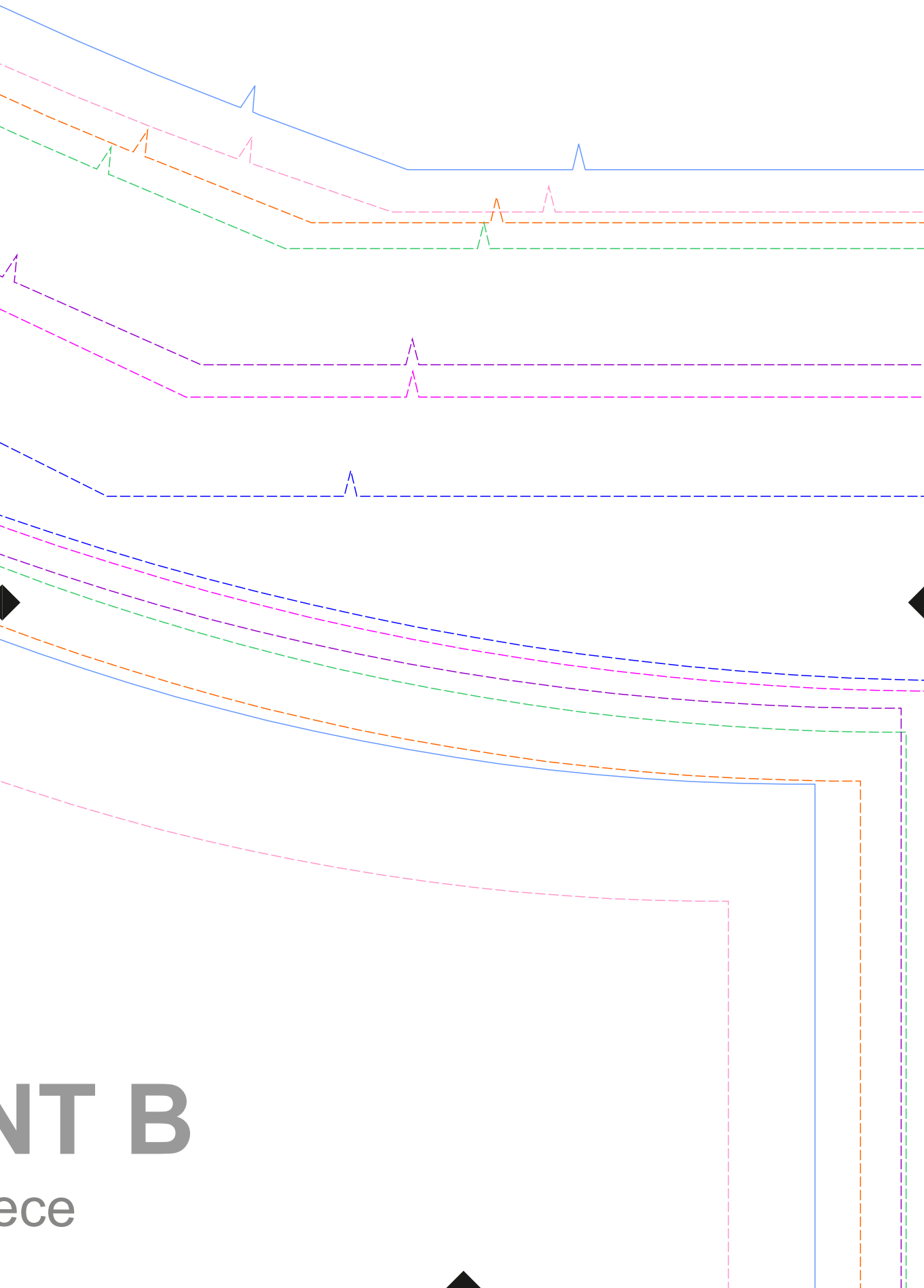


C3

**FROM**

Cut 1 pie

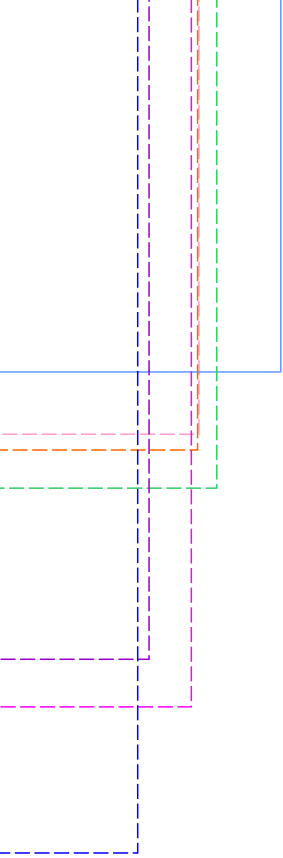
C4



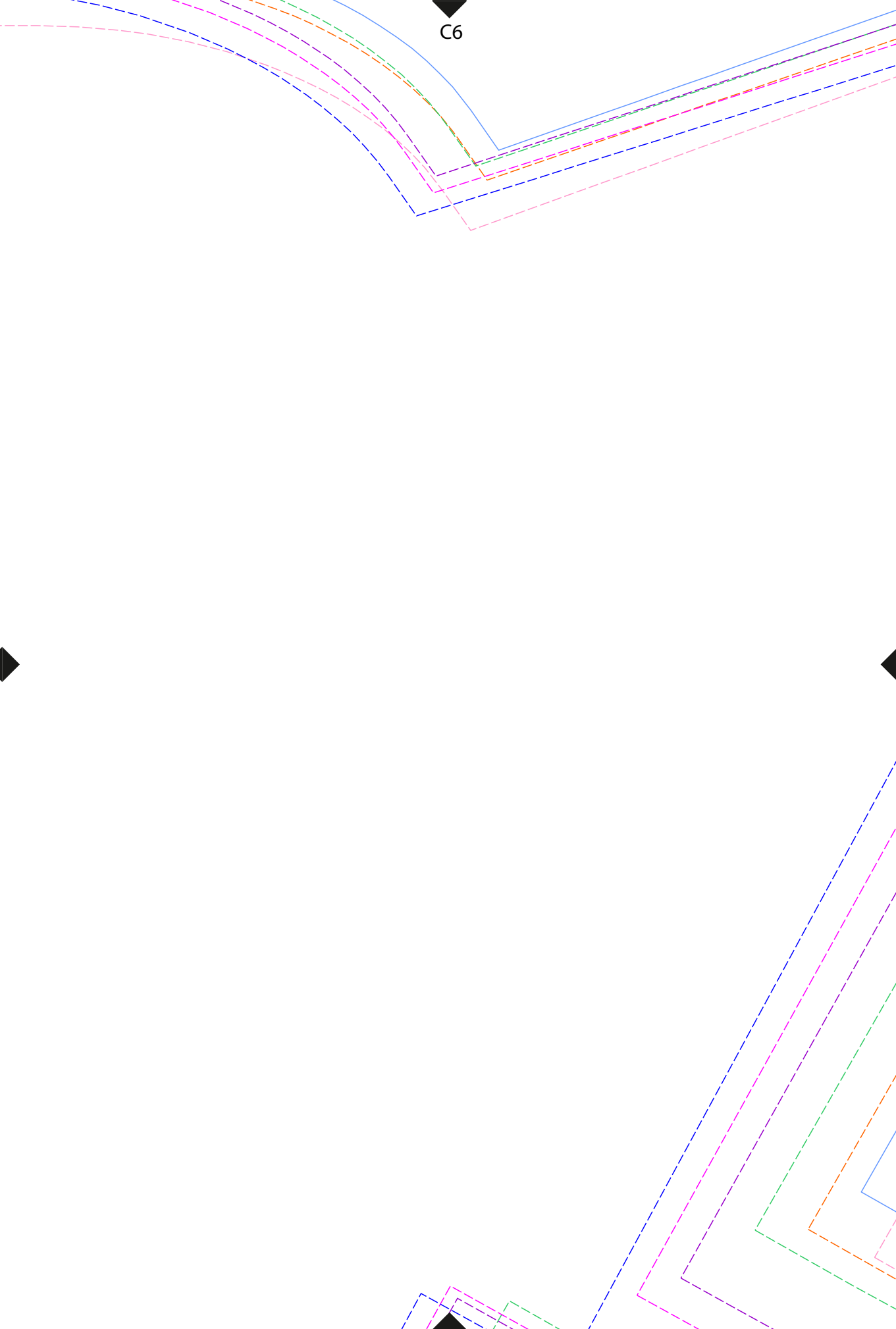
NT B  
ece

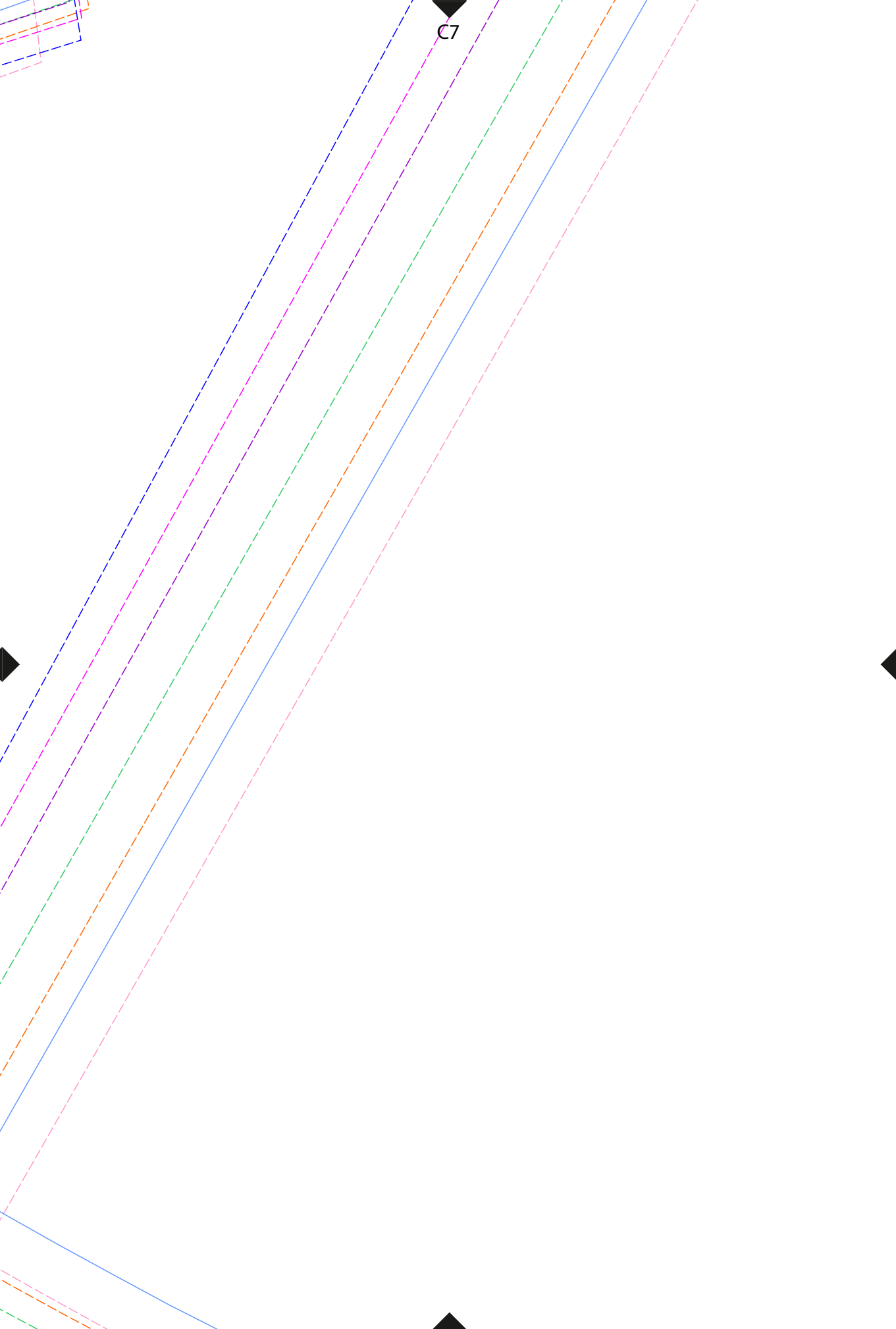
▼

C5



C6



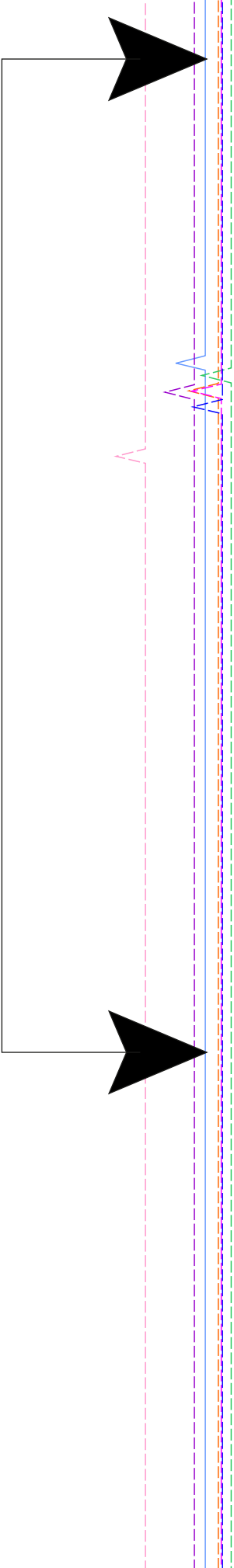


C7

C8

Cut 2 piec

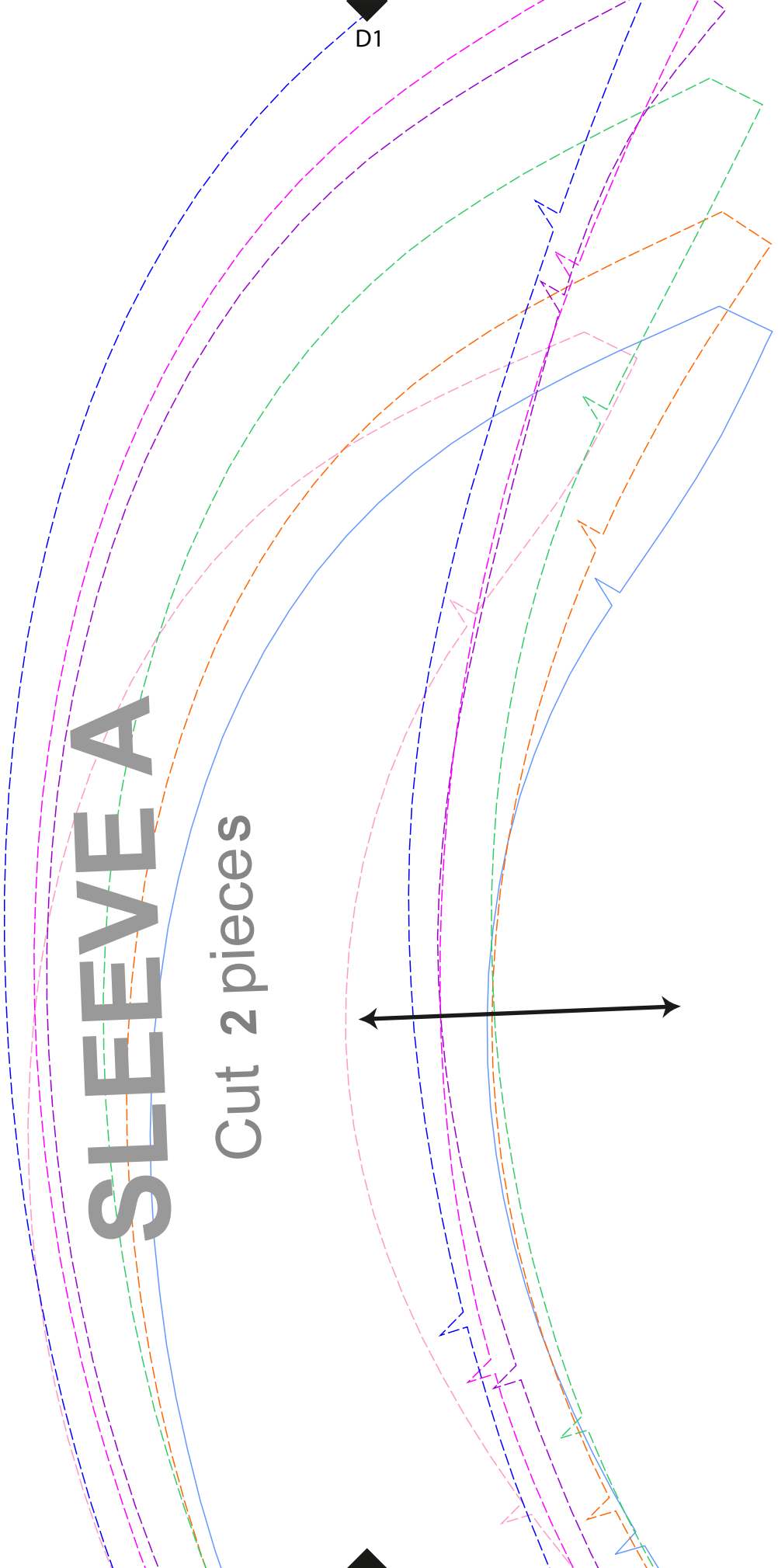




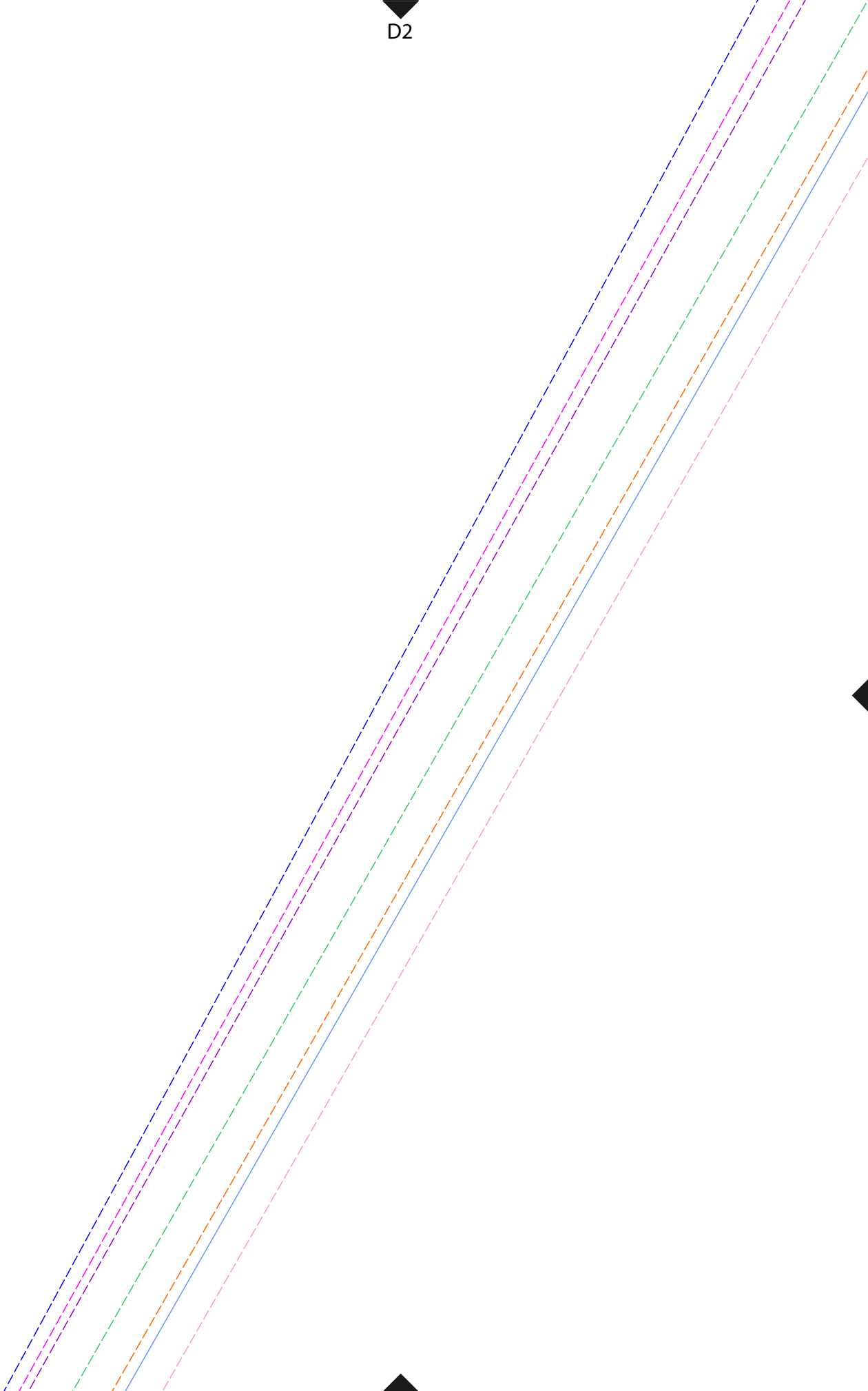
# SLEEVE A

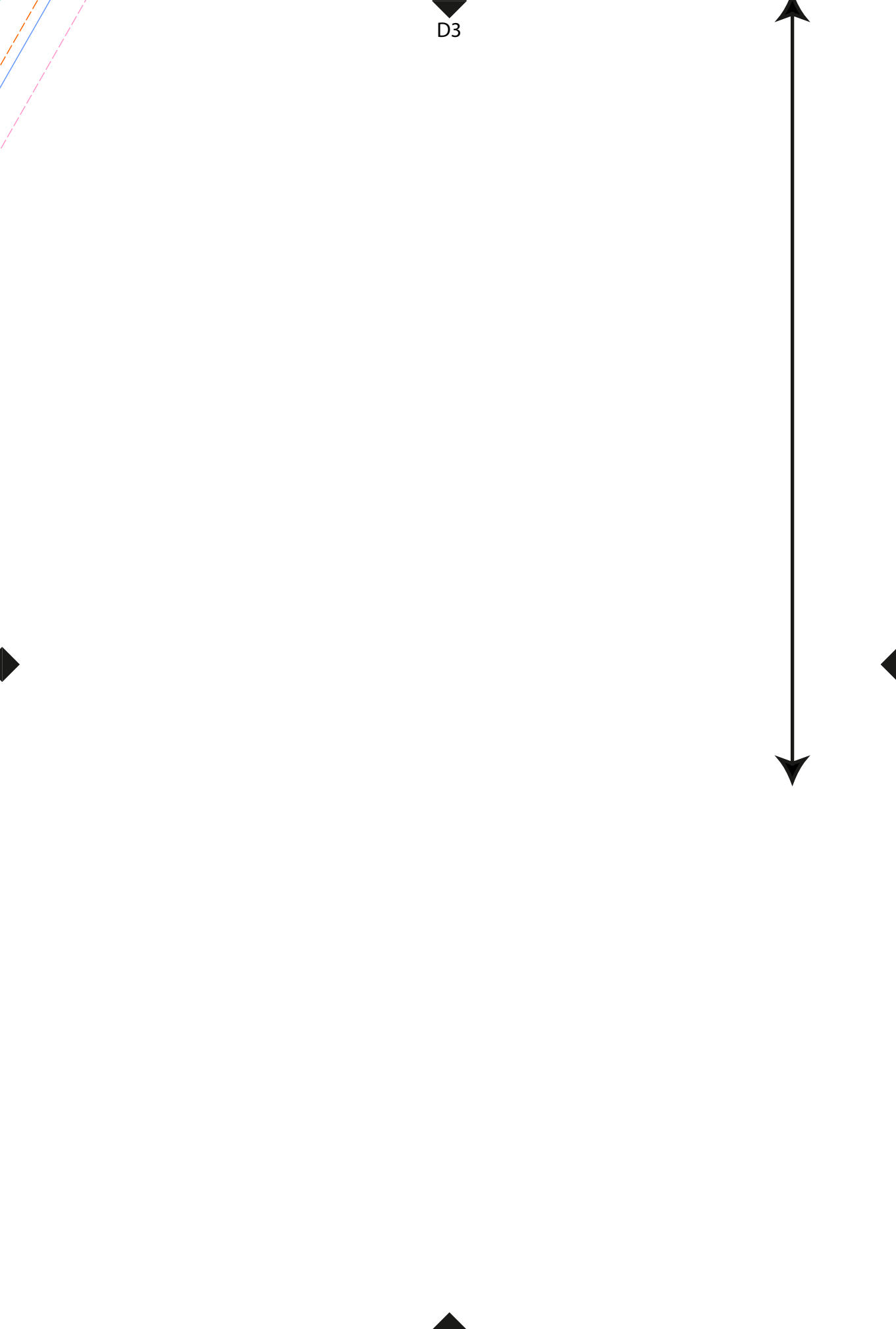
Cut 2 pieces

D1

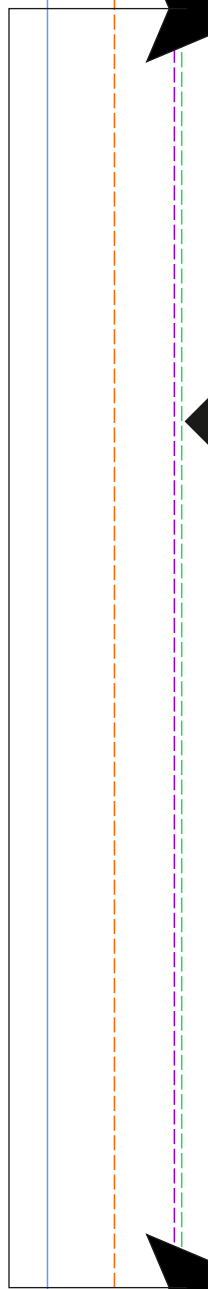


D2

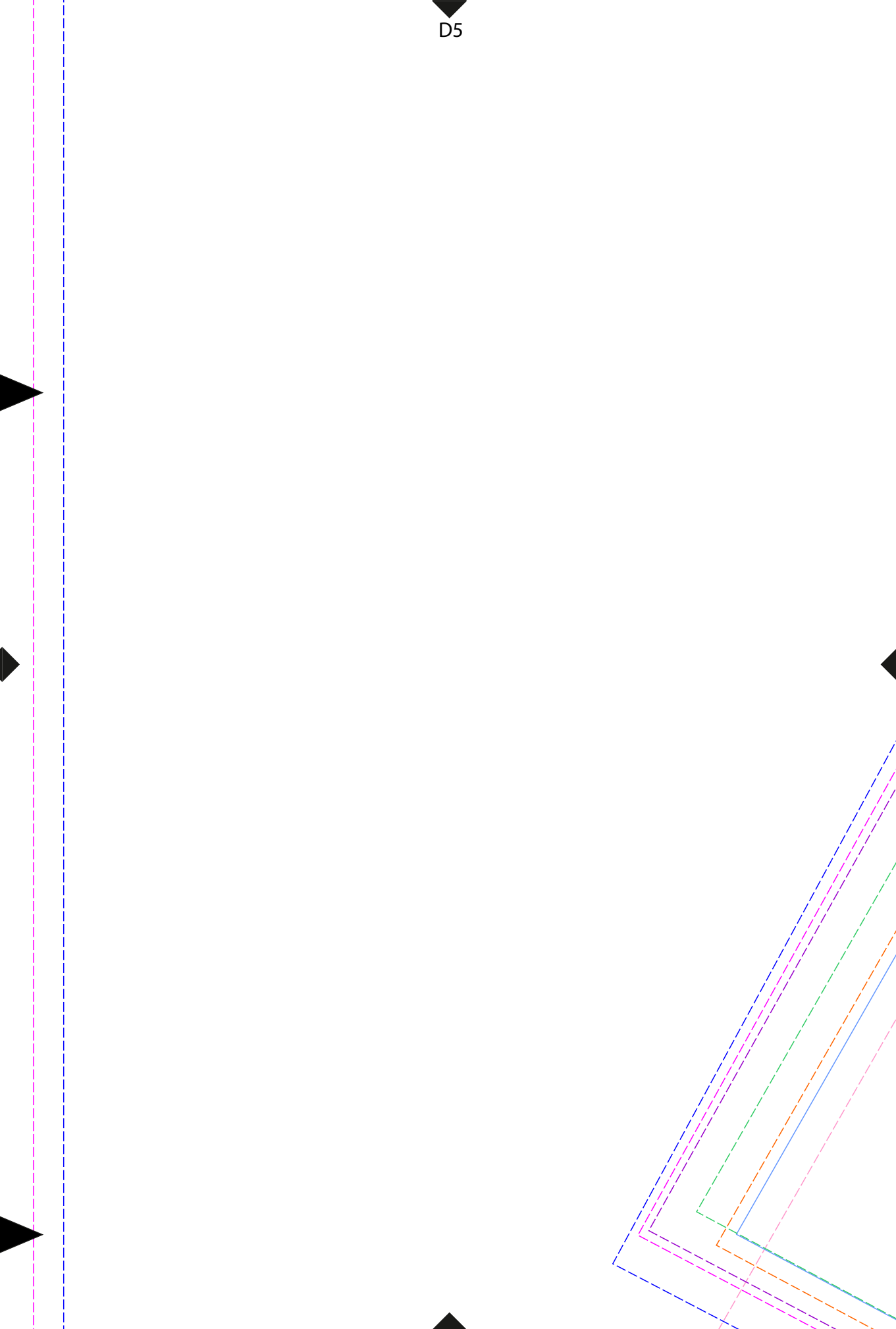


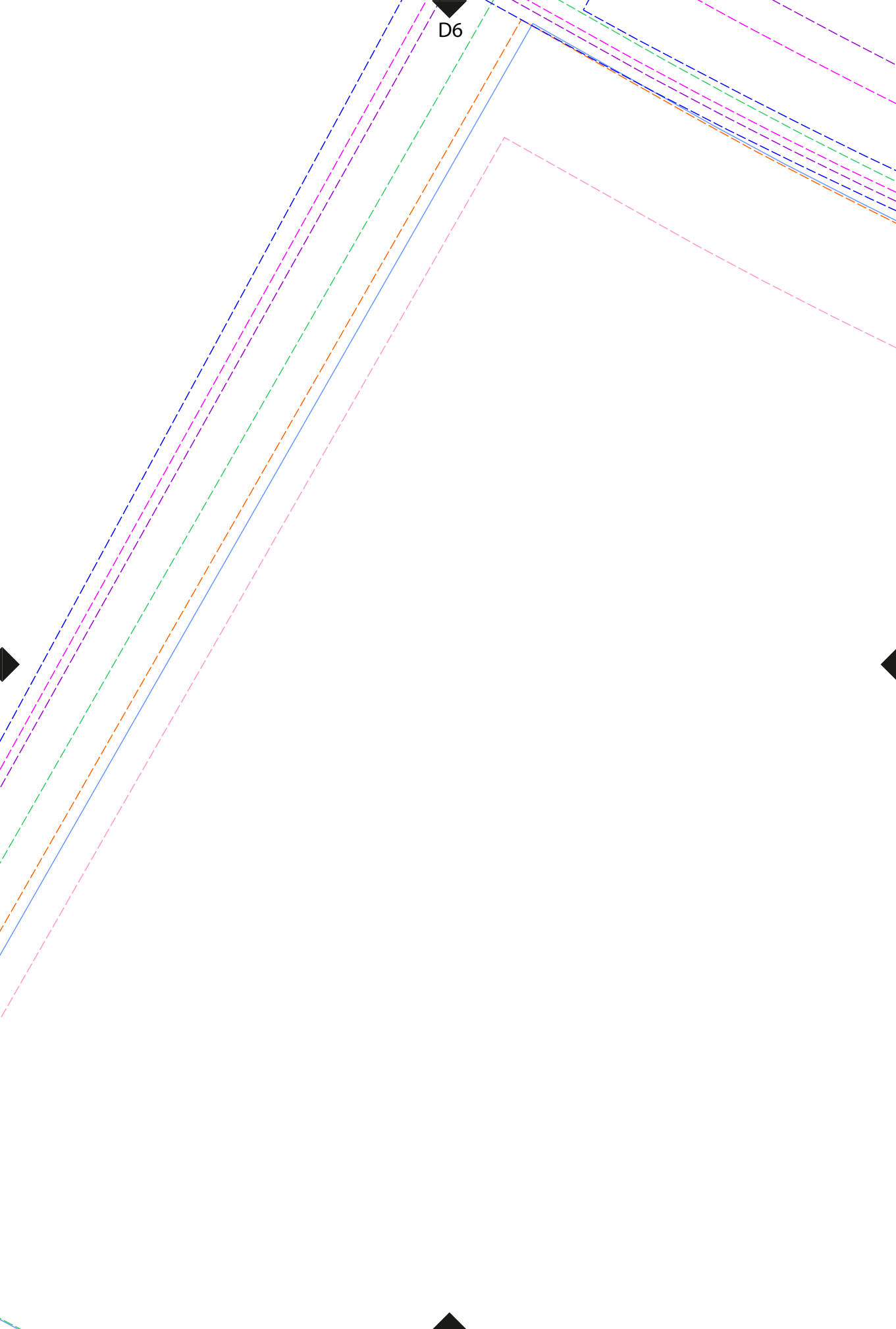


D4



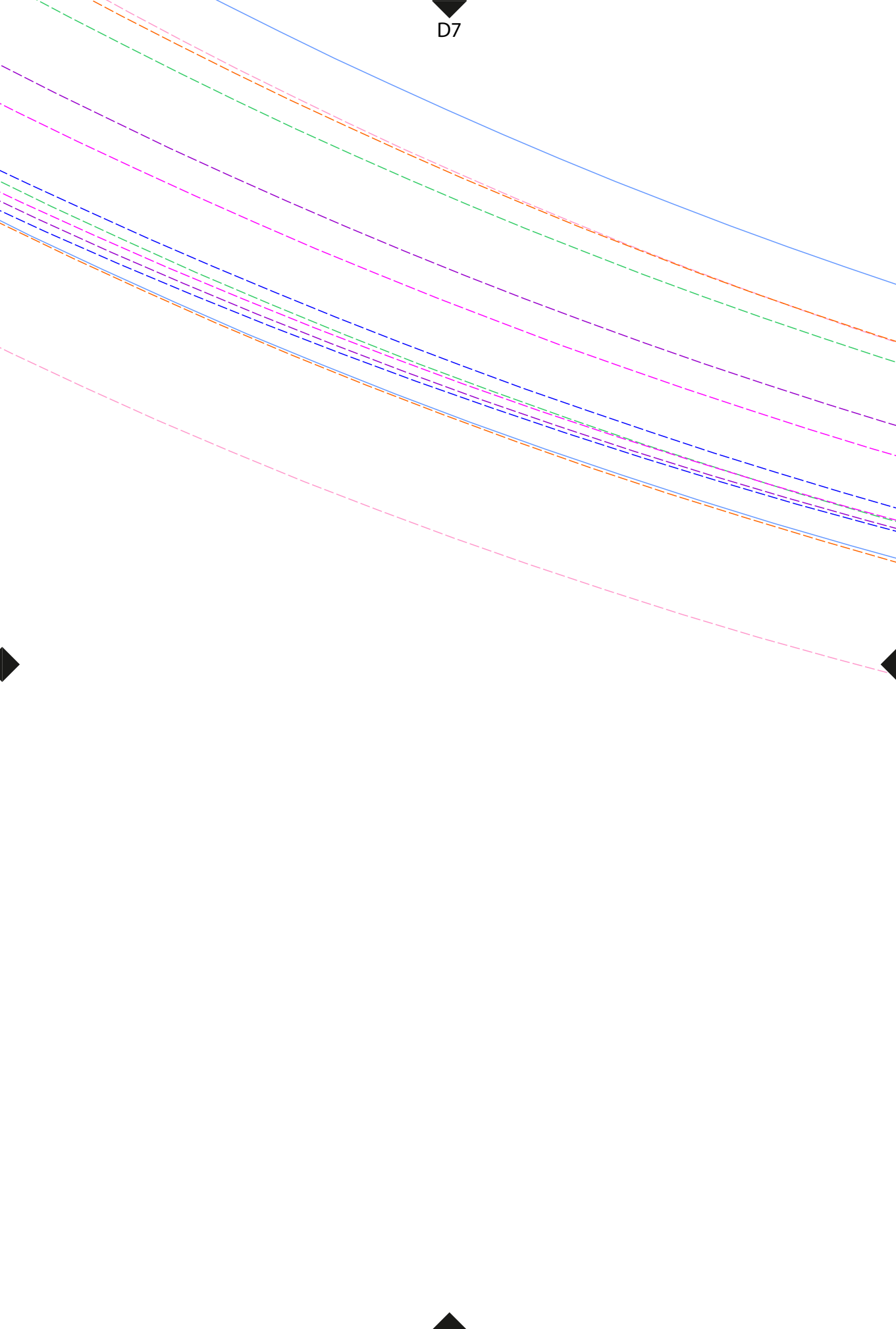
D5



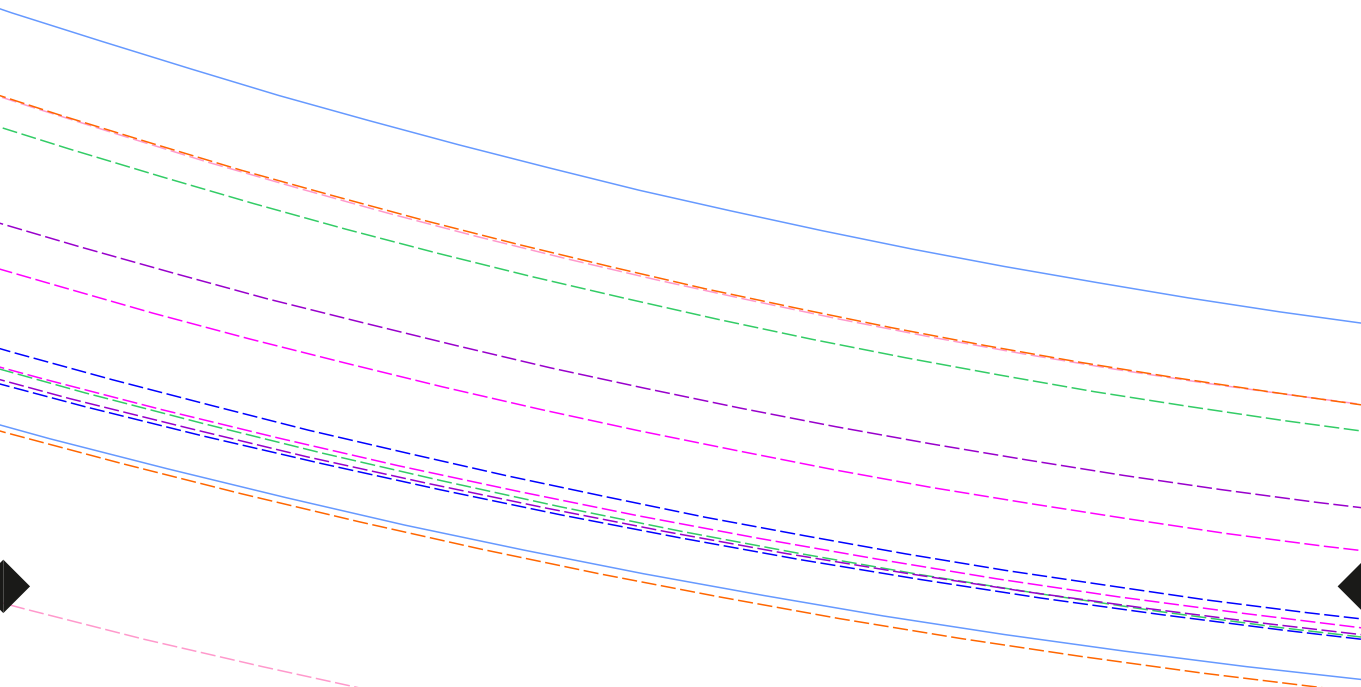


D6

D7



D8

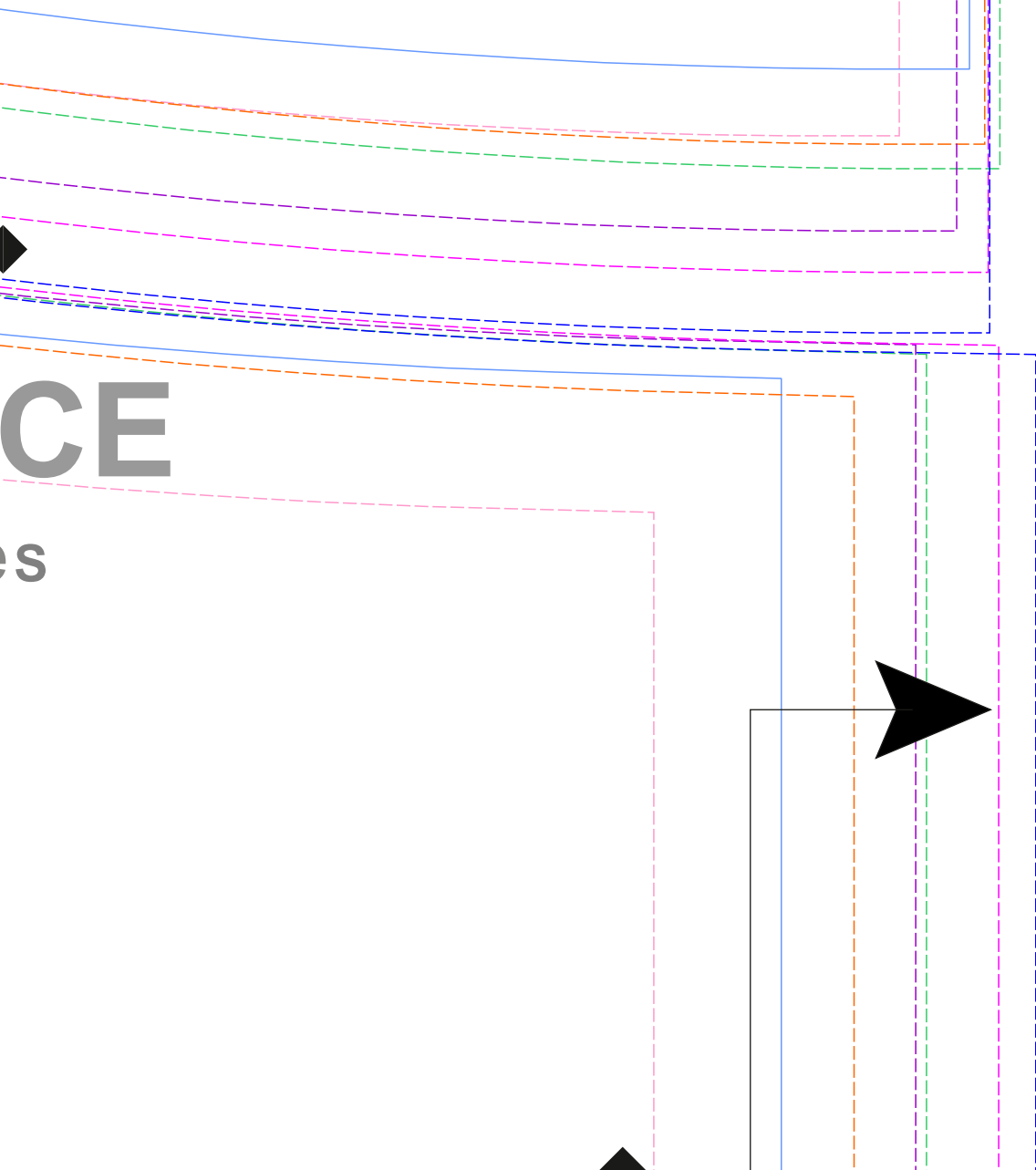


**FLOUN**

Cut 2 piece



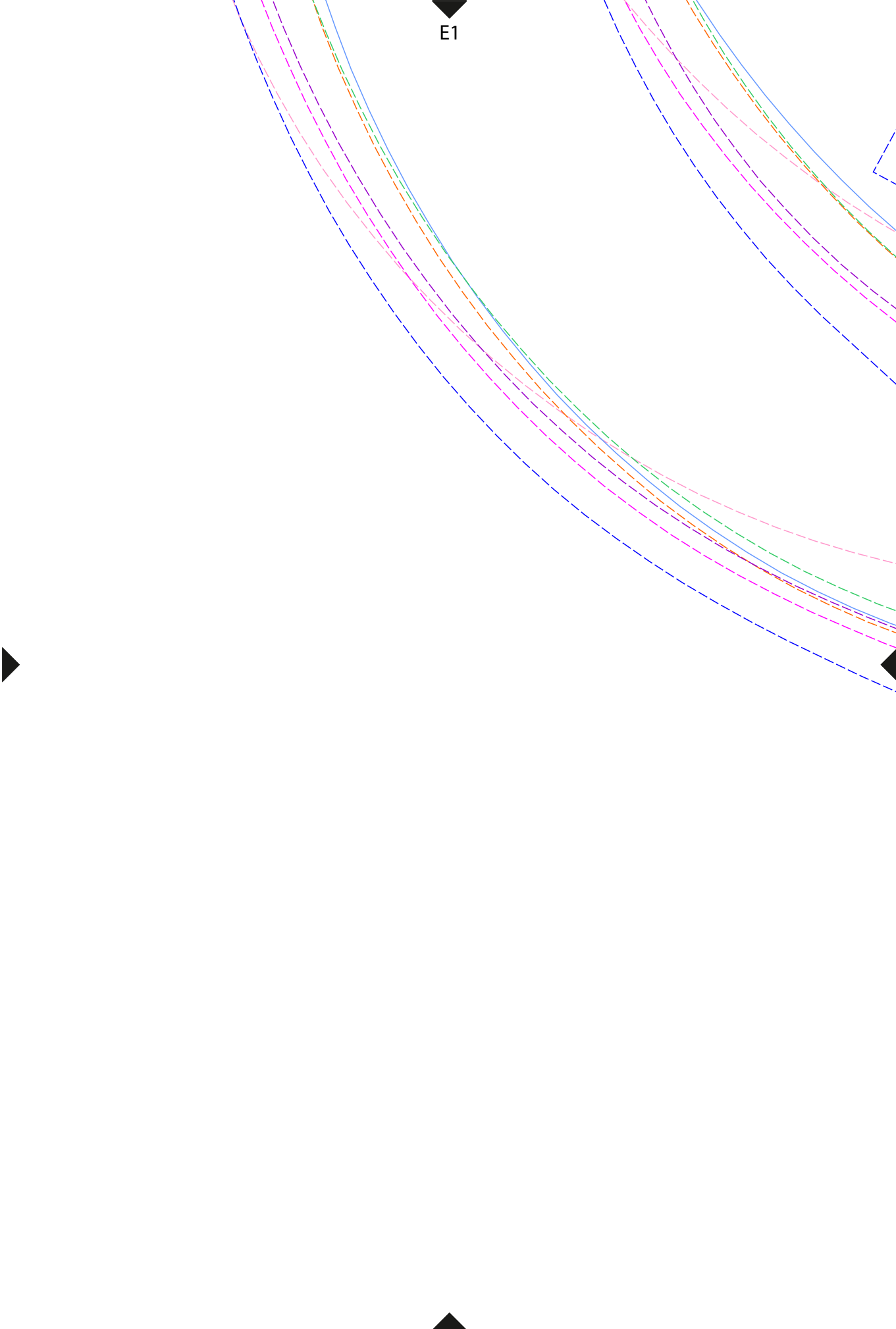
D9



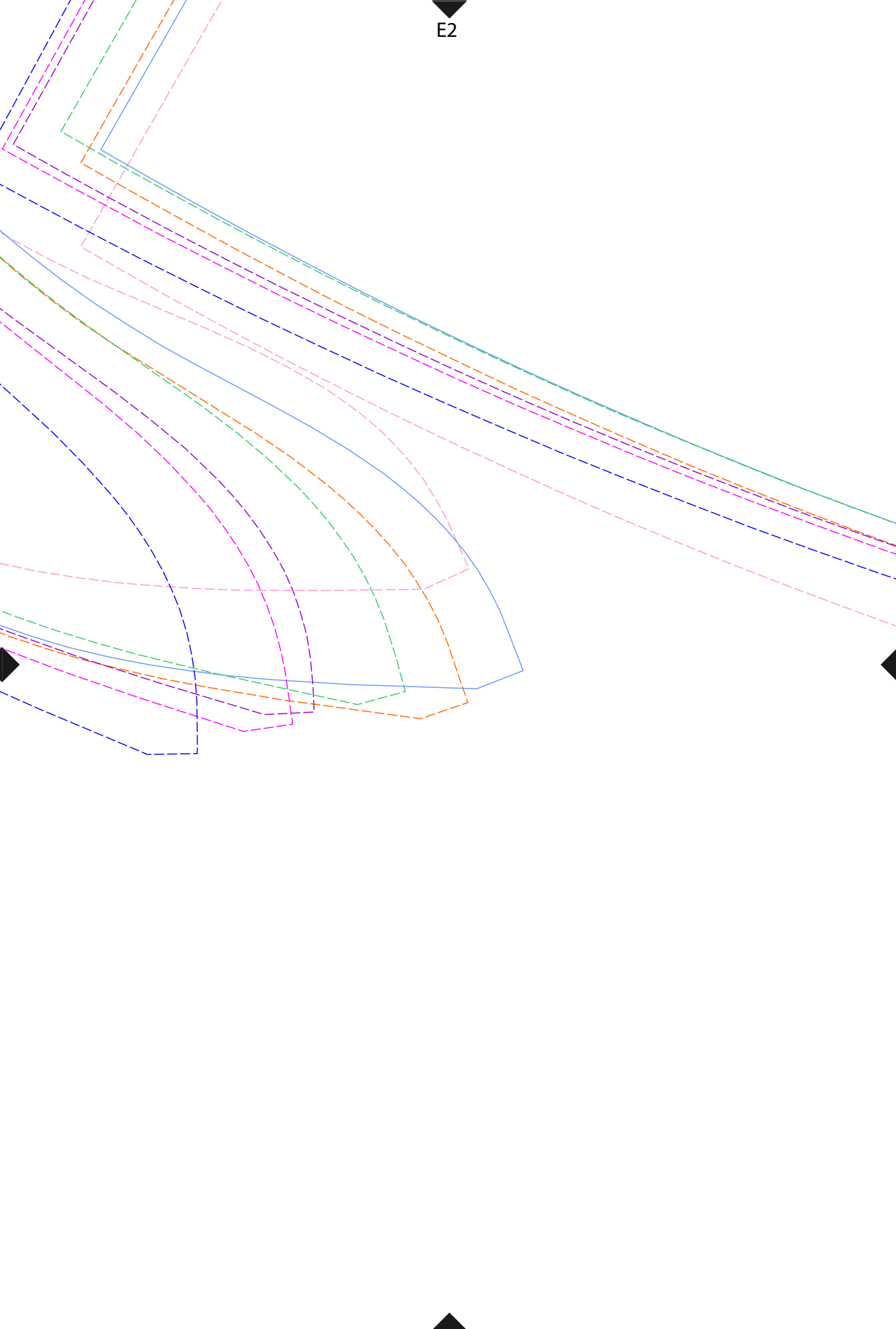
CE

es

E1

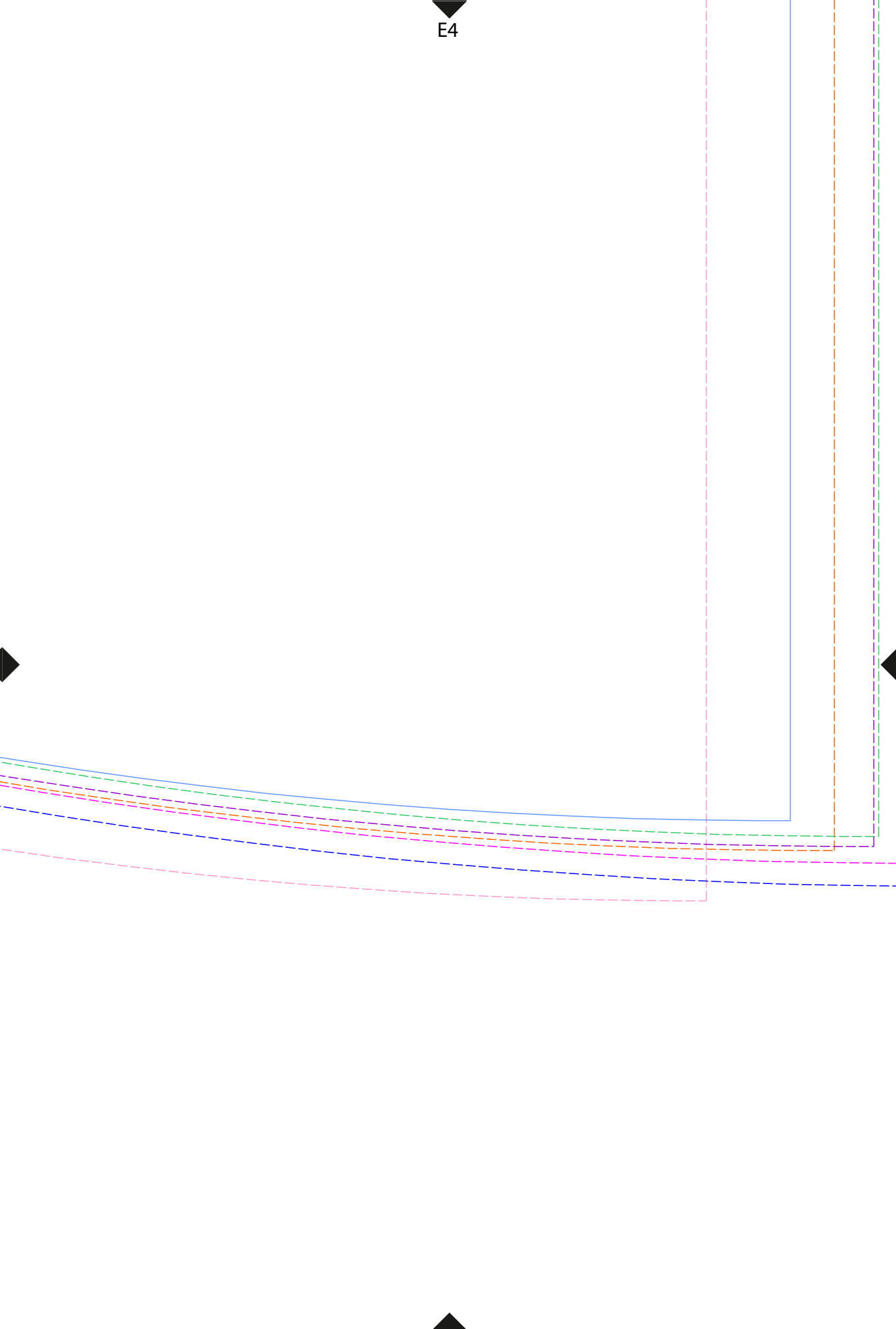


E2

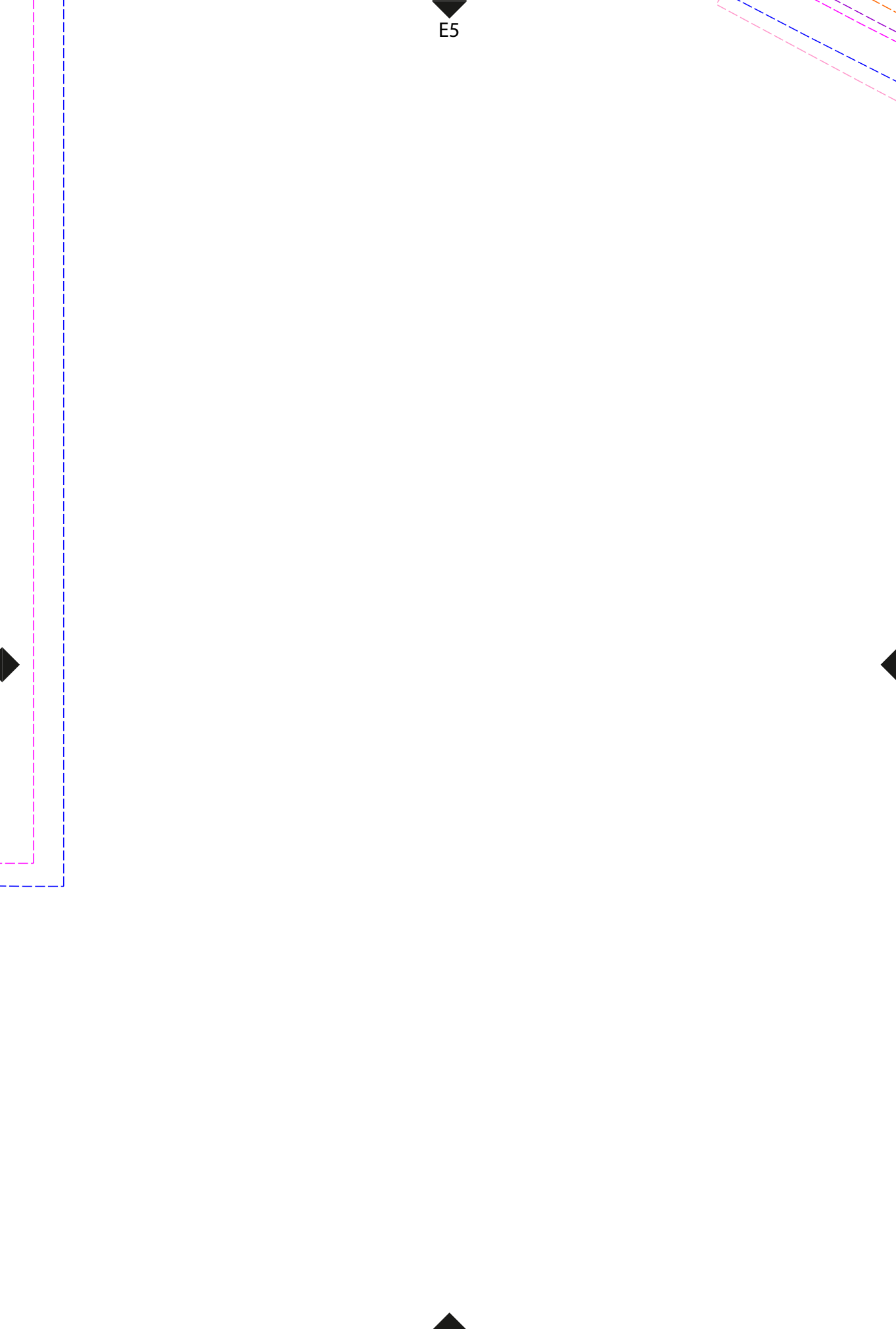




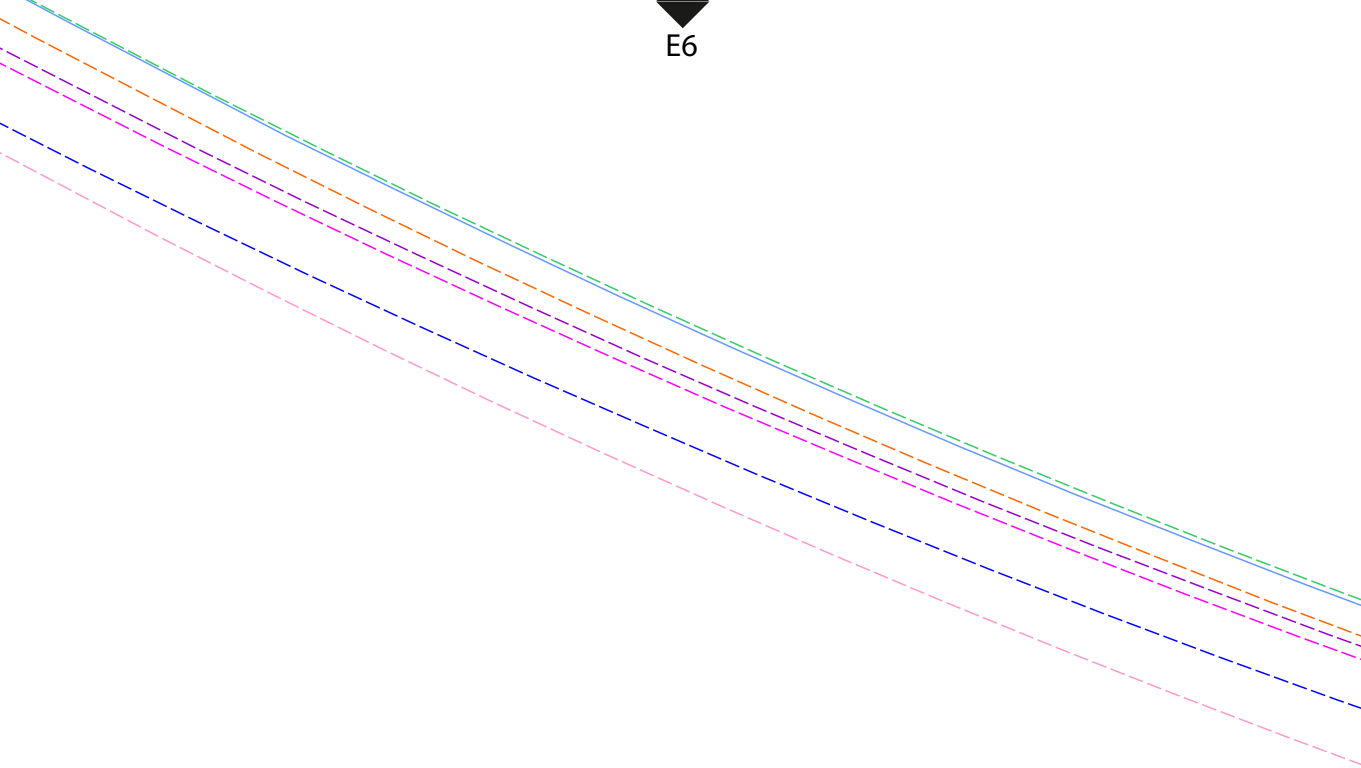
E4



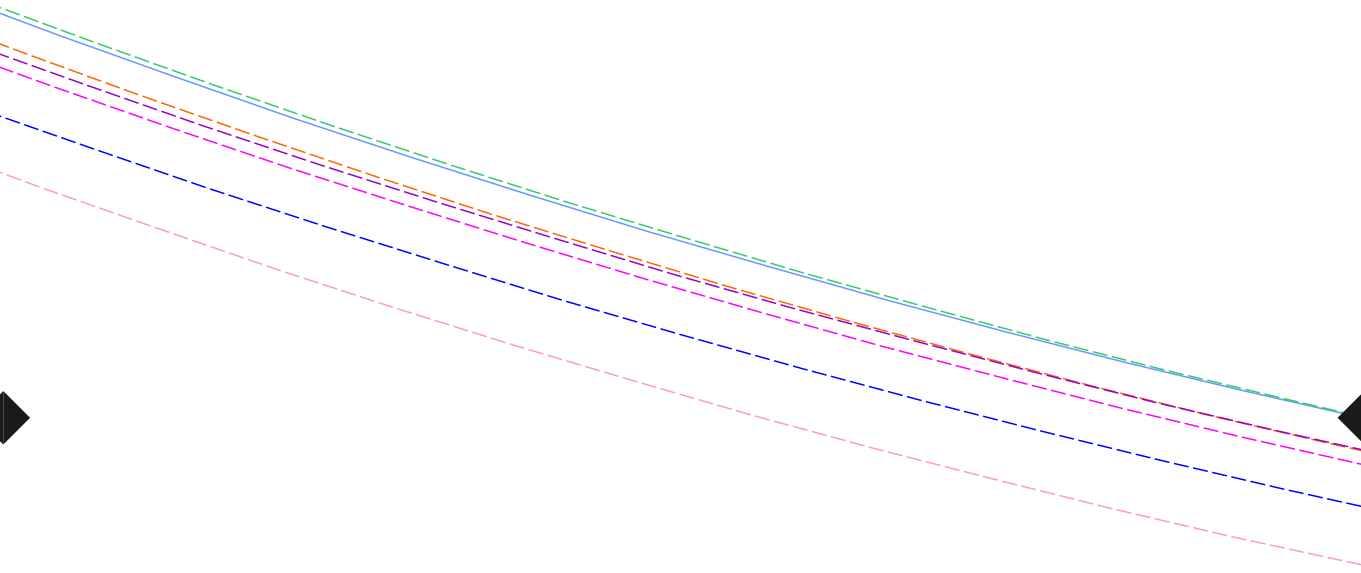
E5



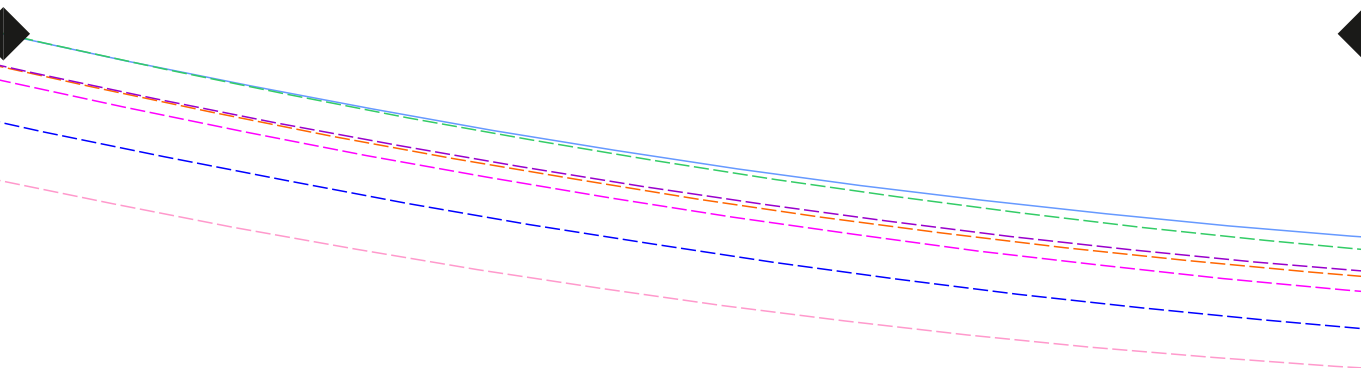
E6



E7



E8



E9

