

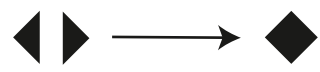
PATTERN ASSEMBLY INSTRUCTIONS

1

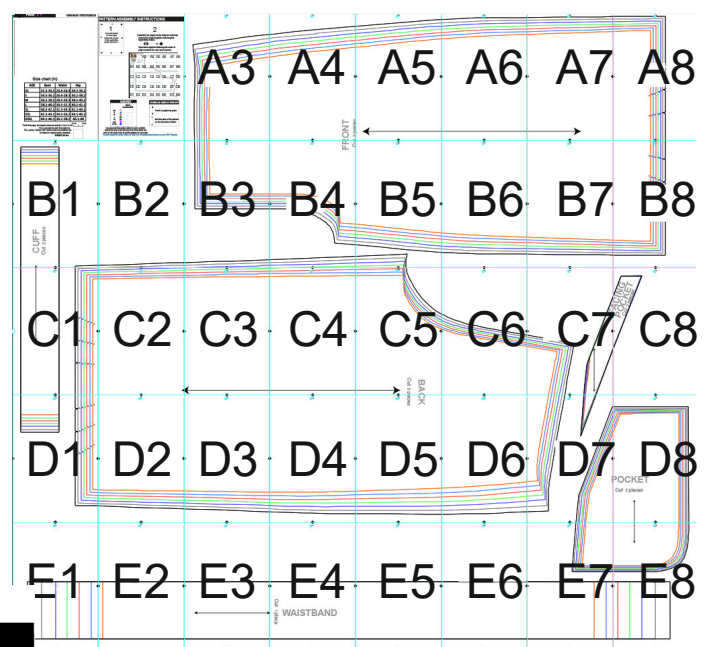
Trace the border of every page joining the corners of the registration marks and cut it off.

2

Assembly the pages as the diagram indicates placing the pages together matching the registration marks



Tape them together following the order of page numbers for rows and columns.

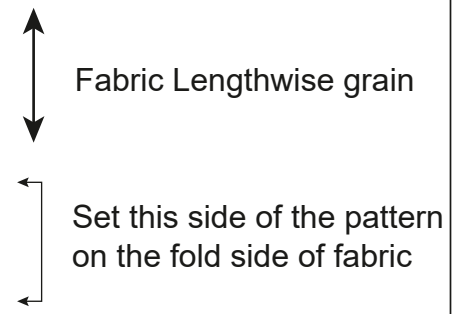


SIZE KEY

XS		
S		
M		
L		
XL		
XXL		
XXXL		

Seam allowance: 1 cm / 0.4 inches

SYMBOLS USED IN THIS PATTERN



You can print this pattern either in color or B&W.

Select the size in the size key and follow either the color or the style of line to cut the pattern for your size.

To print separate sizes, show or hide the correspondent layers on your PDF Reader




INCHES

SIZE in	Bust	Waist	Hip
XS	34.3	26.4	36.2
S	36.2	28.3	38.2
M	38.2	30.3	40.2
L	40.2	32.3	42.1
XL	42.1	34.3	44.1
XXL	44.1	36.2	46.1
XXXL	46.1	38.2	48

CENTIMETERS

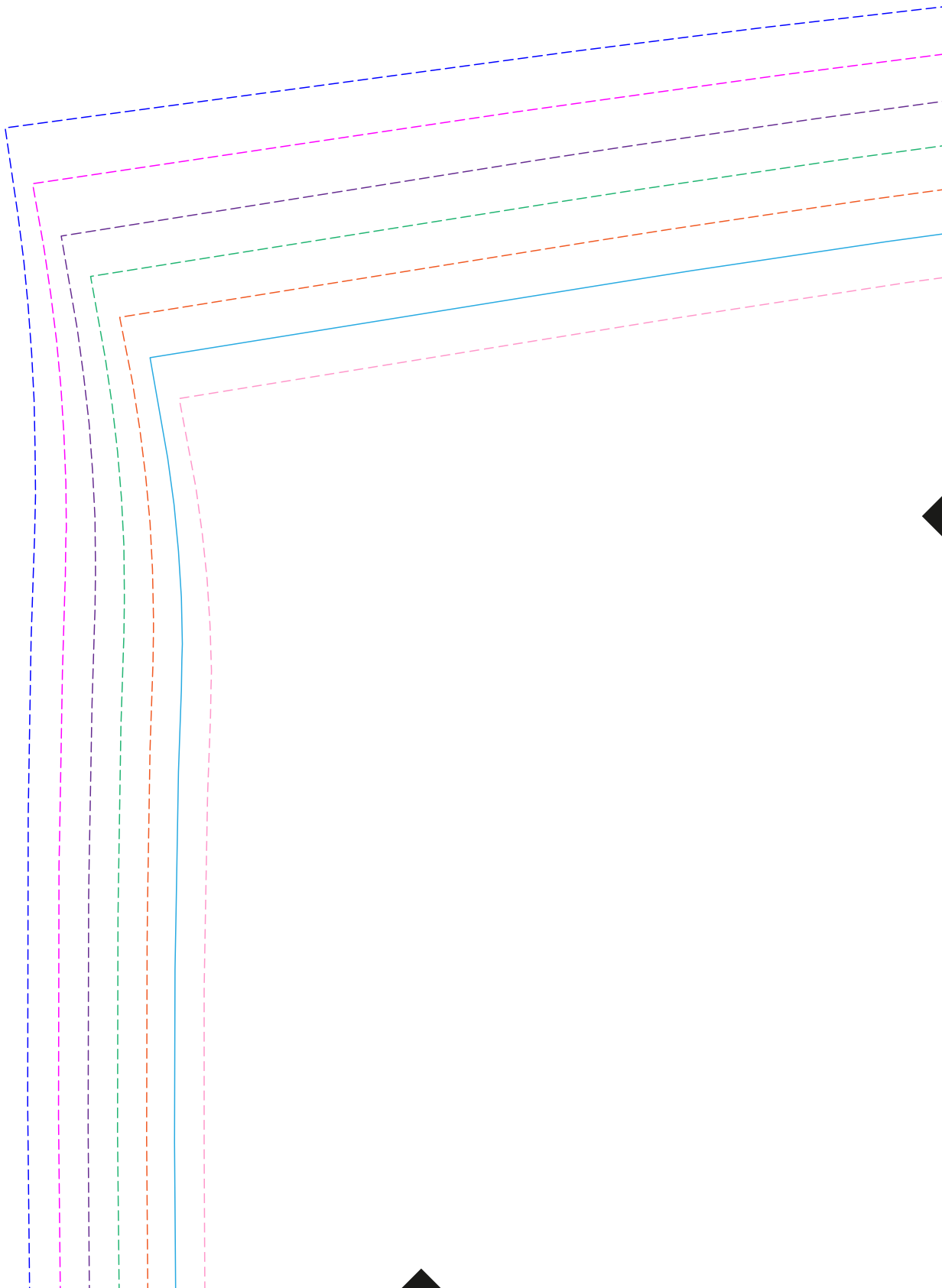
SIZE cm	Bust	Waist	Hip
XS	87	67	92
S	92	72	97
M	97	77	102
L	102	82	107
XL	107	87	112
XXL	112	92	117
XXXL	117	97	122

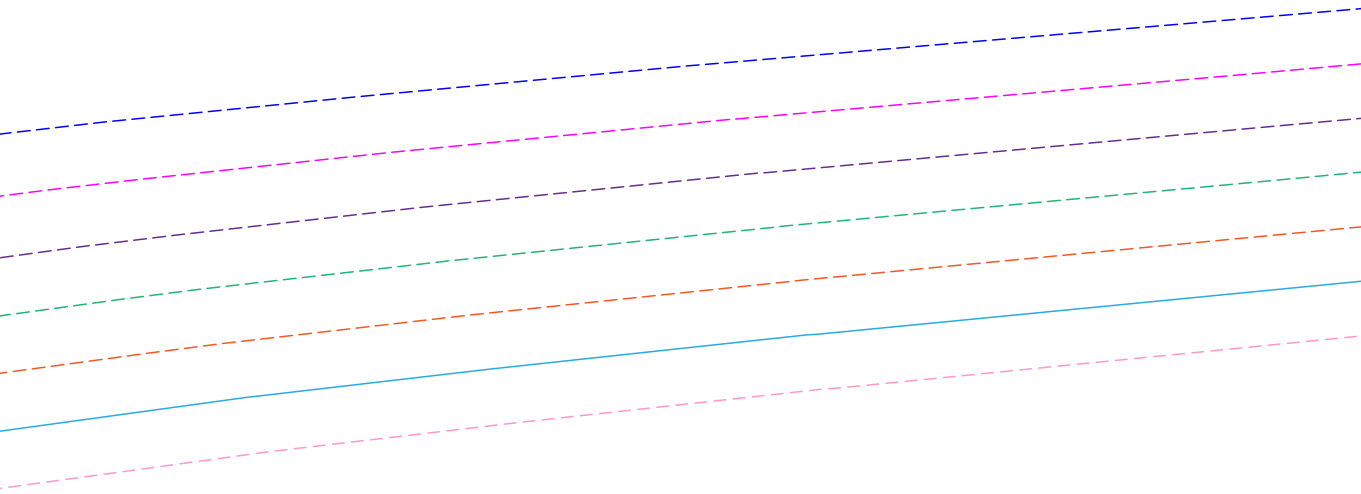
Print this page, the square must be exactly 2 cm x 2 cm  0 Cm 2 Cm
 If it is, proceed to print the patterns.

The printer "actual size" option must be enabled and all resize or adjust option disabled.

PRINT IN A4



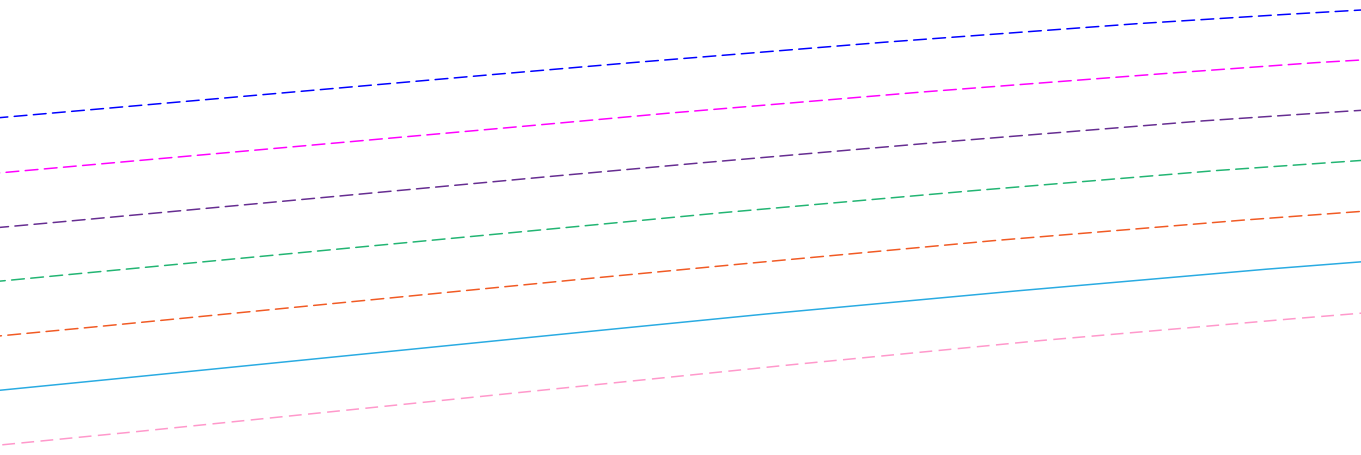




FRONT

at 2 pieces

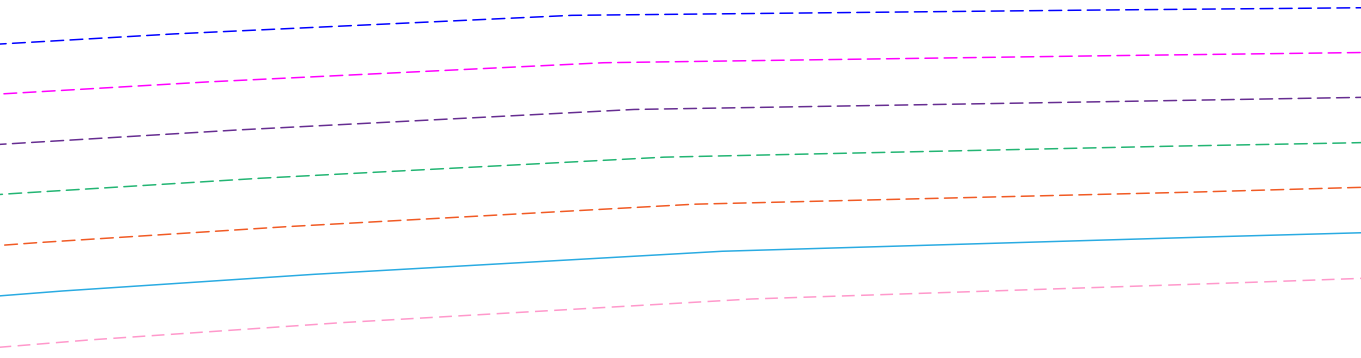
A5



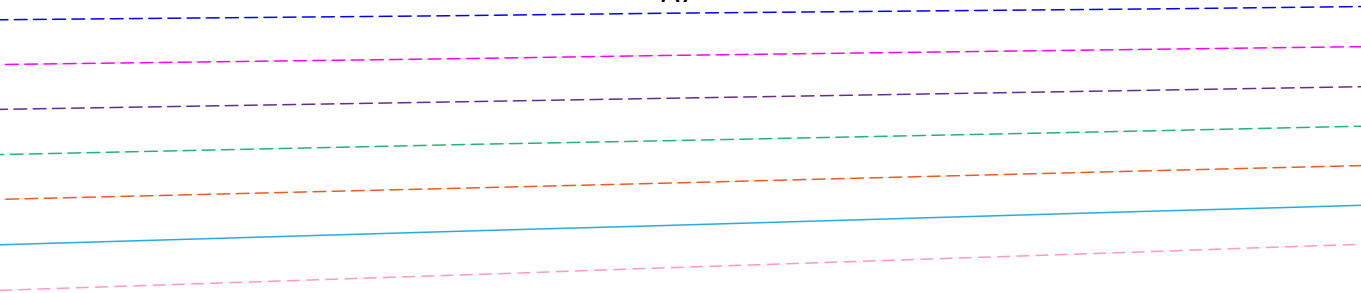
0
1
2
3
4
5
6
7
8
9



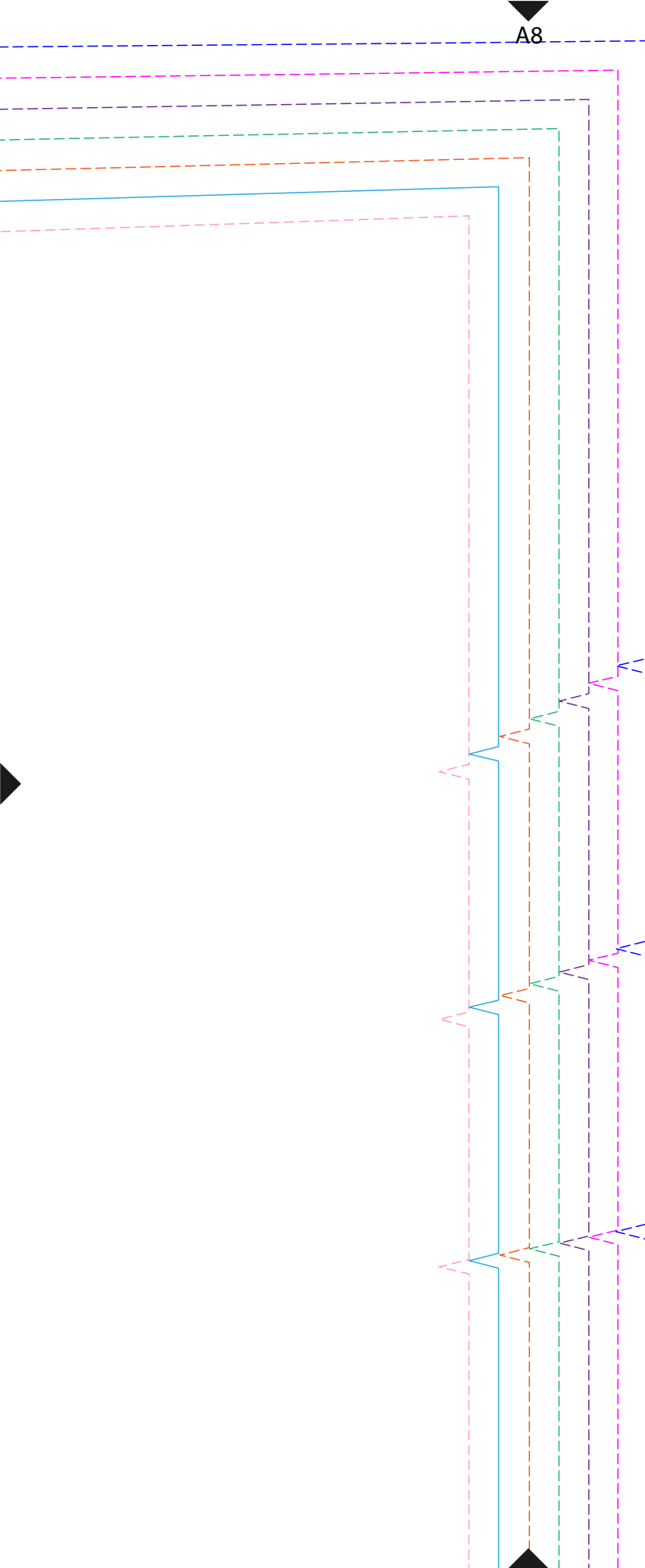
A6



A7

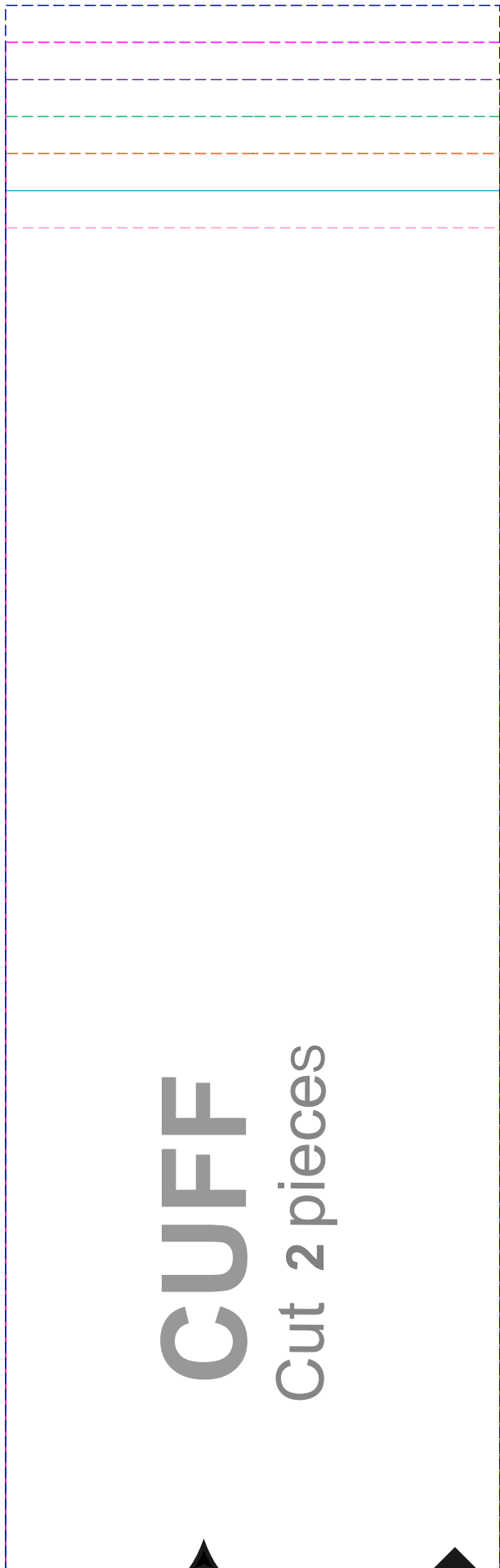


A8



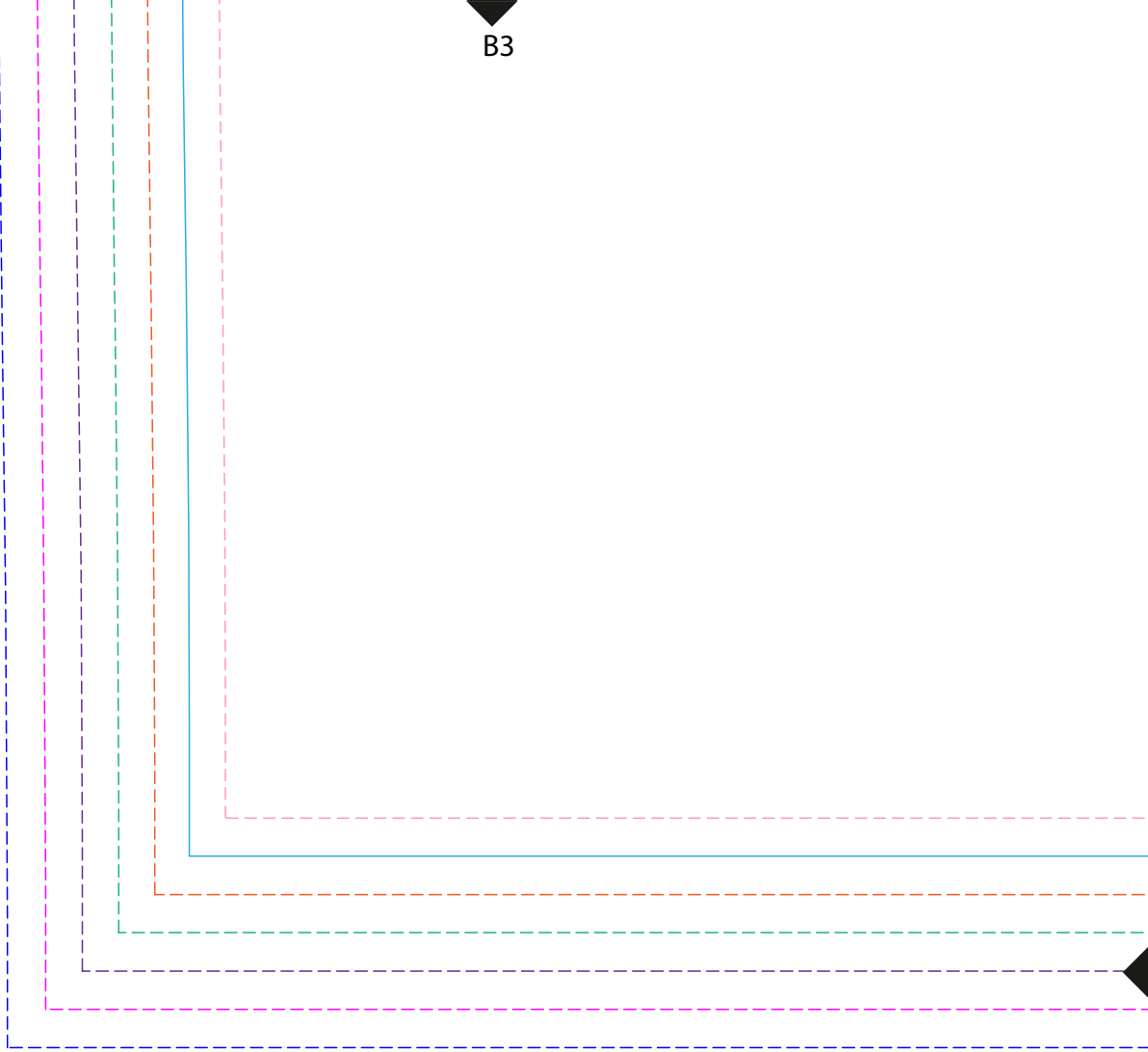
CUFF

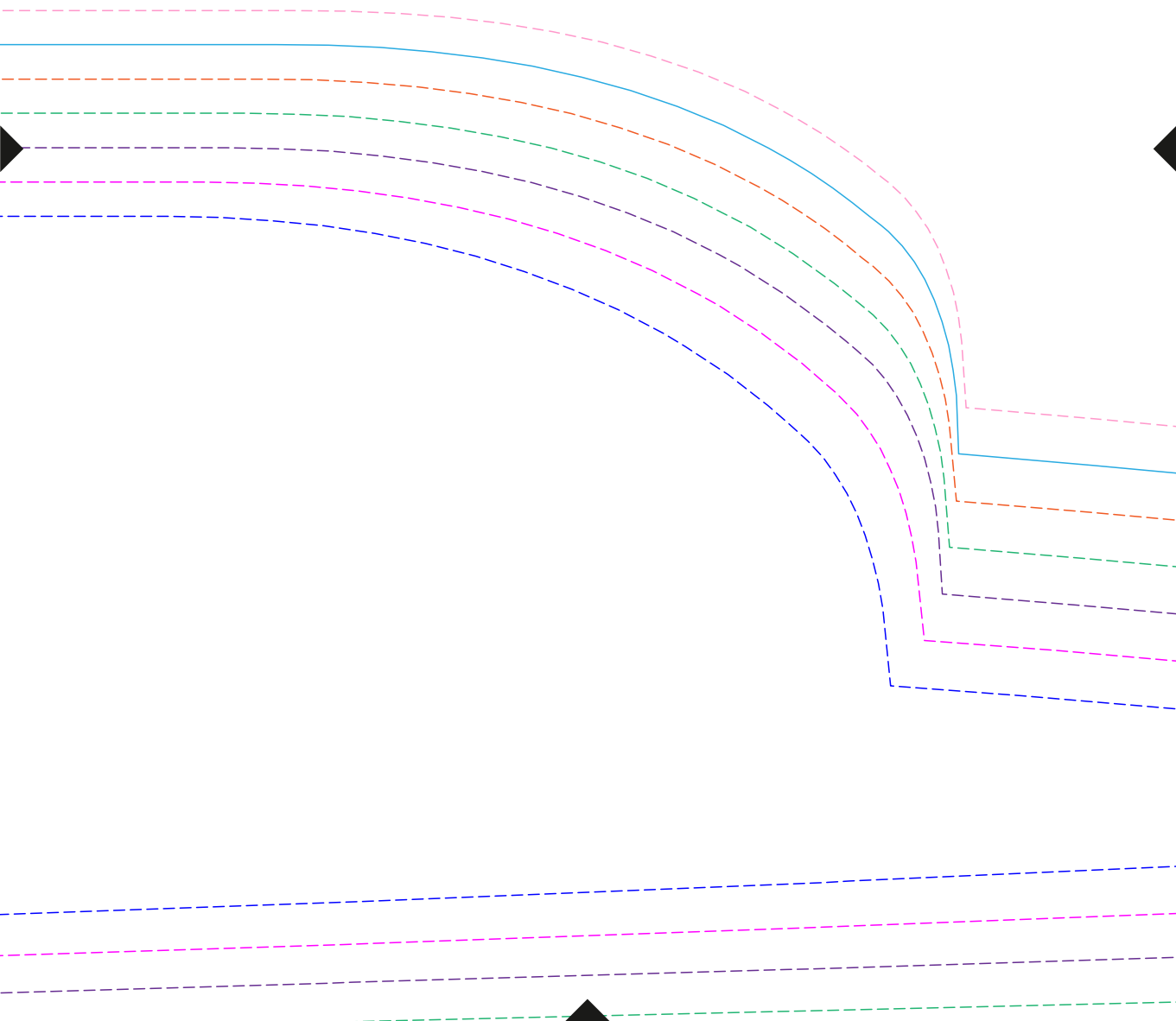
Cut 2 pieces

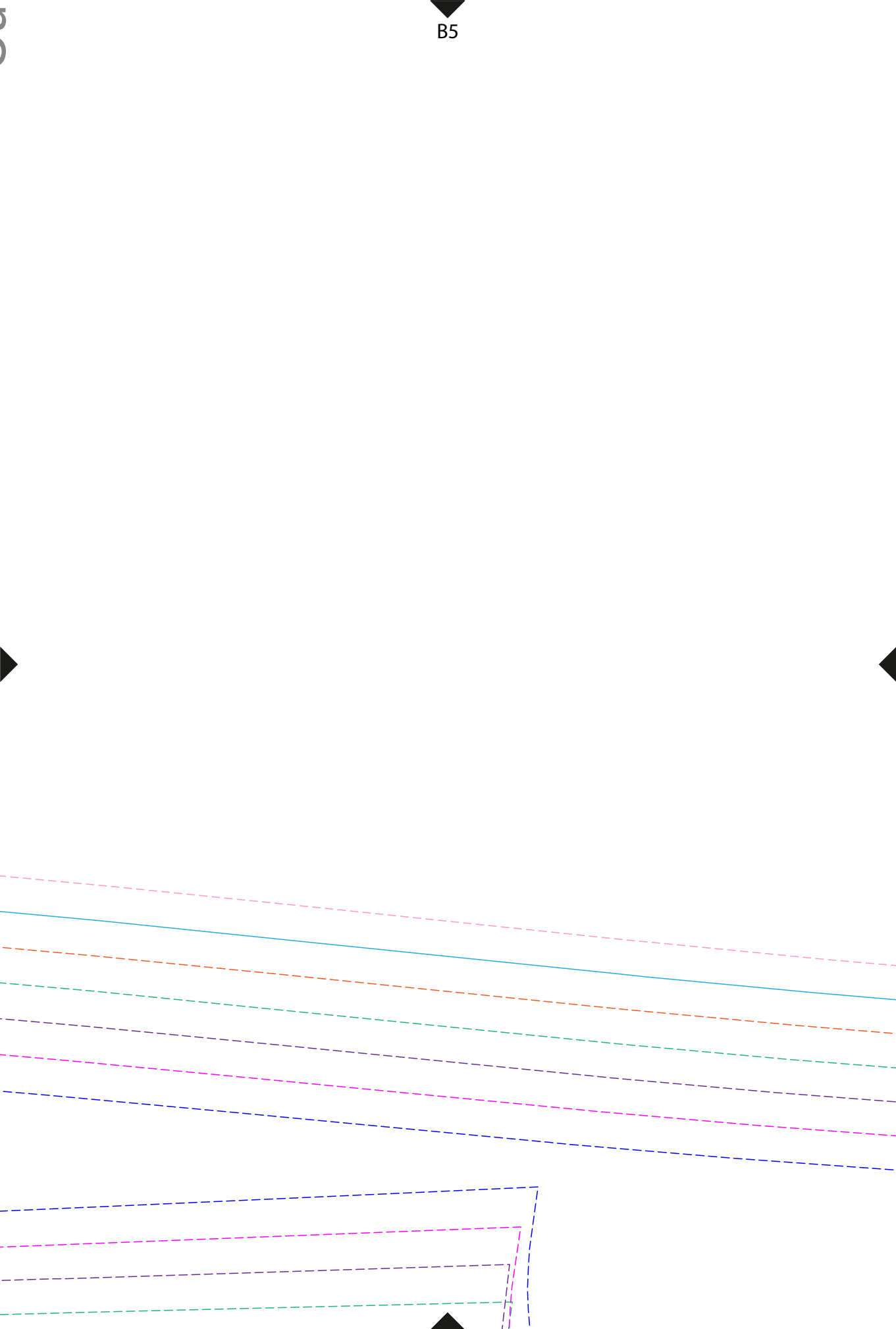


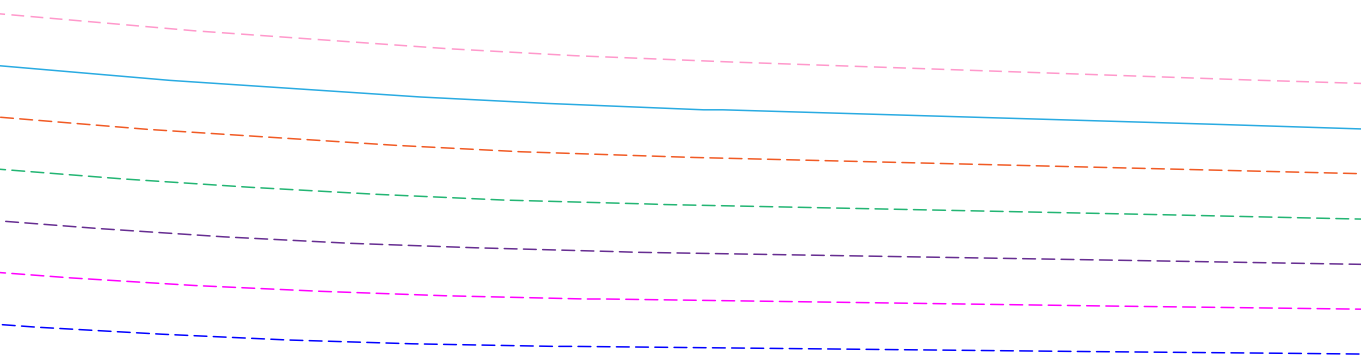


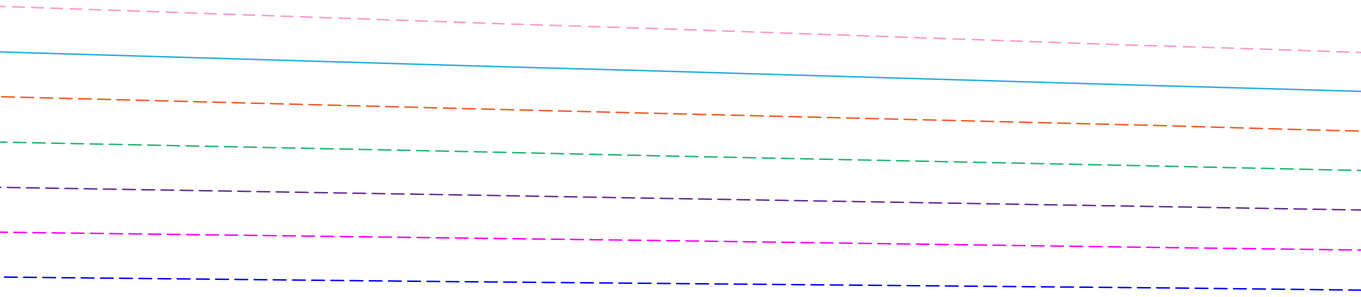
B3



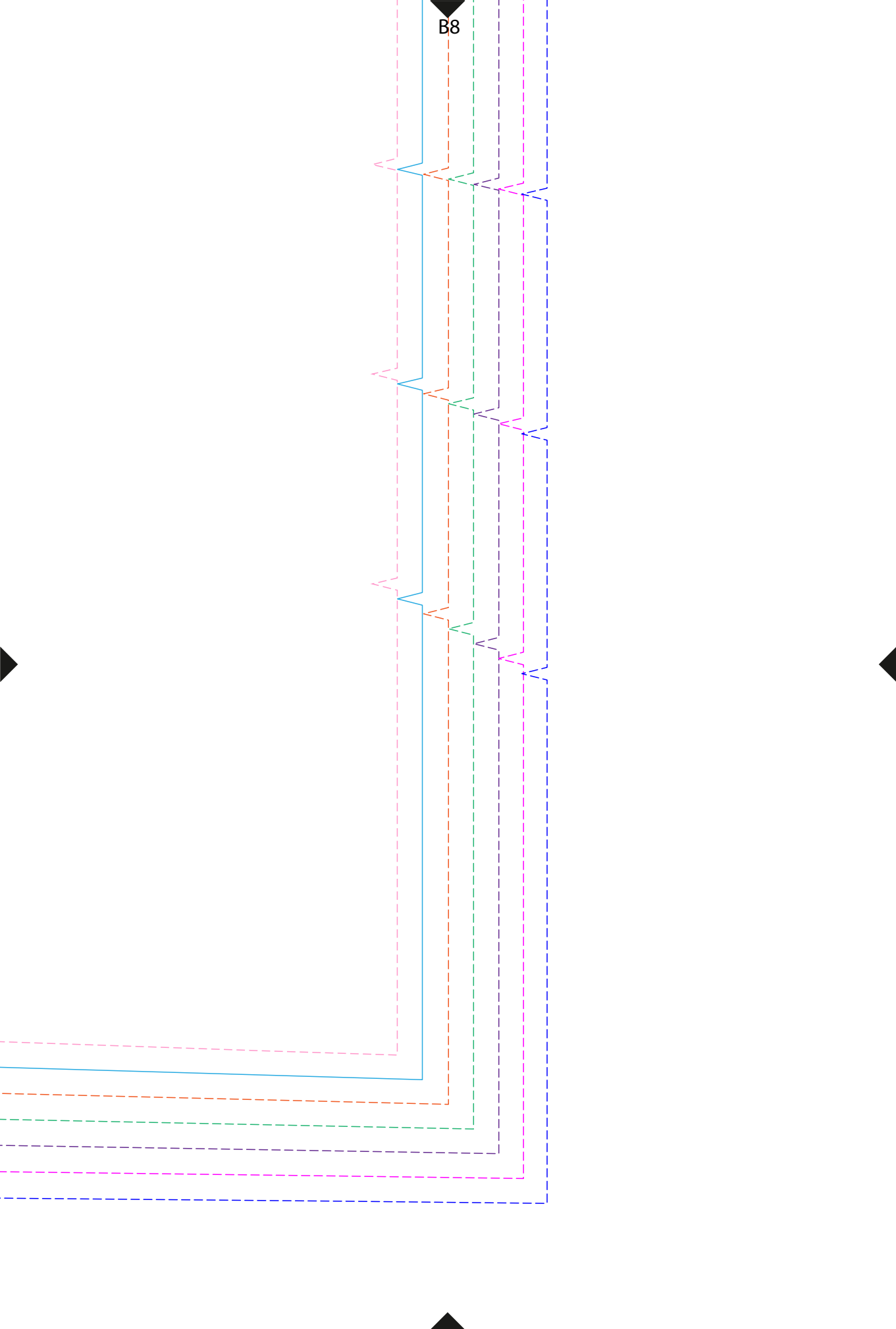


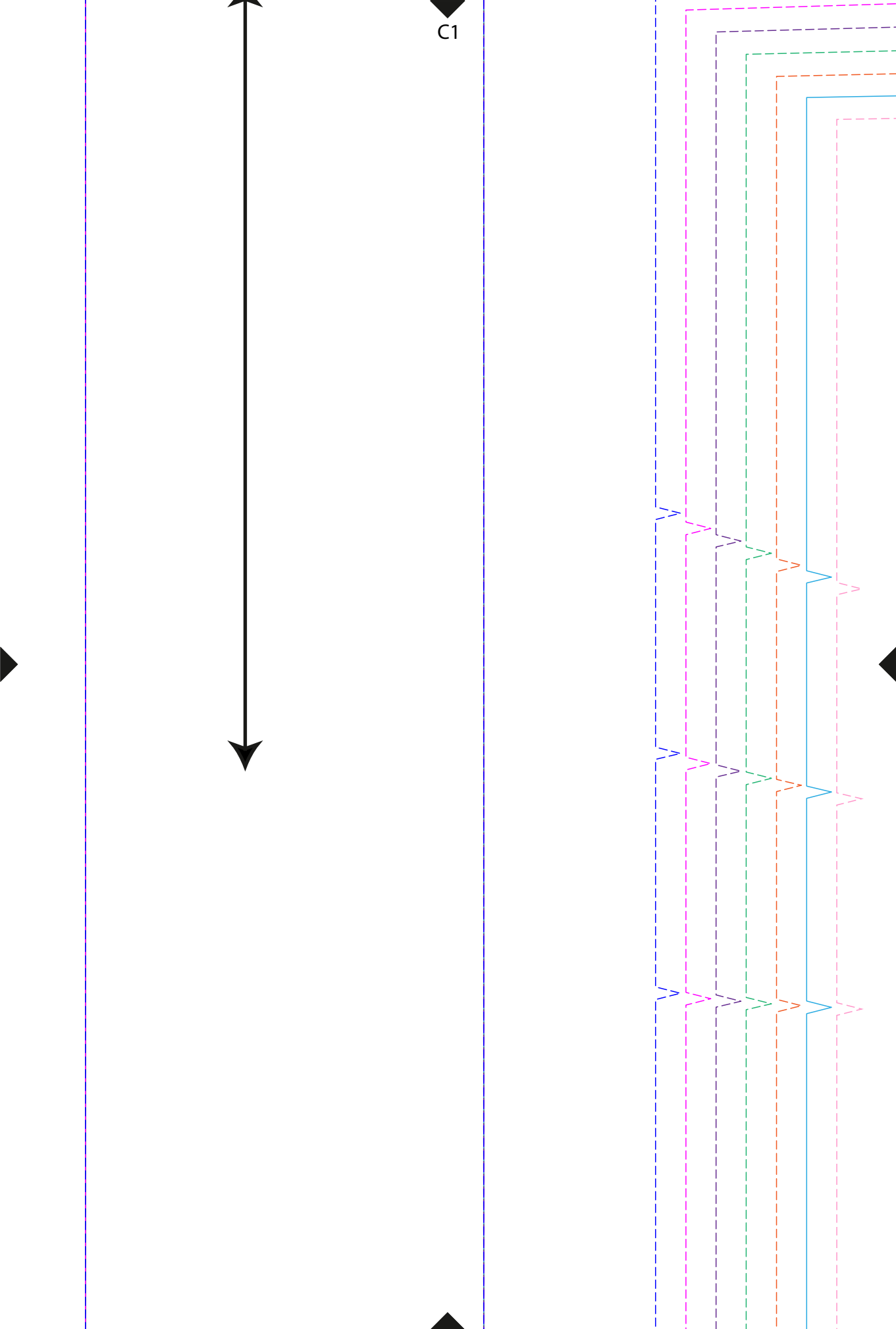




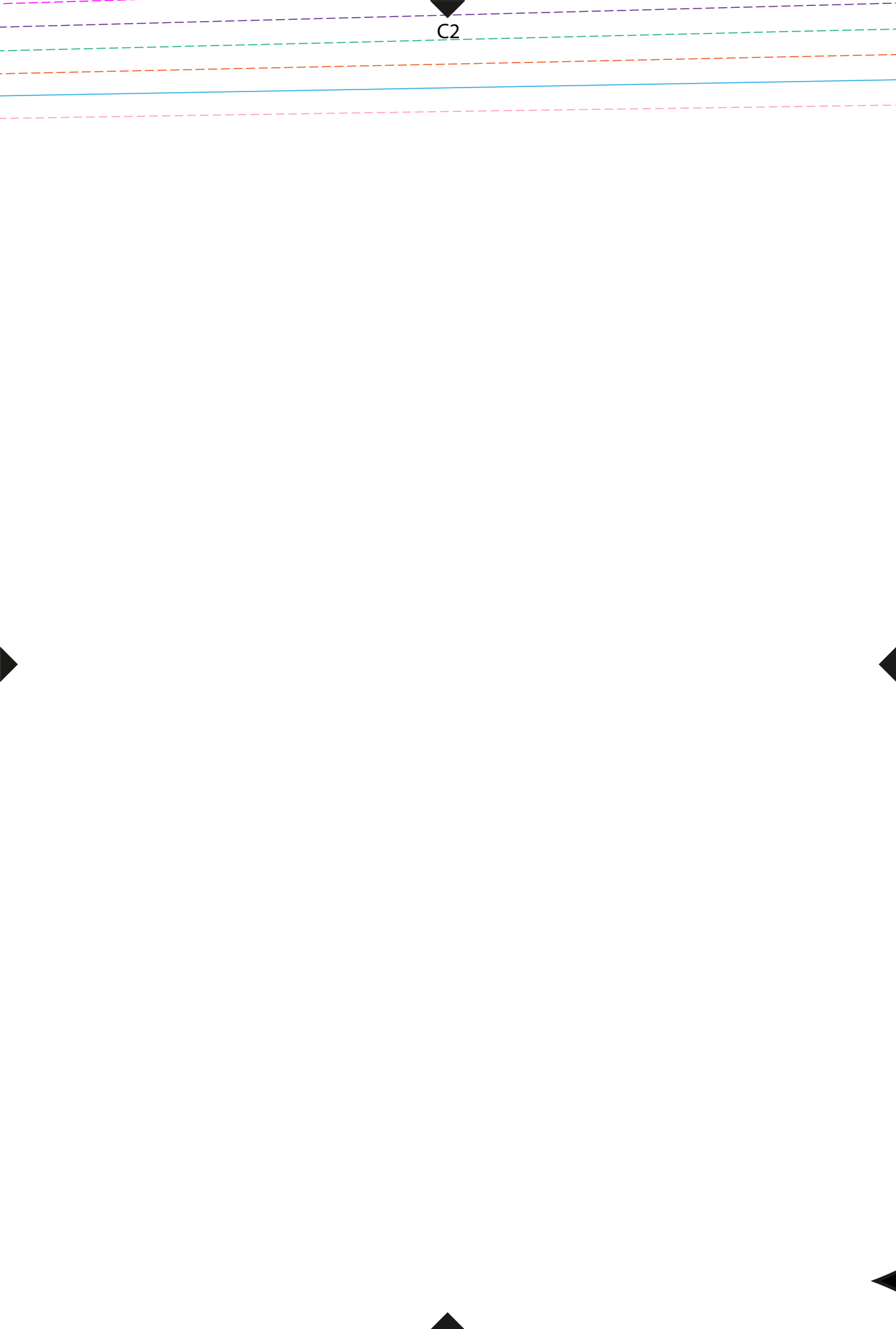


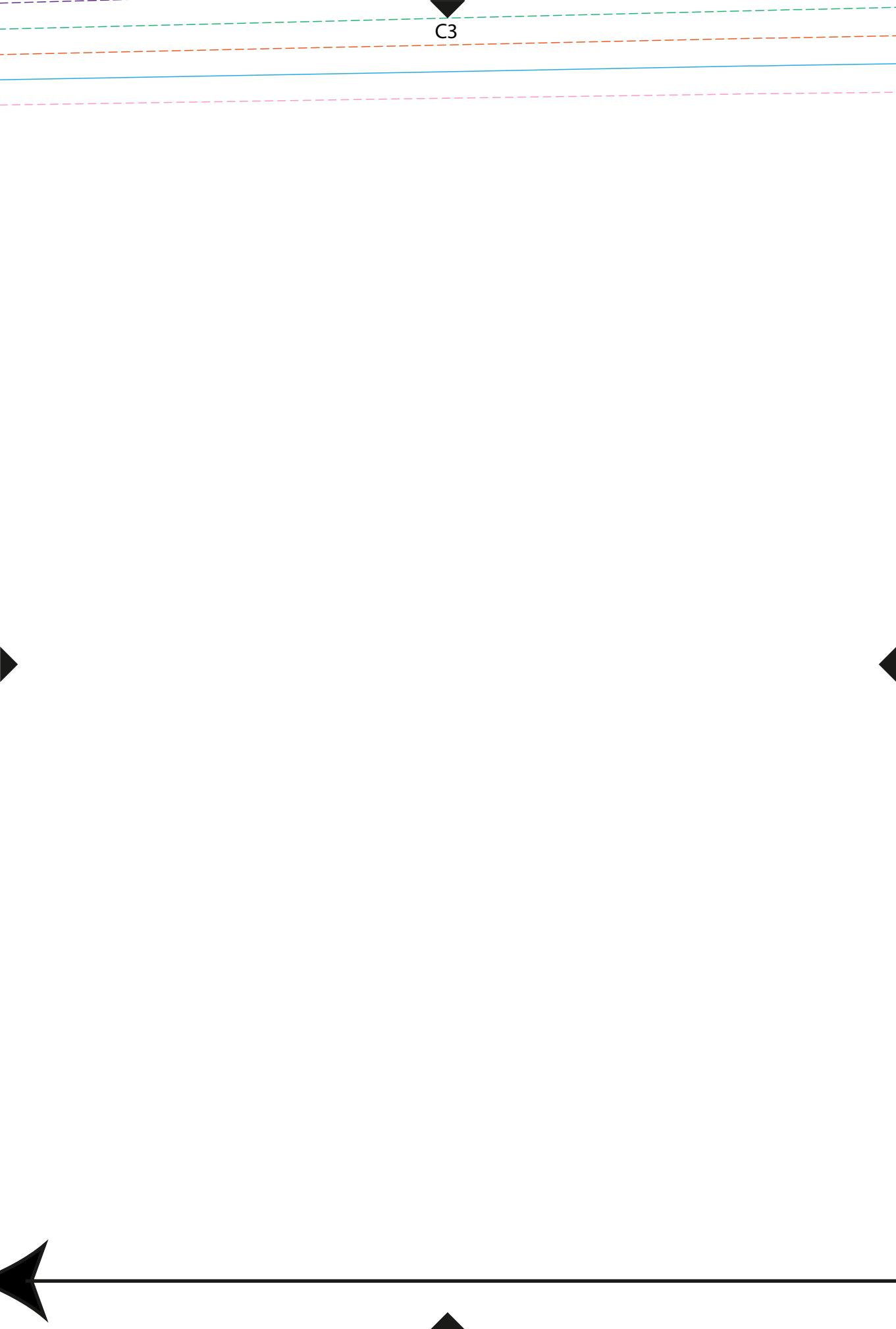
B8





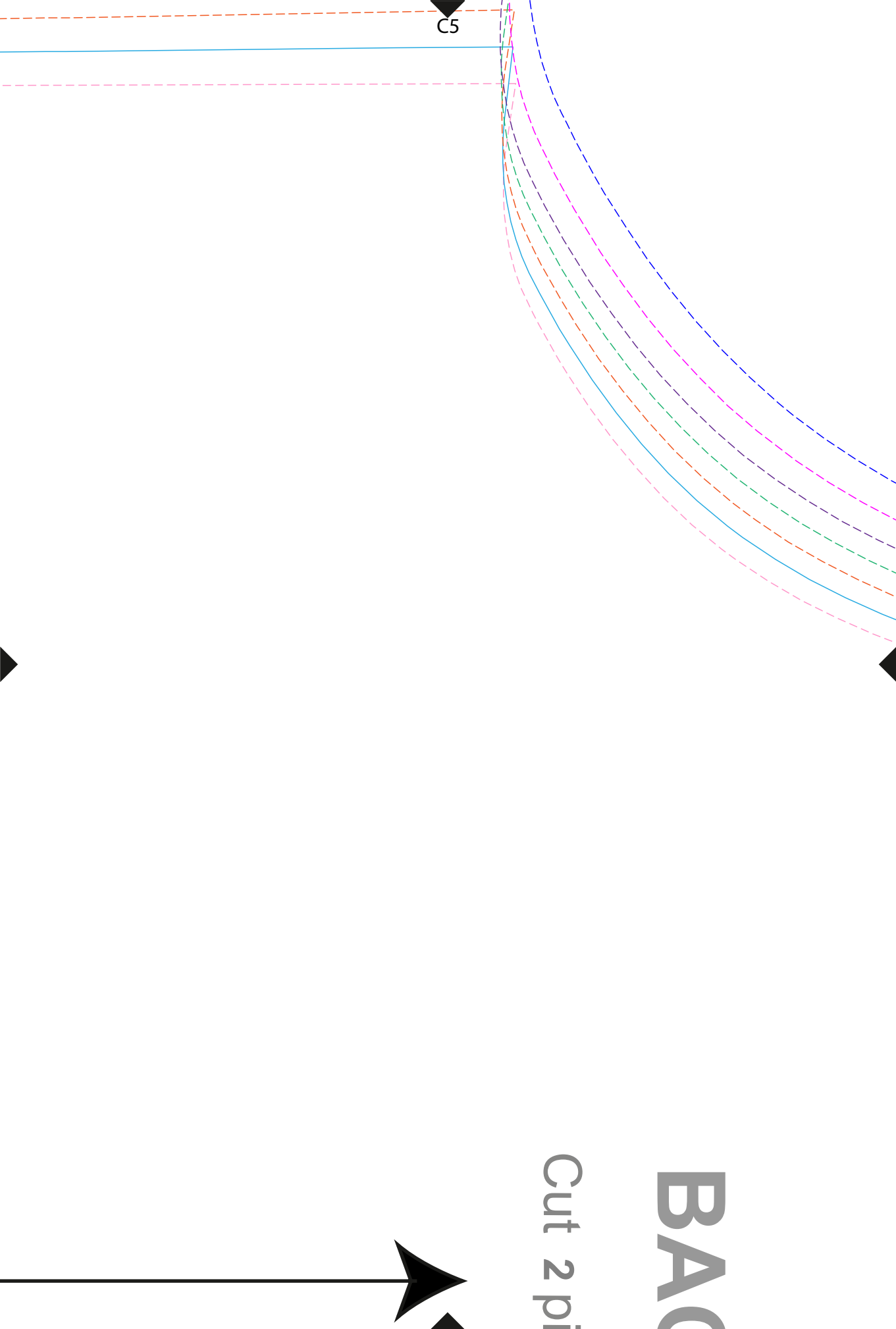
C2

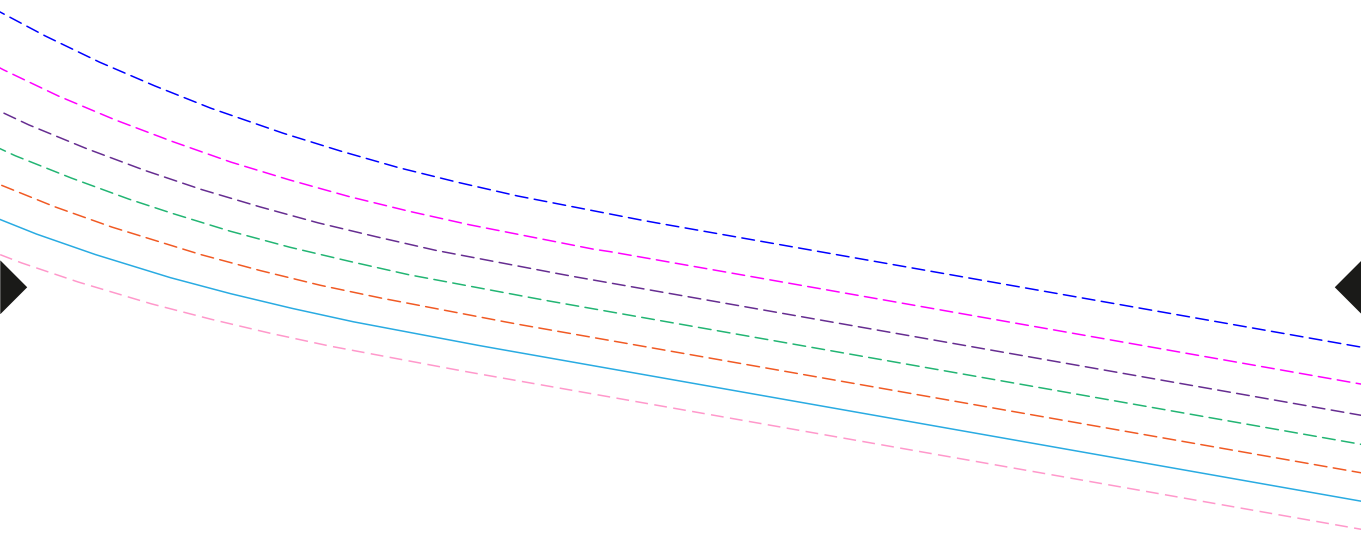


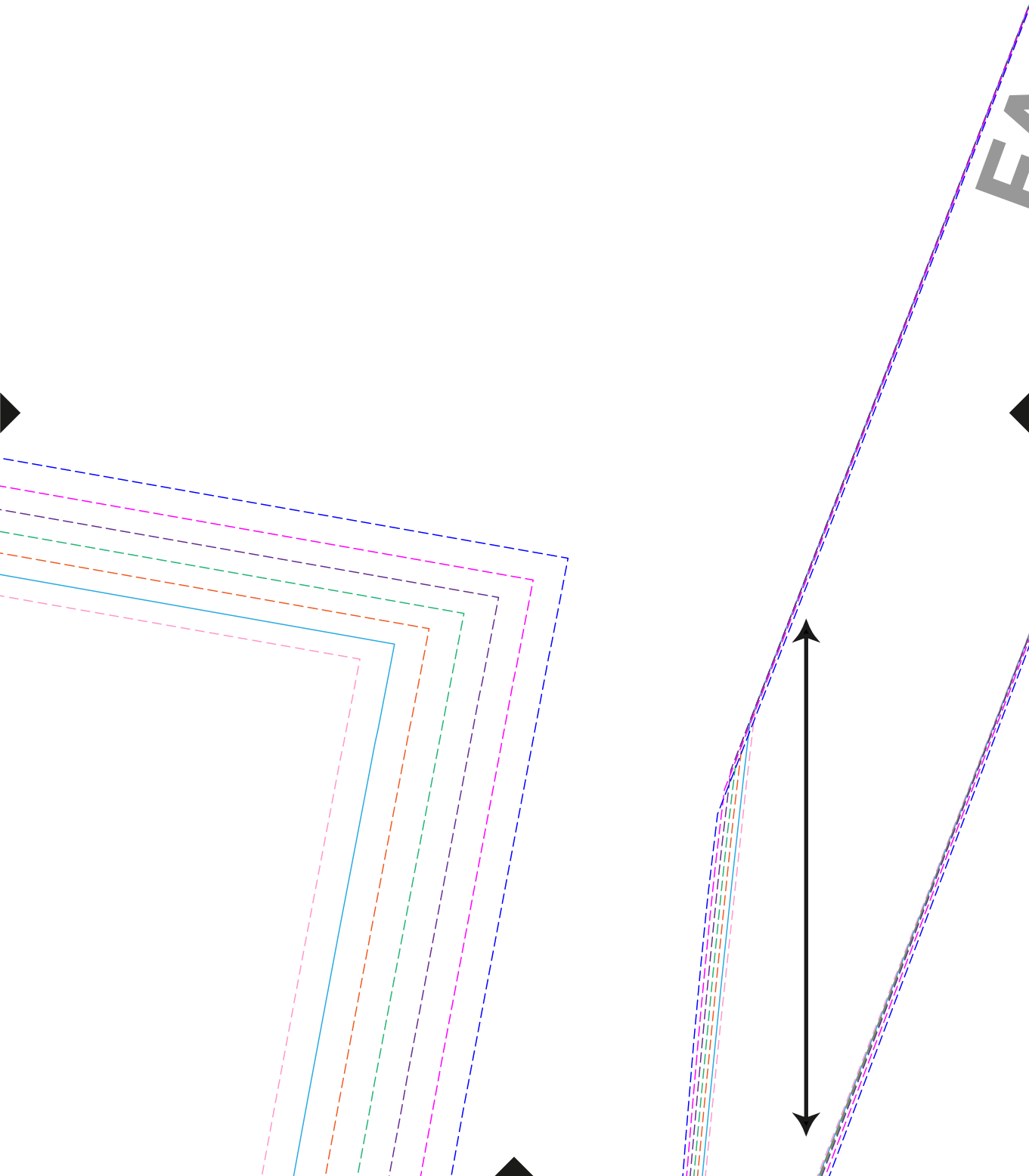


C3

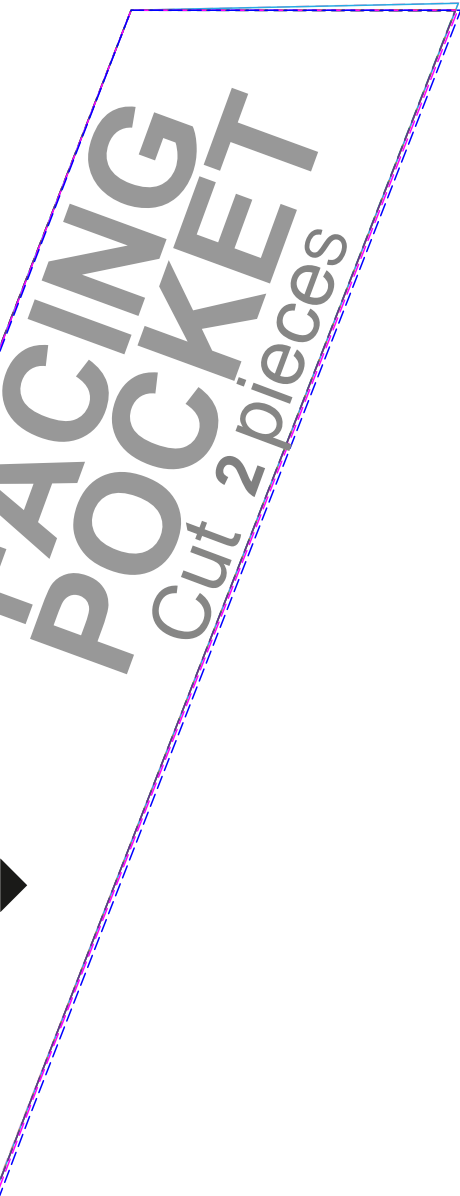
C4



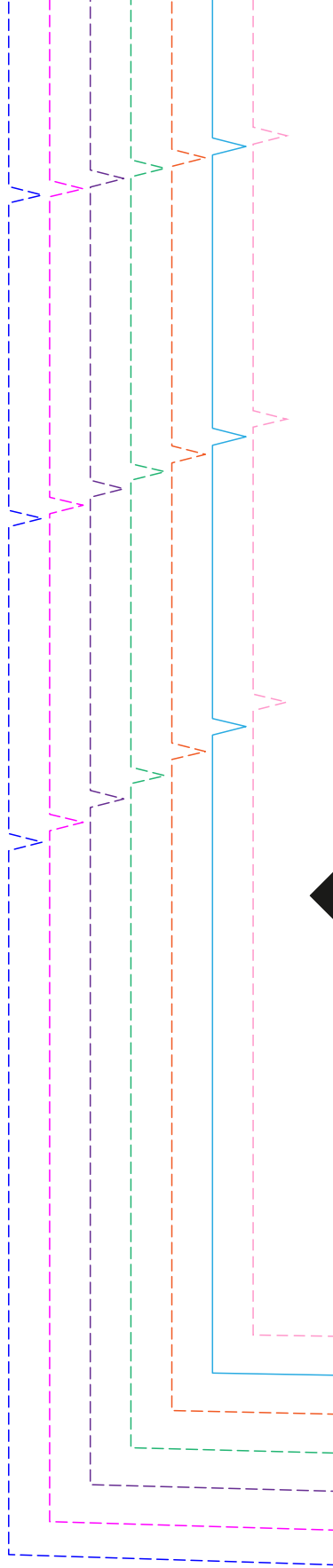
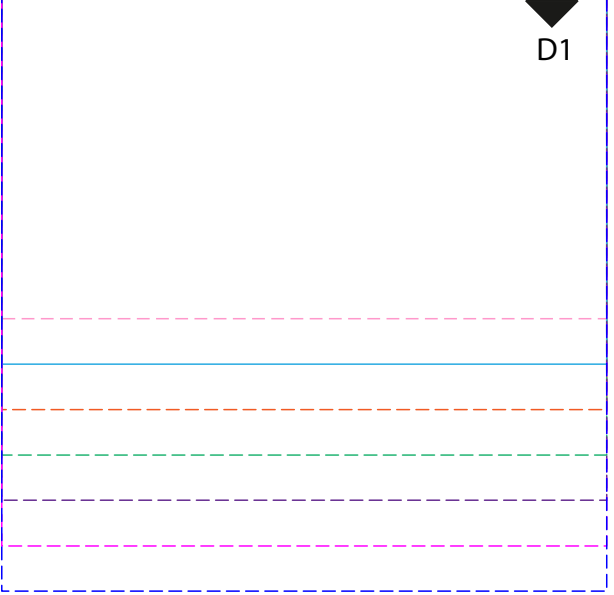


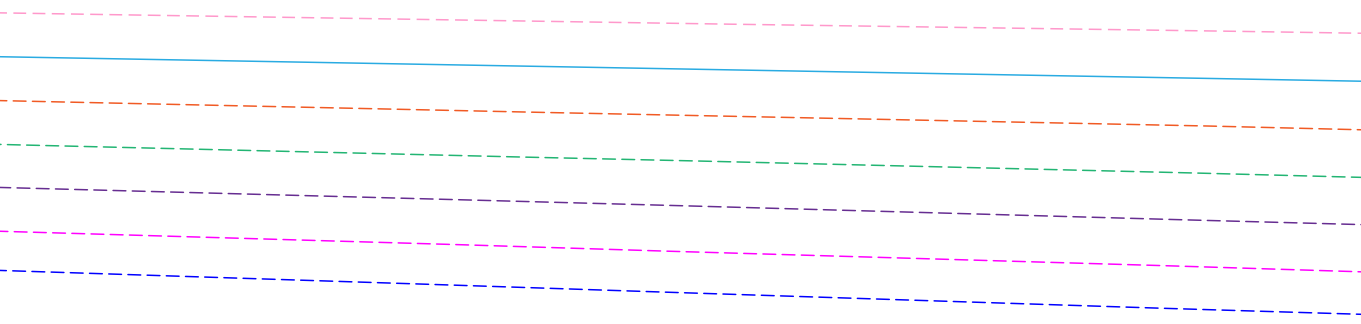


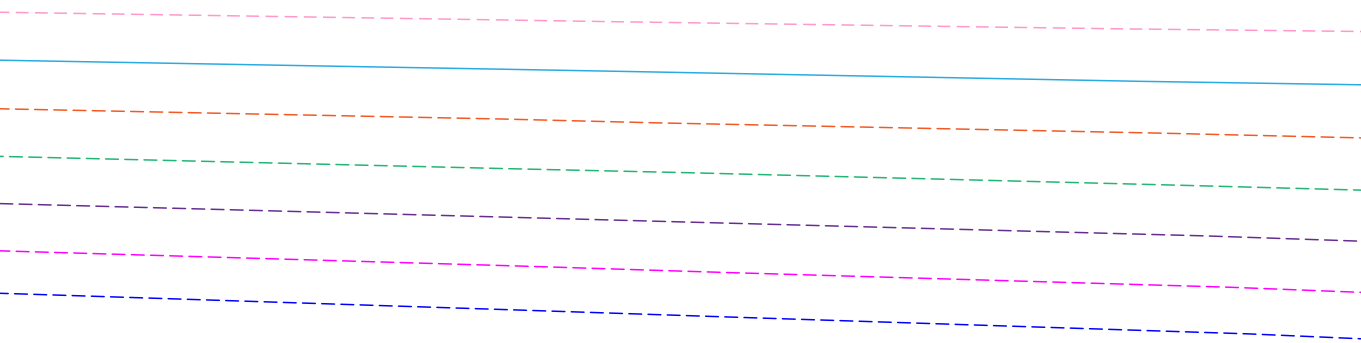
EA

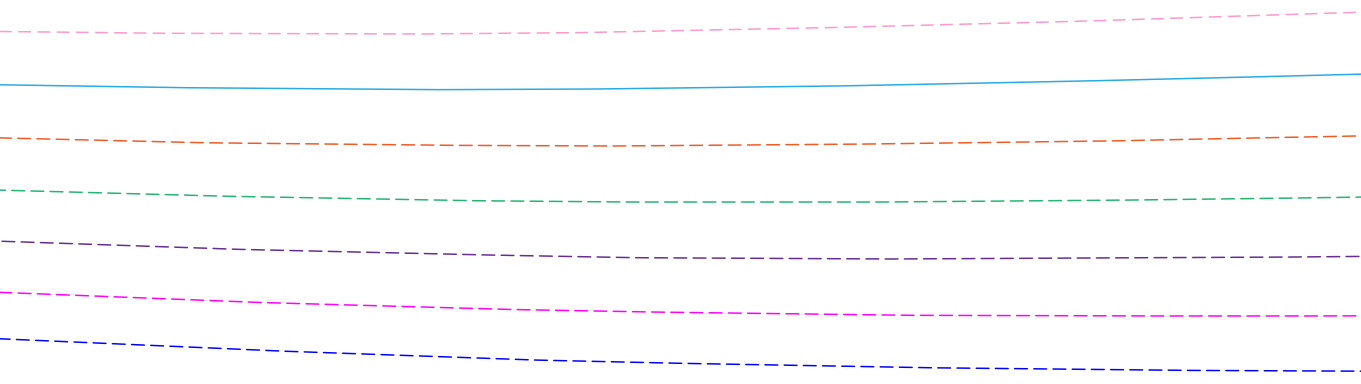


D1





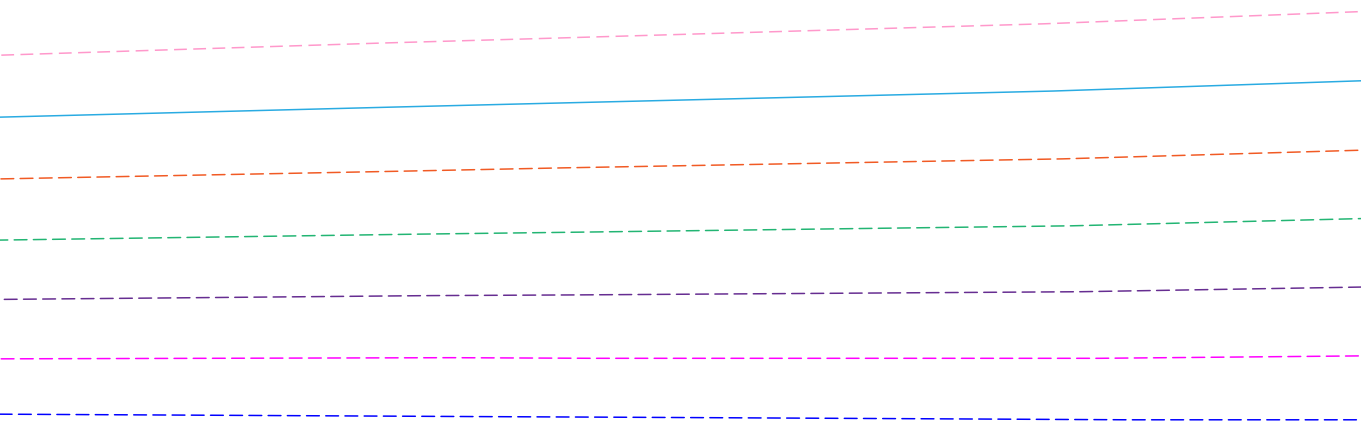


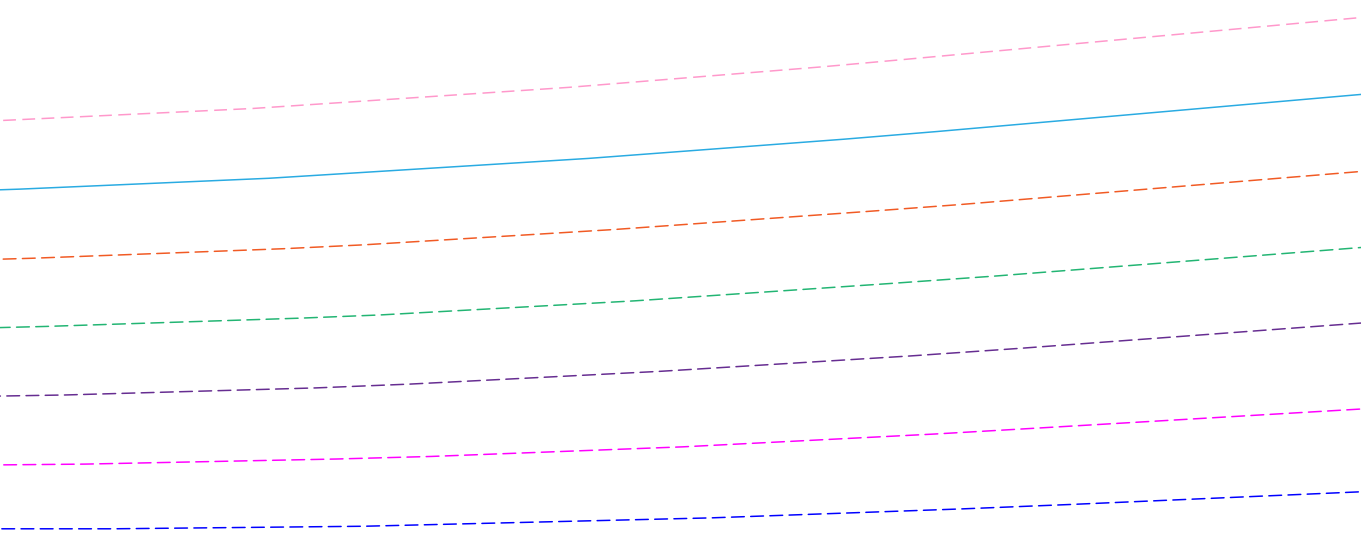


CK

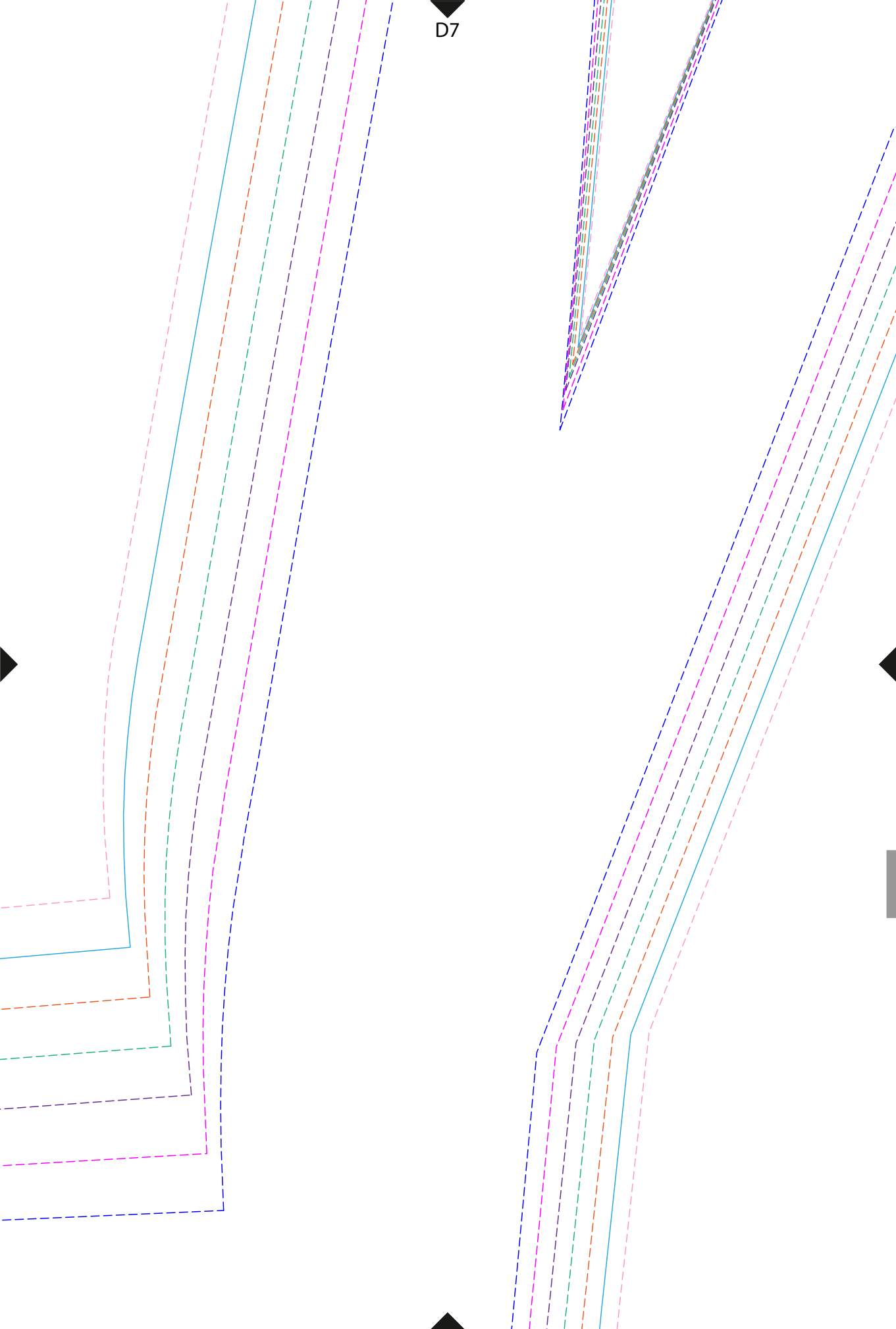
eces

D5

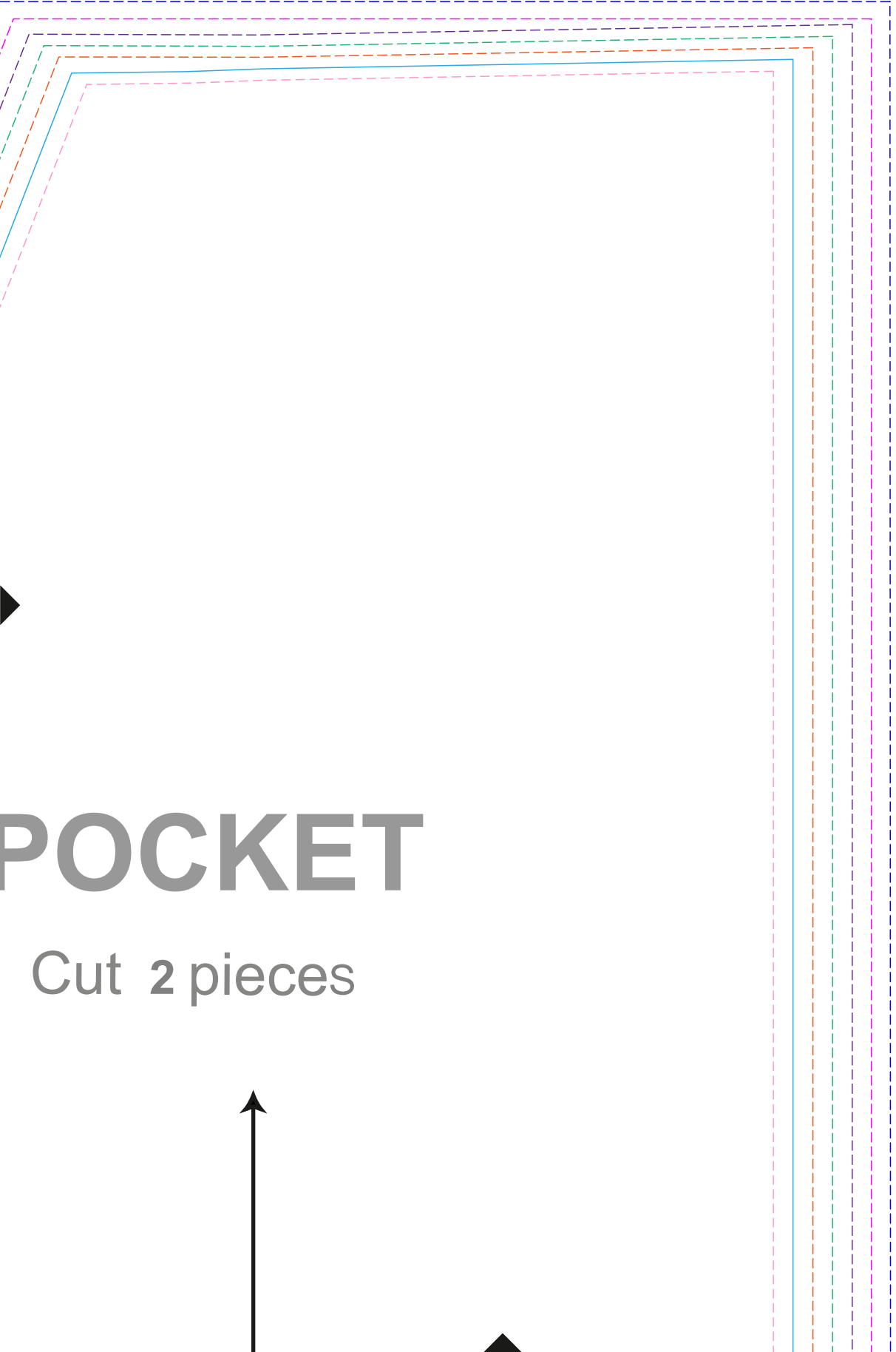




D7



D8



POCKET

Cut 2 pieces



E1

--	--	--	--	--	--



E3



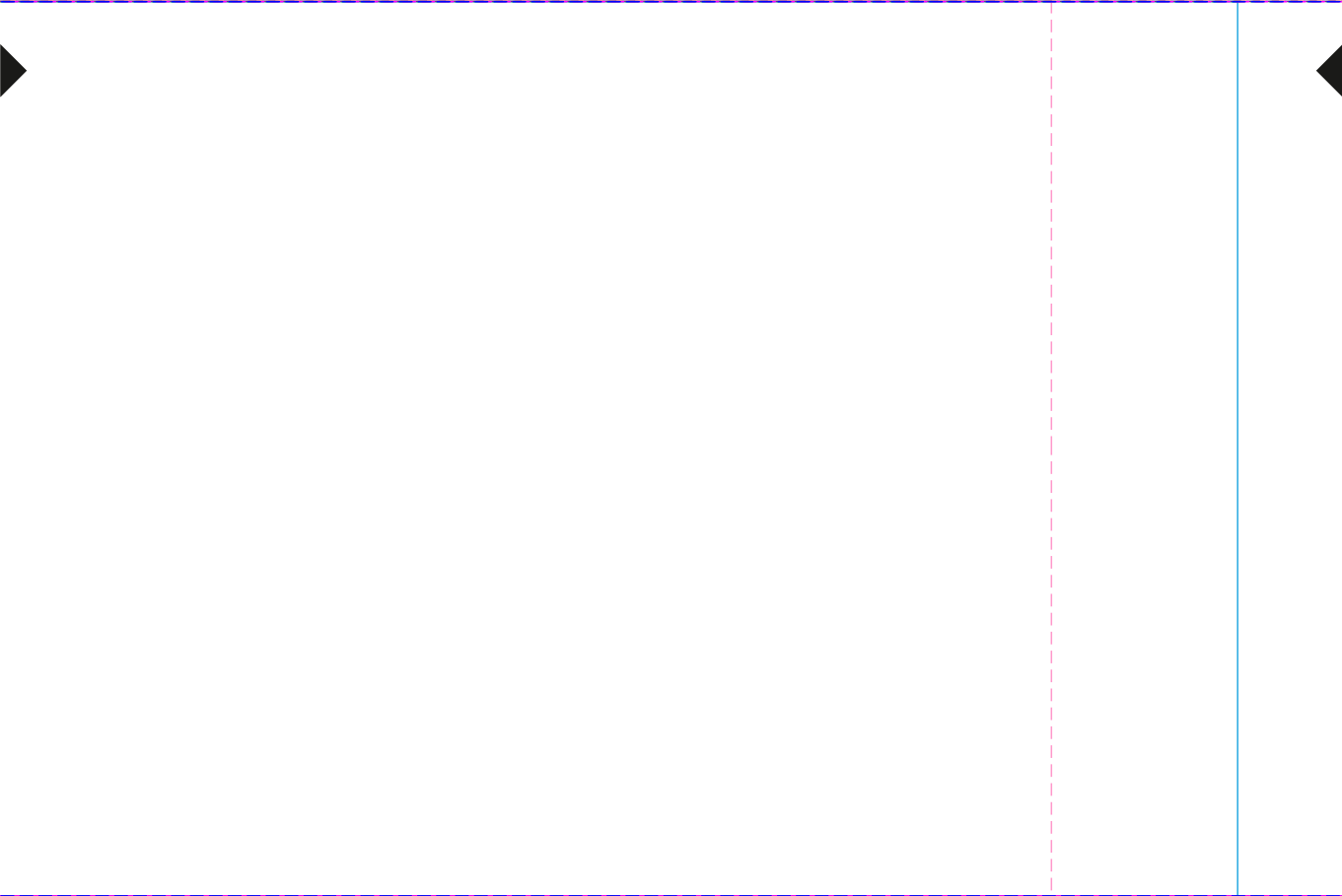
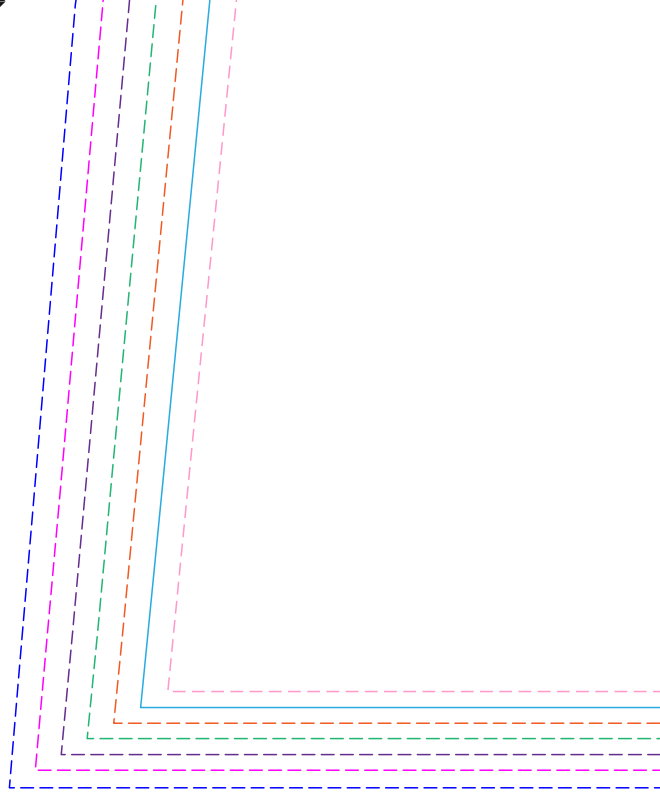
Cut 1 piece

WAISTBAND





E7



E8

