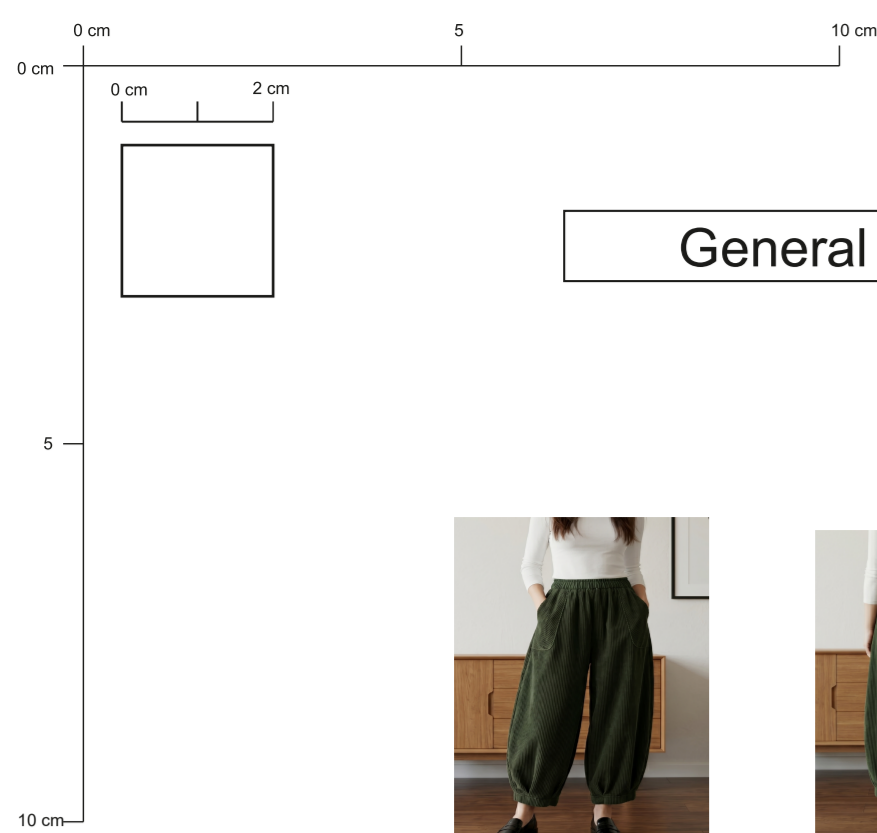


Balloon Pants

Patterns 100% scale to print



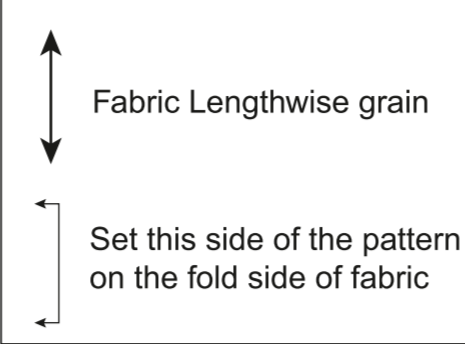
General Information



SIZE KEY	
XS	—
S	—
M	—
L	—
XL	—
XXL	—
XXXL	—

Seam allowance: 1 cm / 0.4 inches

SYMBOLS USED IN THIS PATTERN



You can print this pattern either in color or B&W. Select the size in the size key and follow either the color or the style of line to cut the pattern for your size.

To print separate sizes, show or hide the correspondent layers on your PDF Reader

Assembly the pages matching the registration marks

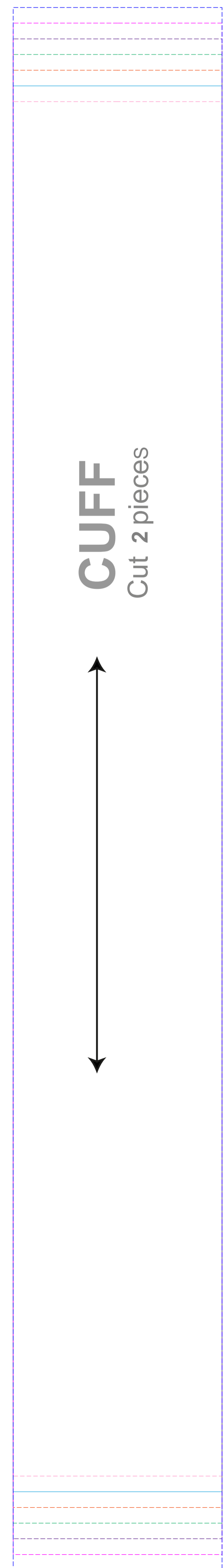
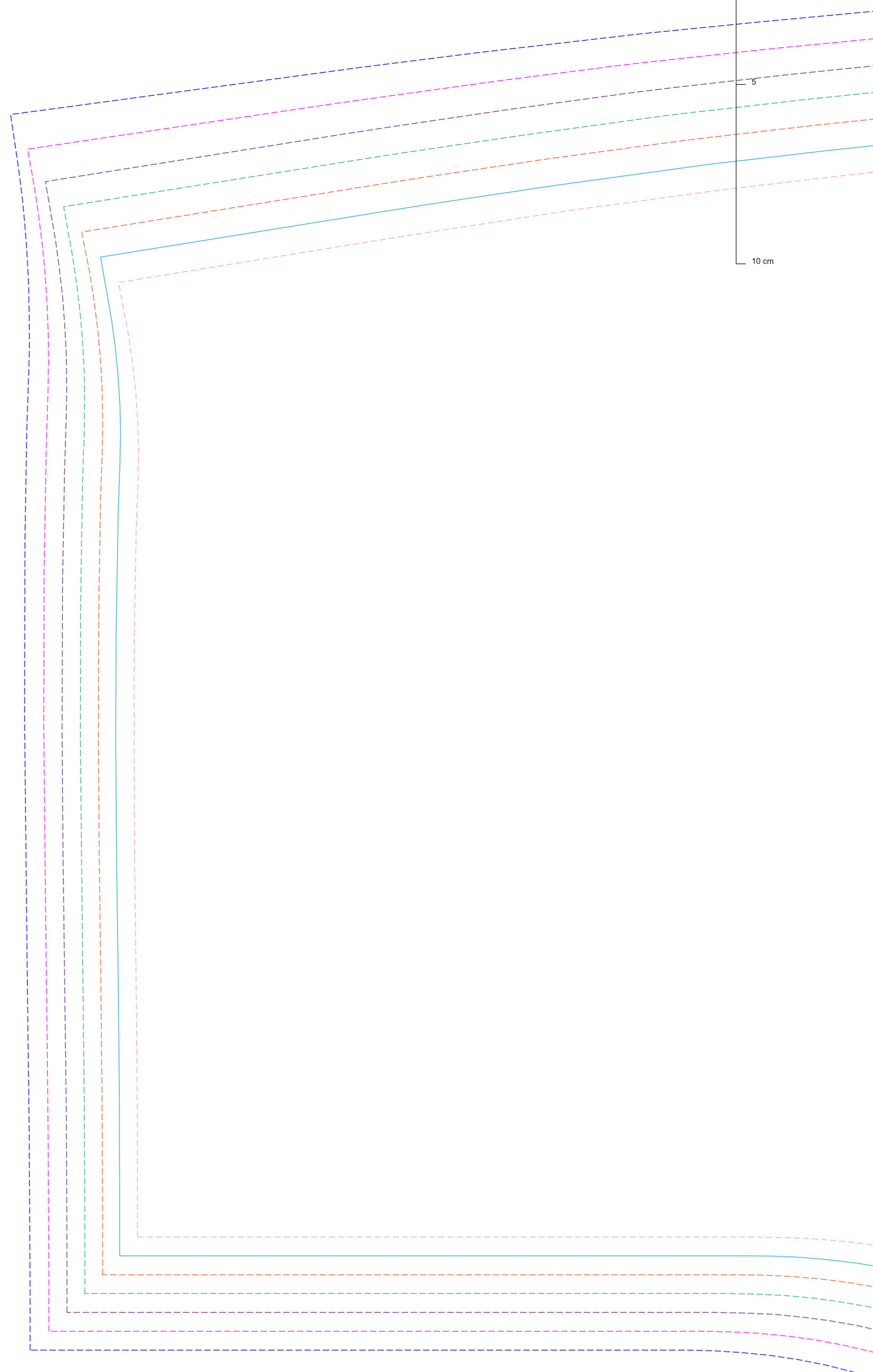
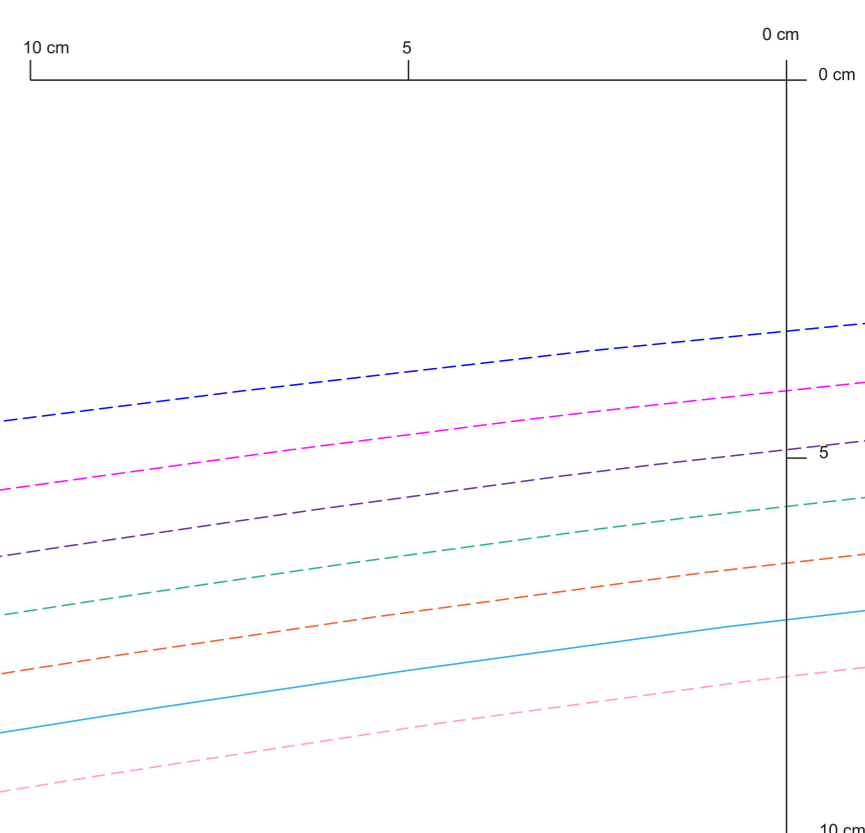


INCHES

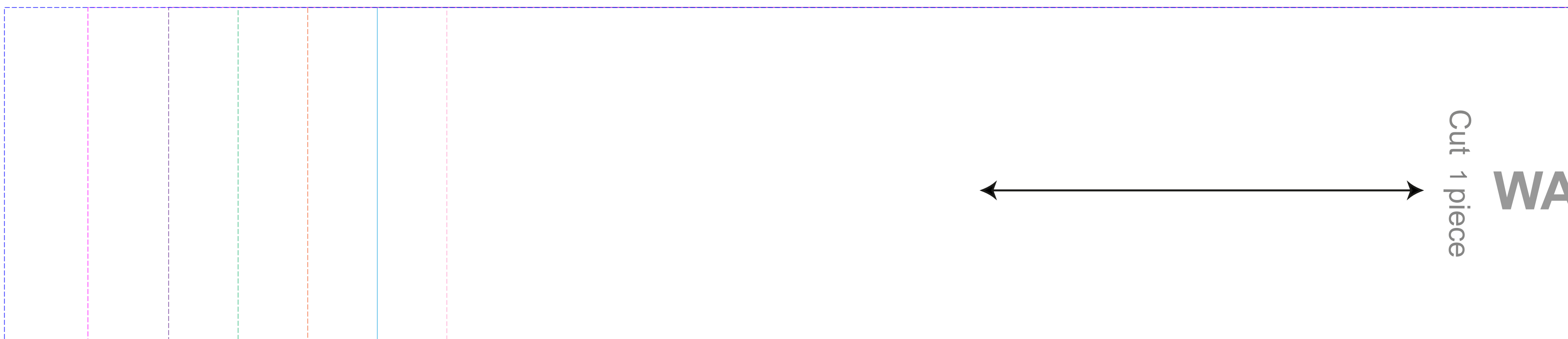
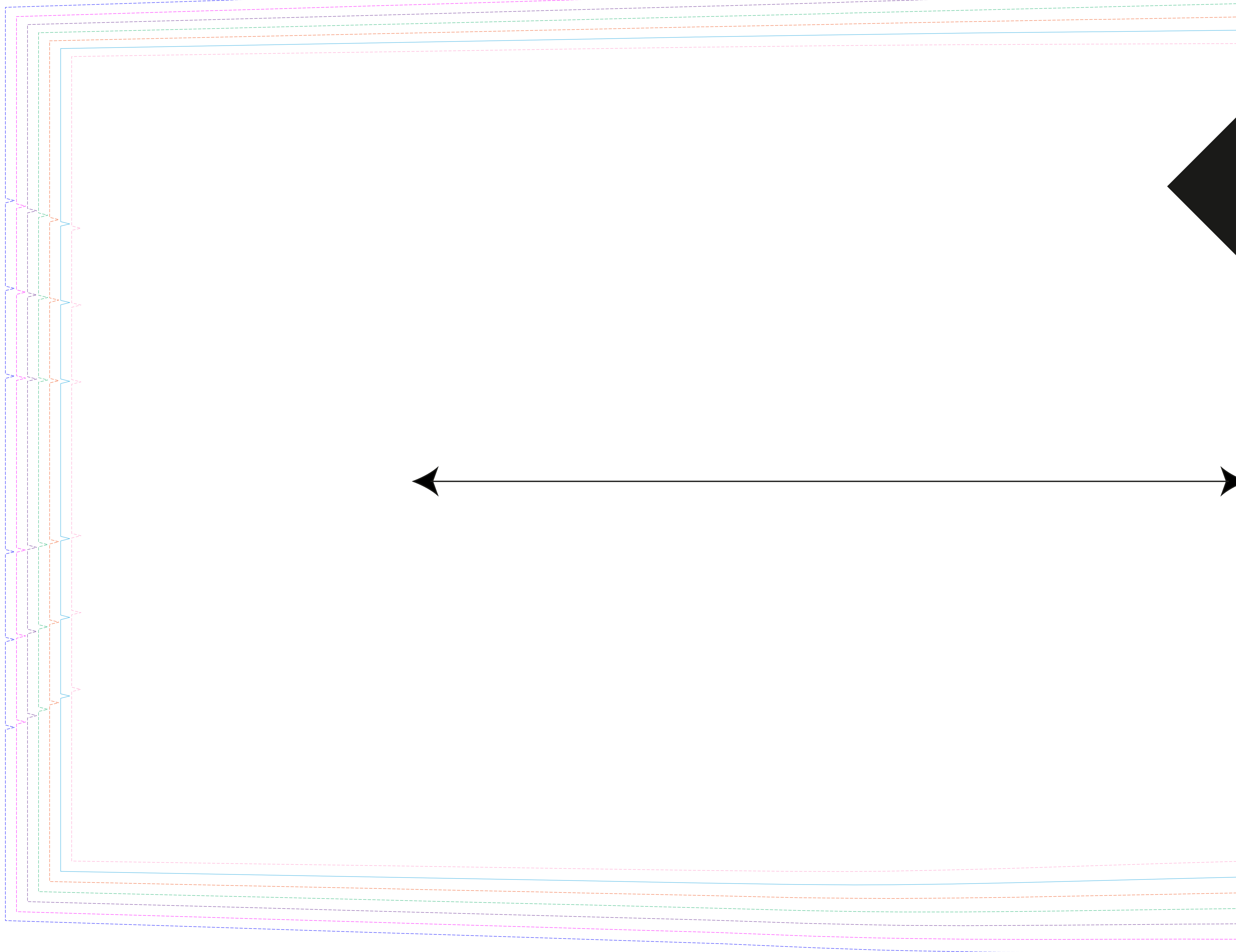
SIZE in	Bust	Waist	Hip
XS	34.3	26.4	36.2
S	36.2	28.3	38.2
M	38.2	30.3	40.2
L	40.2	32.3	42.1
XL	42.1	34.3	44.1
XXL	44.1	36.2	46.1
XXXL	46.1	38.2	48

CENTIMETERS

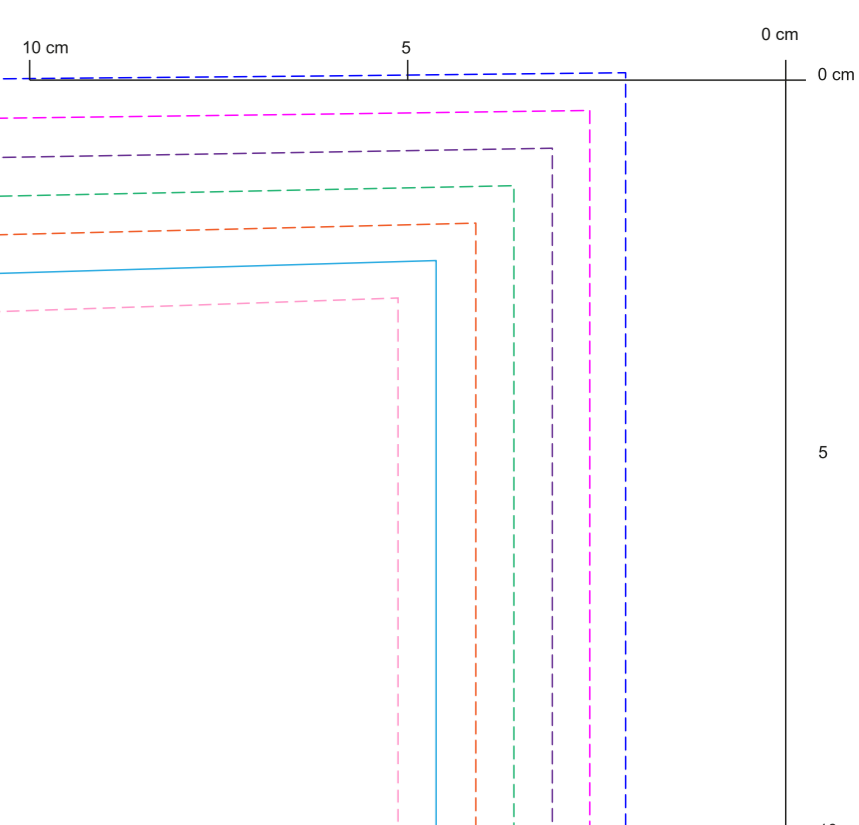
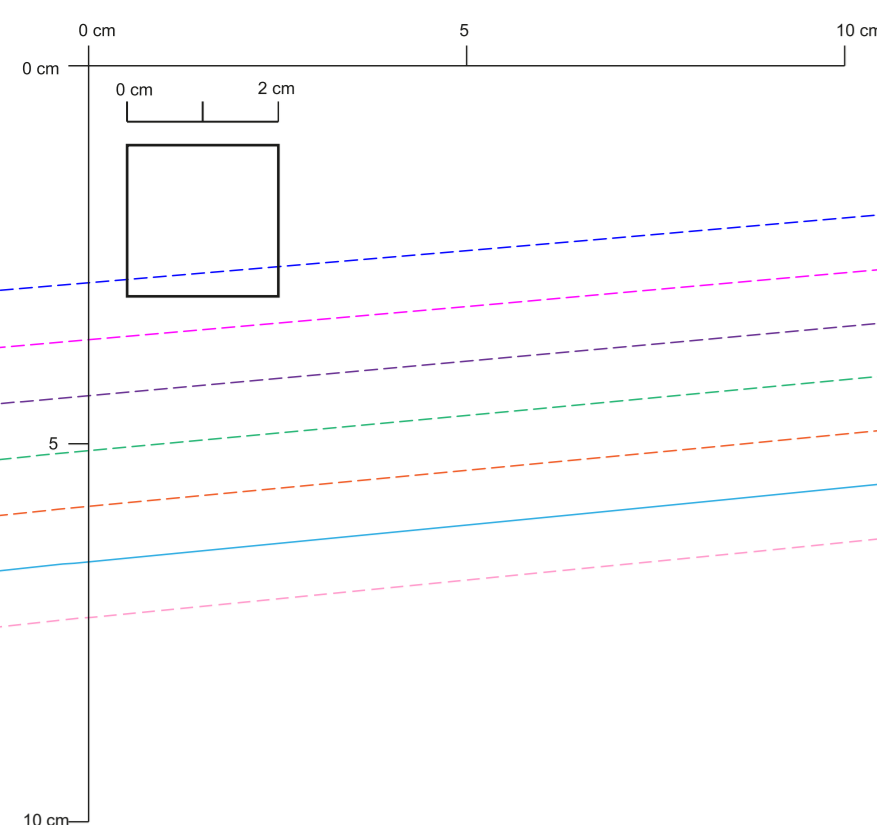
SIZE cm	Bust	Waist	Hip
XS	87	67	92
S	92	72	97
M	97	77	102
L	102	82	107
XL	107	87	112
XXL	112	92	117
XXXL	117	97	122



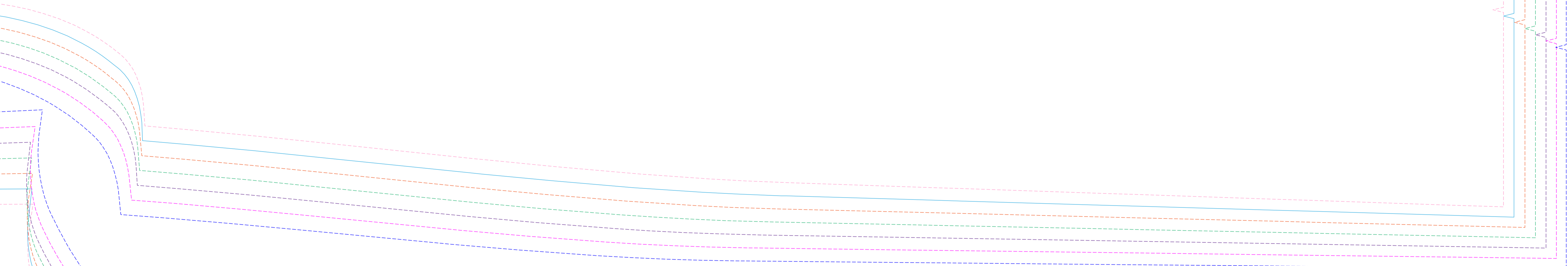
CUFF
Cut 2 pieces



Cut 1 piece **WA**



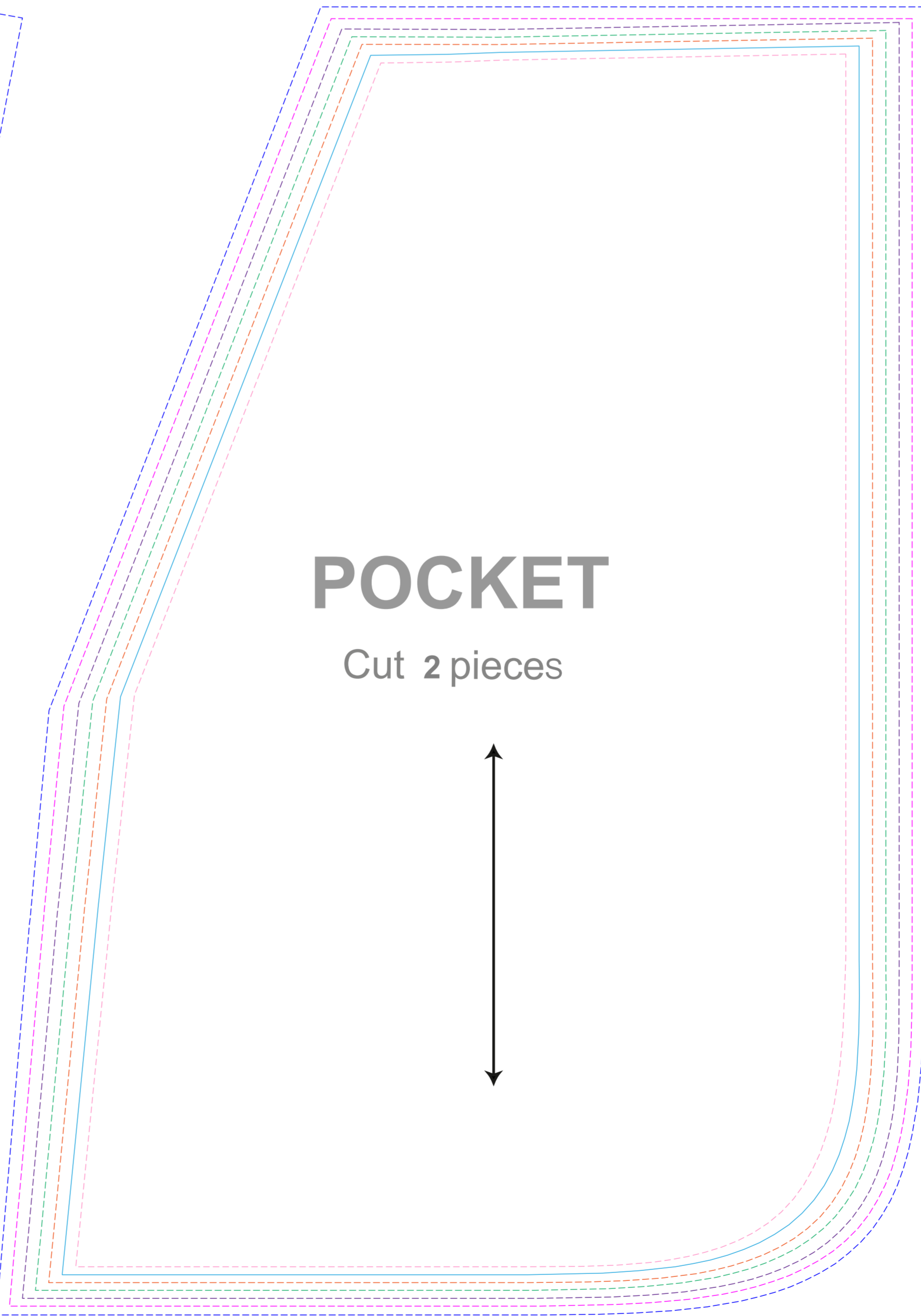
FRONT
Cut 2 pieces



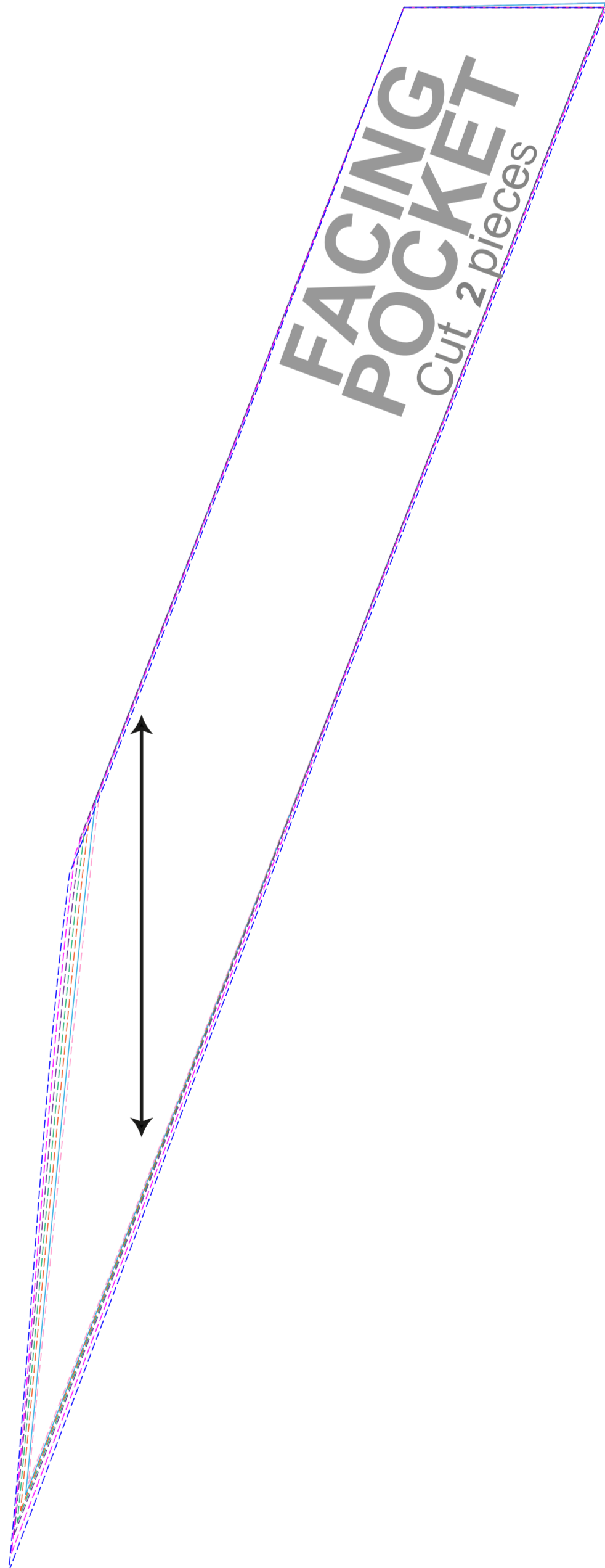
BACK
Cut 2 pieces



POCKET
Cut 2 pieces



FACING POCKET
Cut 2 pieces



WASTEBAND

